

1. General Information

- 1) Name of the Country : Sri Lanka
- 2) Area (in 1,000 sq.km) : 65610 in 2011
- 3) Life expectancy at birth : Total 72.0
Male 68.8 in 2001
Female 77.2 in 2011
- 4) Infant Mortality rate (per 1,000 live births) : 11.8 in 2007
- 5) Maternal mortality rate (per 100,000 population) : 11.9 in 2005
- 6) Literacy rate : 96 in 2011
- 7) Population

Estimated Middle Annual Population – 2012 – By Gender and Districts

District	Male	Female	Total
Colombo	1,321	1,263	2584
Gampaha	1070	1121	2191
Kalutara	566	578	1144
Kandy	706	741	1447
Matale	251	253	504
NuwaraEliya	382	386	768
Galle	533	563	1096
Matara	411	436	847
Hambantota	288	288	576
Jaffna	292	325	617
Killinochchi	81	79	160
Mannar	55	50	105
Vavuniya	86	91	177
Mullativu	70	74	144
Batticaloa	265	285	550
Ampara	321	333	654
Trincomalle	189	191	380
Kurunegala	781	796	1577
Puttalam	392	397	789

Anuradhapura	429	411	840
Polonnaruwa	217	198	415
Badulla	446	451	897
Moneragala	227	218	445
Ratnapura	575	564	1139
Kegalle	403	420	823

**Estimated Middle Annual Population – 2011
By Gender and Age groups**

Age Group	Male	Female	Total
Sri Lanka	10,357	10,512	20,869
0-4	901	873	1774
5-9	932	904	1836
10-14	953	925	1878
15-19	1025	999	2024
20-24	984	978	1962
25-29	808	841	1649
30-34	787	809	1596
35-39	766	788	1554
40-44	715	725	1440
45-49	622	641	1263
50-54	559	578	1137
55-59	394	431	825
60-64	300	315	615
65-69	228	263	491
70-74	176	200	376
75+	207	242	449

8. Education System

Details of schools and students (District vice) – Sri Lanka

District	Year 1- Year 5	Year 1- Year 8	Year 1- Year 11	Year 1- Year 13	Year 6- Year 11	Year 1- Year 13	Total	Students
Colombo	66	05	177	136	03	16	403	358,097
Gampaha	133	06	224	117	08	46	534	339,576

Kalutara	88	13	189	101	01	11	403	206,590
Kandy	136	25	254	188	01	35	639	269,647
Matale	103	08	107	76	-	12	306	94,057
NuwaraEliya	191	39	165	112	2	6	515	156,074
Galle	76	13	191	127	03	15	425	216,753
Matara	59	08	176	91	02	26	362	160,942
Hambantota	56	03	150	78	01	23	311	127,863
Jaffna	146	14	148	66	01	23	398	118,706
Killinochchi	44	33	44	31	-	08	0	52,136
Mannar	23	06	19	20	-	-	68	20,946
Vavuniya	63	08	33	27	-	-	131	37,600
Mullativu	22	-	11	13	-	-	3	32,543
Batticaloa	133	09	113	67	-	03	325	130,596
Ampara	133	16	161	86	-	04	400	155,847
Trincomalle	69	20	97	71	01	02	260	96,552
Kurunegala	181	21	411	237	01	22	873	159,427
Puttalam	36	13	199	87	-	11	346	311,636
Anuradhapura	142	24	251	109	-	16	542	174,034
Polonnaruwa	75	09	87	62	-	01	234	78,737
Badulla	128	44	227	164	-	07	570	183,354
Moneragala	39	20	128	73	-	01	261	96,478
Ratnapura	126	41	280	111	-	20	578	208837
Kegalle	171	14	205	111	03	22	526	157,827

9. Health System

District	Teaching Hospitals	Base Hospitals	District Hospitals	Peripheral Hospitals	Rural Hospitals	Central Dispensaries & Maternity Homes	Other Hospitals	Central Dispensaries	MOH Areas
Colombo	7	2	4	5	1		8	27	13
Gampaha	1	3	6	3	5		6	24	15
Kalutara		3	8	4	5		2	23	11
Kandy	2	2	15	6	26		5	56	21
Matale		2	3	4	12	1	3	25	10
NuwaraEliya		1	15	1	8	3		28	7
Galle	2	1	8	8	5	3	4	31	17
Matara		1	4	4	6	2	1	19	15
Hambantota		3	4	4	7	4		23	11
Jaffna	1	1	6	6	3	8	3	28	11

Killinochchi			5			3		9	4
Mannar		1	3	1	1	2		8	4
Vavuniya			1	1		5		8	4
Mullativu			1	1	1	3		6	2
Batticaloa	1	2	5	1	4	3	2	18	11
Ampara		1	1	1	3	3	1	11	7
Trincomalle		2	9	7	5	8	2	37	24
Kurunegala	1	2	16	12	15	1		47	18
Puttalam		2	4	3	5	6	1	22	9
Anuradhapur a		2	5	7	23		1	39	19
Polonnaruwa		1	1	4	4			11	8
Badulla		2	13	1	16	1	1	35	15
Moneragala		1	9	1	7		1	19	10
Ratnapura		3	10	9	11			34	15
Kegalle	1	3	5	1	9	3	5	27	10
	16	44	161	95	182	59	46	615	291

10. Major Industry (Number of people working for each industry)

Employment statistics by Gender – 2010

	Sri Lanka	Male	Female
Labour Force	8107739	531753	2790186
Employed population	7706593	5131986	2574608
Employment rate	95.1	96.5	92.3

11. Employment rate

Percentage of employed population by major industry group

District	Total	Agri.	Ind.	Serv.
Colombo	100.0	3.6	28.6	67.8
Gampaha		6.6	37.8	55.6
Kalutara		17.5	32.2	50.3
Kandy		23.1	22.2	54.7
Matale		46.5	19.6	33.9
NuwaraEliya		68.2	8.4	23.4
Galle		33.3	27.4	39.3
Matara		36.9	24.8	38.3
Hambantota		43.6	23.3	33.2

Batticaloa		27.5	22.1	50.3
Ampara		39.2	20.0	40.8
Trincomalle		37.5	12.5	50.0
Kurunegala		38.5	23.2	38.3
Puttalam		33.3	31.3	35.4
Anuradhapura		64.2	9.8	26.0
Polonnaruwa		47.4	17.4	35.2
Badulla		61.6	11.0	27.4
Moneragala		55.0	11.6	33.4
Ratnapura		47.0	23.6	29.4
Kegalle		32.6	27.9	39.5

2. Intellectual Disabilities

1) Laws concerned with persons with Intellectual Disabilities

PWDs.

- Constitution of the Democratic Socialist Republic of Sri Lanka – 1978
- Act No. 28 of 1996 – Protection of the Rights of Persons with Disabilities Act
- Act No. 33 of 2003-Amended Act of Protection of the Rights of Persons with Disabilities
- National Policy on Disability for Sri Lanka – 2003
- Public Admin. Circular – No.27 of 1998 - 3 % of job opportunities for Persons with Disabilities
- Act No. 9 of 1992- National transport for the visually impaired persons
- Accessibility Regulations of No. 1 of 2006 – Gazette Notification dated 17/10/2006
- Legal Aid Commission

Children

- UNCRPWD – United Nations Convention on Rights of Persons with Disabilities signed on 30/03/2007
- Children and Young Persons Ordinance Act No.48 of 1939 (1956 Revision) Children in need of care and protection, children in conflict with the law
- Employment of women, young persons and children Act No.47 of 1956, Amendment No. 24 of 2006
- Orphanages Ordinance Act No. 22 of 1941 (1956 Revision)

- Adoption of children’s Ordinance – Act No. 24 of 1941 (1956 Revision) Act No. 15 of 1992 (Amendment)
- Probation of offenders Ordinance – Act No. 42 of 1944 (Rehabilitation of juvenile and young offenders in keeping with them of their own society)
- Youthful offenders (Training schools) Ordinance Act No. 28 of 1939 (1956 Revision)
- Tsunami Special Arrangements Act No.16 of 2005

Elders

- Protection of the Rights of Elders – Act No. 09 of 2000
- Gazette Notification of 21st September 1947-the Department of Social Services was established on 1st February 1948

Women & Others

- Prevention of Domestic Violence Act No. 34 of 2005
- Social Security Board Act No. 17 of 1996
- National Counseling services Council Bill (to be enacted) 2005
- Convention of prevention and combating trafficking in women and children from prostitution Act No. 30 of 2005
- Employment of women, young persons and children Act No. 8 of 2003

2) Financial Assistance for persons with Intellectual Disabilities

- ❖ Provide livelihood support for PwDs.
- ❖ Provide assistance for housing for PwDS
- ❖ Provide medical support
- ❖ Provide assistive devices

3) Services including CBR available for persons with Intellectual Disabilities

List of services provided by Government, NGOs, private sector, family groups and other humanitarian agencies for Persons with physical disabilities, intellectual disabilities, and Persons with mental disorders

- ❖ Providing Rs 3000/ per month
- ❖ Providing Rs 10000/ for self-employment

- ❖ Providing Rs 25000/ for health facilities
- ❖ Providing Assistive devices
- ❖ providing Rs 150000/ for housing
- ❖ Conducting Homes for the PwDs

4) Number of services and those beneficiaries in each district (province)

	Province	Vocational training		Pre schools and schools		Day care centres		Homes	
		No.of centers	No.of Persons	No.of centers	No.of Persons	No.of centers	No.of Persons	No.of centers	No.of Persons
01	Western	16	182	12	148	22	428	08	114
02	Sabaragamuwa	02	30	02	50	-	-	02	140
03	Central	04	00	-	-	-	-	04	150
04	Uva	01	50	-	-	-	-	01	50
05	North Central	-	-	01	35	-	-	04	82
06	Eastern	-	-	03	24	-	-	04	84
07	Northern								
08	North Western	15	90	18	240	-	-	05	30
09	Southern	03	115	04	320	01	20	-	-
	Total	41	467	40	817	23	448	28	550

3. Outline of your organization –

Background, Vision, Strategy

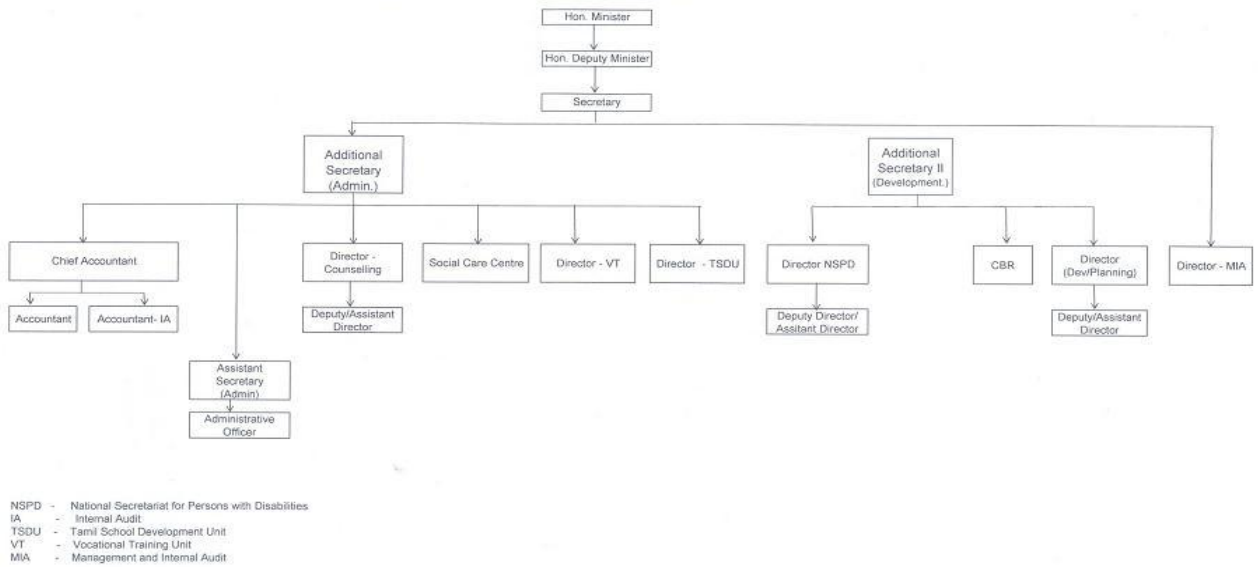
The Ministry of Social services is functioning at the national level which is responsible for policy making, directive and guidance, coordination of social welfare programmes, providing social welfare assistance and conducting researches and also responsible for all the welfare development activities.

At provincial level, Provincial Councils are responsible for social welfare development activities in their respective provinces.

At the district level, the govt. Agent is responsible for implementing, regulating and monitoring of social welfare system.

At the divisional level, Divisional Secretaries are responsible for implementing all social welfare activities in their respective divisions.

Organization Chart of Ministry of Social Services



Vision & Mission of the Ministry

Vision: Advance the Social Well-being of all Sri Lankans to foster a caring and right based society.

Mission: To make the Disadvantaged, partners in national development by providing conducive environment and opportunities through policy initiatives and leadership in Social Welfare & Social Development

2) Major Programmes

- Community Based Rehabilitation
- Vocational training
- Child guidance center
- Sisunena Pubuduwa Programme
- Counselling
- Single parents programme
- Elders committees
- National Institute of Social Development
- Life Assistance

Covered areas - Island-wide

Covered population – Total population in the country

No. of beneficiaries - 75% of the population - viz. PwDs, Elders, Single parent families, children, prisoner's families and persons with psycho-social problems

3) Your position and Duty –

National Coordinating officer - Community Based Rehabilitation National programme

- Preparation of the annual Action Plan, monthly and annual Evaluation Reports
- Coordination of CBR training programmes and activities
- Conducting training programmes for officers and volunteers
- Working as a national resource person
- Evaluation of CBR programmes

4. Community development programme which include Intellectual Disability issues as one of the activities (if you know any)

Formation and empowerment of parental organizations which consist of parents of children with disabilities is done under the CBR programme. Knowledge on training of children with disabilities is given to these parents under the CBR programme. Education for All and Vocational training for children over 18 years are given and those who complete the vocational training courses, are awarded with tool kits enabling them to start self employment. They are assisted with financial facilities to commence self employment. Action has been taken to educate children with intellectual disabilities under 5 years, but there are no sufficient Child Guidance centers. Short term training for Child Guidance teachers is given on how to deal with such ID children. Inclusive education has been identified as a very popular and successful method of learning for children with ID

5. Situation of Persons with Intellectual Disabilities

- 1) **Diagnosis** - The primary institution for the health services is the unit of medical officer of health. Deputy Director of health also works there. There are Family Health Nurses working under the Divisional Director/Health Services where Health clinics are conducted in most units. Early identification and medication of children with disabilities is done in this Unit. After identification of a certain ID, the children are referred to District Hospitals where DMO is housed. They also work for PwDs and special cases are referred to teaching hospitals where more facilities and specialist's services can be obtained.

2) **Education**

There are special education units in some schools. Specially trained teachers and more facilities are available in these units. The new education policy in Sri Lanka is inclusive education. Children with disabilities and normal children learn together in the same classroom. This method is implementing successfully.

3) **Vocational training –**

There are 3 vocational training institutes under the purview of Ministry of Social Services where children with ID, over 18 years can get vocational training. Also there are about 8 vocational training centers run by NGOs with assistance from the Department of Social Services.

In vocational training institutes located in Seeduwa, Amunukumbura and Thelambuyaya, there are courses for 1 year and two years for ID children. Training on Agriculture, food processing and handicrafts are conducted and toolkits are supplied for children with IDs to commence self employment.

4) **Support organizations**

a) Government agencies

- Ministry of Education
- Ministry of Health
- Ministry of Labour
- Ministry of Vocational training
- Ministry of Local Government
- Chamber of Commerce

b) Number of organizations concerned with persons with intellectual disabilities less than 5 organizations

6. Based on the information above, what are the issues to solve to conduct effective support for persons with intellectual disabilities –

- Lack of technical knowledge
- Negative attitudes
- Lack of understanding
- Lack of funds
- Poverty
- Inadequate private sector involvement

**Intellectual Disability
in
Community Activities - 2012**

Inception Report

M.R.Shantha Kumara
Ministry of Social Services
Sri Lanka