

**Social and Economic Inclusion Ministry**

# **Intellectual Disabilities in Community**

**Ecuador**

**Marcia Guerra**



**13**

**Content**

1. General Information.....	2
2. Intellectual Disabilities.....	5
3. Outline of your organization .....	6
4. Community Development program.....	8
5. Situation of Persons with Intellectual Disabilities .....	8
6. Based on the information above, what are the issues to solve to conduct effective supports for persons with Intellectual Disabilities? .....	9

## 1. General Information

- 1) Name of Country: Republic of Ecuador
- 2) Area: 283.561 Km<sup>2</sup>
- 3) Life Expectancy: 75 years old (2010)
- 4) Infant mortality rate: 11,0 deceased/1.000 hab.
- 5) Maternal Mortality rate: 69,7 deceased/100.000 hab.
- 6) Literacy rate: 9,52 years (In average)
- 7) Population broken down by district, age (10 years), income level (rich, middle, poor, poorest)

Population by district (Province)		
#	Province	Habitants
1	Azuay	712.127
2	Bolívar	183.641
3	Cañar	225.184
4	Carchi	164.524
5	Chimborazo	458.581
6	Cotopaxi	409.205
7	El Oro	600.659
8	Esmeraldas	534.092
9	Galápagos	25.124
10	Guayas	3.645.483
11	Imbabura	398.244
12	Loja	448.966
13	Los Ríos	778.115
14	Manabí	1.369.780
15	Morona Santiago	147.940
16	Napo	103.697
17	Orellana	136.396
18	Pastaza	83.933
19	Pichincha	2.576.287
20	Santa Elena	308.693
21	Santo Domingo de los Tsáchilas	368.013
22	Sucumbíos	176.472
23	Tungurahua	504.583
24	Zamora Chinchipe	91.376
	Unlimited Zones	32.384
	<b>Total CENSO 2010</b>	<b>14.483.499</b>

Source: Instituto Nacional de Estadística y Censos, Año 2010

Population by Age	
Age Range	2010
From 10 to 19	2.958.879
From 20 to 29	2.492.690
From 30 to 39	2.006.015
From 40 to 49	1.569.143
From 50 to 59	1.126.025
From 60 to 69	724.576
From 70 to 79	405.309
From 80 to 89	176.287
Up 90	35.492

Source: Instituto Nacional de Estadística y Censos, Año 2010

Income Range	Families Number
Less than 1 SBU	851.271
From 1 to Less than 2 SBU	1.276.729
From 2 to Less than 3 SBU	730.936
From 3 to Less than 4 SBU	397.305
From 4 to Less than 5 SBU	212.766
From 5 to Less than 6 SBU	137.699
From 6 to Less than 7 SBU	86.821
From 7 to Less than 8 SBU	55.960
SBU= Basic Income= USD 264 in 2011	
Source Metodologic Summary and Main outcomes of National Families Income and Outcome Inquiry, Year 2011-2012	

8) Education system - Number of schools and students in each district (province)

Province	Number of Schools	Teachers	Children
Azuay	1.155	11.811	212.527
Bolivar	807	3.959	63.154
Cañar	606	4.355	73.173
Carchi	408	3.312	48.097
Chimborazo	1.734	9.023	145.045
Cotopaxi	871	7.047	129.749
El Oro	961	10.532	183.245
Esmeraldas	1.656	10.093	204.108
Galápagos	33	539	7.481
Guayas	5.069	50.019	1.055.896
Imbabura	691	6.730	125.725
Loja	1.549	9.971	138.111
Los Ríos	2.114	11.468	241.081
Manabí	4.188	24.769	426.060
Morona Santiago	886	3.369	61.975
Napo	446	3.160	43.825
Orellana	568	3.226	51.762
Pastaza	565	2.531	38.895
Pichincha	2.668	37.850	717.464
Santa Elena	346	4.301	90.402
Santo Domingo De Los Tsachilas	641	5.366	124.496
Sucumbíos	733	3.717	62.933
Tungurahua	773	7.935	142.318
Zamora Chinchipe	508	2.536	36.854
Zona No Delimitada	94	418	9.162
Total	30.070	238.037	4.433.538
Source : Archivo Maestro De Instituciones Educativas - AMIE			

9) Health System - Number of hospitals in each district (province)

Operational Units Distribution by Territorial Planning Zones									
Description	Specialized Hospitals	Specialities Hospitals	General Hospital	Basic Hospital	Health Centers 24 Hours	Rural Health Center	Urban Health Center	Health Stand	Total
Zone 1 Esmeraldas, Carchi, Imbabura, Sucumbios	2	0	8	13	4	132	64	162	390
Zone 2 Pichincha, Napo, Orellana	0	0	2	8	2	68	32	55	167
Zone 3 Cotopaxi, Tungurahua, Chimborazo, Pastaza	2	0	10	18	3	117	51	234	440
Zone 4 Manabí, Santo Domingo de los Tsáchilas	0	0	9	10	9	86	114	148	382
Zone 5 Guayas, Santa Elena, Los Ríos, Bolívar, Galápagos	0	0	6	27	6	106	130	124	404
Zone 6 Azuay, Cañar, Morona Santiago	1	0	6	14	4	108	60	168	368
Zone 7 El Oro, Loja, Zamora Chinchipe	1	0	7	21	3	87	77	190	291
Zone 8 D.M. de Guayaquil, Durán, Samborondón	8	0	9	1	2	8	89	8	130
Zone 9 D.M. Quito	7	2	4	4	4	42	99	14	179
Unlimited Zones Las Golonrinas, Manga del Cura, El Piedrero	0	0	0	0	0	8	0	5	13
<b>Total</b>	<b>21</b>	<b>2</b>	<b>61</b>	<b>116</b>	<b>37</b>	<b>762</b>	<b>716</b>	<b>1108</b>	<b>2823</b>

Source: Geosalud.msp.gob.ec

Social Health Care System For Indigent Patients :

Up to date, in Ecuador, there is no specific Public Health Care System for Indigent people; but according to the Republic of Ecuador Constitution, all Ecuadorian citizens (including Indigent people) have the right to be taken care of, and benefit of the free-of-charge attention, despite any condition or any mental or physical illness.

Besides, all Public or Private Hospital is bound by Law to take care of any Ecuadorian or foreign citizen in case of emergency or critical condition.

However, private Hospitals and NGO's had made great efforts in improving Health Care in indigent people and its worth mentioning.

10) Major Industry (Number of people working for each Industry)

Industry	Economically Active Population
Agriculture, livestock, hunting and silviculture	1.816.897
Fishing	67.795
Mining and quarrying	33.897
Manufacturing Industry (Excludes oil refining)	725.403
Electricity and water supply	27.118
Construction	420.327
Wholesale and retail	1.376.232
Transport and storage	420.327
Financial intermediation	61.015
Other services	1.410.129
Public Administration and Defense Plans Compulsory Social Security	250.840

Source: Own Making

11) Employment rate: 42,3% of the Economically Active Population

## 2. Intellectual Disabilities

1) Laws concerned with persons with Intellectual Disabilities

- Republic of Ecuador Constitution: Articles 47,48,49
- Disability Organic Law: Article 87
- Plan Nacional del Buen Vivir: Articles 1.1 y 1.3
- Consejos de Igualdad
- Health Organic Law
- National Health Care System Organic Law
- Health Code

2) Financial Assistance for persons with Intellectual Disabilities

In Ecuador, 14.479 people are benefiting from “Joaquín Gallegos Lara” program, consisting in delivering financial assistance, a bonus of \$ 240, to a family caregiver or responsible person who takes care of a person suffering from severe physical or mental disability, such support is paid through the National Development Bank (Banco Nacional de Fomento).

3) Services including CBR available for persons with Intellectual Disabilities

In Ecuador, the Traditional Services Model, for Intellectual Disabled people is changing. This New Model, not only involves Social Based, and Opportunities Rehab, but, the Family Inclusions adding the following Services:

- Interinstitutional Cooperation
- Habilitation and Rehabilitation,
- Arts, Sports and Recreation
- Nourishment and Nutrition
- Family Resilience Strenghtening
- Family Re-integration

On the other hand, work in Labour Conditions and Equality of Opportunities is still carried on.

4) Number of services provided including education, welfare, employment promotion and so on and those beneficiaries in each district (province)

Azuay	33
Bolívar	5
Cañar	9
Carchi	9
Chimborazo	17
Cotopaxi	11
El Oro	26
Esmeraldas	18
Galápagos	2
Guayas	53
Imbabura	14

Loja	18
Los Ríos	17
Manabí	46
Morona Santiago	9
Napo	5
Orellana	5
Pastaza	5
Pichincha	161
Provincia	1
Santa Elena	3
Santo Domingo De Los Tsachilas	4
Sucumbíos	11
Tungurahua	15
Zamora Chinchipe	7
<b>Total</b>	<b>504</b>

Source: Own Making

### 3. Outline of your organization

#### 1) Background, vision, strategy

##### Background

The Economic and Social Inclusion Ministry, upgrades its structure to improve the application of the Social Agenda. With this objective, the President of the Republic, Rafael Correa, ordered this Institutional Structure Upgrade.

This new Ministry starts from the “Good Life” vision and the development focused on people and transformation promotion.

##### Vision

Educate society about disabled people Rights and Dignity, which will lead progressively to the termination of any kind of discrimination, Cultural and attitudinal boundaries, limiting development and inclusion.

##### Strategy

Management Model Focuses on:

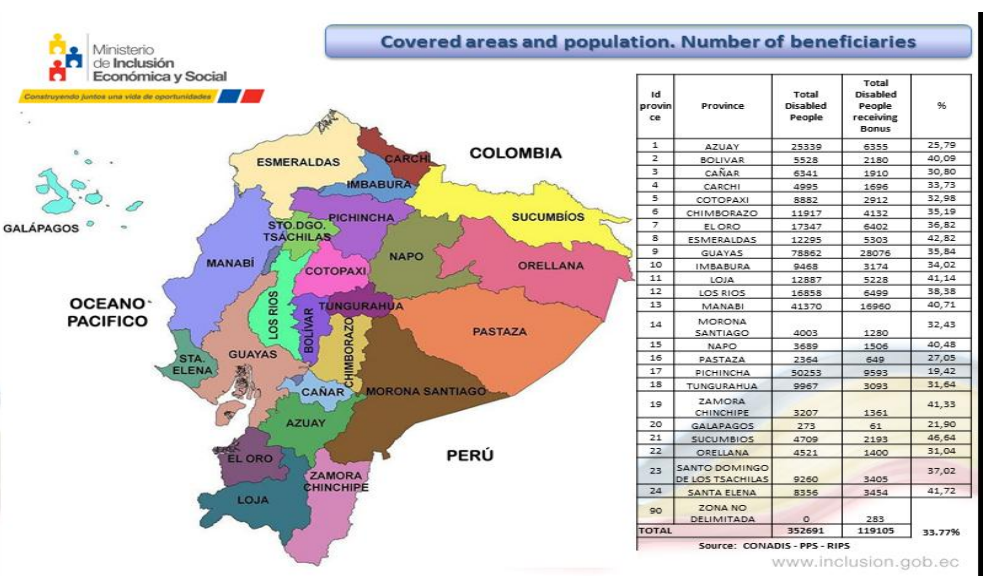
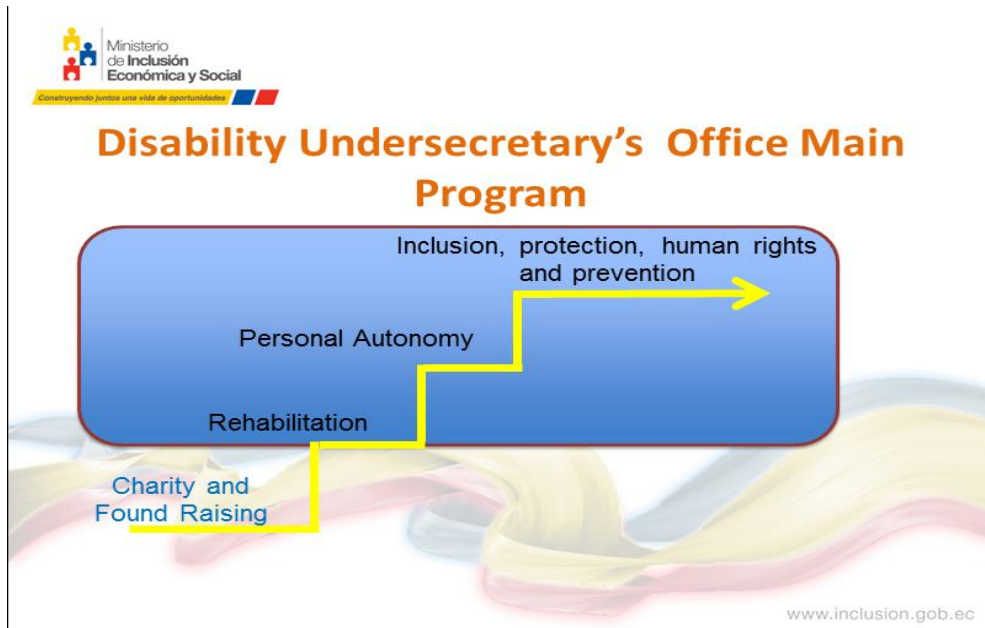
1. Prevention
2. Rehabilitation
3. Opportunity Equality Warranty
4. Quality Services Giving



2) Major programs, covered areas, covered population, number of beneficiaries

The Disability Undersecretary's Office, on behalf of the Ministry, is applying a new Disability Attention Model, which purpose is to progressively terminate the Charity programs and Incomes and turn them into Inclusion, protection, human rights and prevention programs which major is:

- Social Inclusion For Disabled People, Families And Community In Public Places Empowerment Plan (Plan De Fortalecimiento De La Inclusión Social Para Personas Con Discapacidad, Familias En Espacios Públicos)





3) Your position and duty

Coordinate the social component Inclusion for people with disabilities and their families. Artistic spaces with non-competitive games in different communities of the country.

We social dialogues meetings with disabled people to talk about their rights, see your needs and indicate the services we provide as an institution

**4. Community Development program** which include Intellectual Disabilities issues as one of the activities. (If you know any)

- Manuela Espejo Program
- Joaquín Gallegos Lara Program

**5. Situation of Persons with Intellectual Disabilities**

1) Diagnosis (professional responsible for diagnosis)

For diagnosis, the Ministry is applying the primary health care method, which consist in the disabled patient attention in the first level Health Centers.

2) Education (special Education and/ or Integrated Education)

Integrated Education: Children have the right to Education despite their disabilities. Because of this Ecuador signed an agreement to provide inclusive quality education to children and teenagers and to adapt schools to attend diversity. In the other hand, Integrated Education looks for open mind children, with values and people that respect differences.

Special Education: There are 175 schools all country long. They are specialized in assisting children with different kind of disabilities such us: Visual, hearing impairment, deaf- blind, Intellectual, autism and so on.

3) Vocational Training and Job Opportunity

76.859 Disabled people are included in labor market

4) Support Organization

i. Governmental Agencies: Vicepresidencia de La República, , Consejo Nacional de Igualdad de Discapacidades(Conadis), Ministerio de Salud Pública, Ministerio de Inclusión Económica y Social, Ministerio Coordinador Desarrollo Social, Ministerio de Desarrollo Urbano y Vivienda, Ministerio de Relaciones Laborales, Ministerio de Electricidad y energía Renovable, Ministerio de Turismo, Ministerio del Ambiente.

ii. Number of NGOs concerned with persons Intellectual Disabilities: Three NGOs:

- FENODIS
- FEPAPDEM
- “El Triángulo” Foundation

**6. Based on the information above, what are the issues to solve to conduct effective supports for persons with Intellectual Disabilities?**

7.

Trying to articulate with public and private institutions for better services and expand coverage, specialized care for people with intellectual disabilities.

Promoting inclusive education from the family, community and institution.

Develop better strategies for:

Training technical staff

Early detection of disability

Early intervention

Rehabilitation

Prevention

Protection.