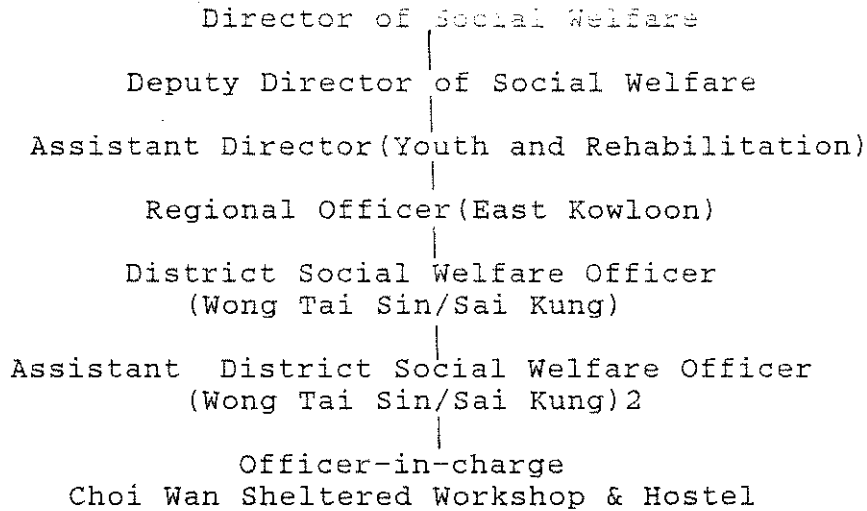


COUNTRY REPORT

1. Name of Training Course: The Group Training Course in
Mental Retardation in FY 1995
2. Name of Participant: LAM Chi-ming James
3. Name of Country: HONG KONG
4. Name of Organization: Choi Wan Sheltered Workshop
and Hostel, Social Welfare
Department

5. Organization Chart



I work as an Officer-in-charge of the Choi Wan Sheltered Workshop and Hostel. As the centre includes a sheltered workshop and hostel, I have to oversee the administration of both of them. Hence, I have to supervise 20 staff both professional and non-professional. Also, I have to secure job orders from various commercial companies through marketing done by myself.

6. An outline of the status of educational, welfare/social and medical systems and services, financial aids and voluntary activities for people with mental retardation in Hong Kong

Current rehabilitation policy in Hong Kong contained in the 1990 Rehabilitation Program Plan is endorsed by the Rehabilitation Development Coordinating Committee(RDCC). The RDCC is the principal advisory body to the Government on the development and implementation of rehabilitation services. The policy objective for rehabilitation stated in the 1992 Government Green Paper "Equal Opportunities and Full Participation: A Better Tomorrow for All"*. Services provided to the people with mental retardation are as below:

A. Educational Rehabilitation

- a. screening services
 - Comprehensive Observation Scheme(COS)
 - special services centre
- b. assessment services
- c. remedial and treatment services including centre-based and peripatetic services
- d. special education provision
 - disabled children are encouraged to receive education in ordinary school
 - Early Education and Training Centre(EETC): for aged 0 -2
 - Special Child Care Centre(SCCC): for aged 2 - 5:11
 - Integrated Child Care Centre(ICCC): for aged 2 - 5:11
 - Integrated Kindergarten Program(I K/G): for aged 3 - 5:11
 - Preparatory Classes in Special Schools: for aged 4 - 5:11
 - Primary and Secondary Education
 - Hospital Schools
- e. adult education service

B. Social/Welfare Rehabilitation

- a. child care service
 - small group home
 - foster care service
 - occasional child care service
- b. residential care
 - residential service for Special Child Care Centre
 - hostel for severely mentally handicap, moderate mentally handicap
- c. casework counselling
- d. training in daily living skills
 - day activity centre, sheltered workshop
- e. home help service
- f. social, sports and recreational facilities
- g. cultural and art services
- h. housing - compassionate rehousing
- i. public education: Committee on Public Education in Rehabilitation(COMPERE)

C. Medical Rehabilitation

- a. identification and developmental screening services
 - neonatal examination
 - Comprehensive Observation Scheme(COS)
 - Special Education Services Centre
 - Combined Screening Program
- b. multi-disciplinary assessment
 - Child Assessment Centre
- c. treatment at hospitals, rehabilitation centres and clinics
 - optalmic assessment
 - audiological assessment
 - speech assessment
 - psychological assessment
 - school-based psychological service
- d. general and specialist out-patient services

D. Vocational Rehabilitation

- a. vocational guidance, assessment and training
 - Vocational Training Centre(VTC)
 - Technical Aids and Resource Centre(TARC)
- b. employment services
 - Selective Placement Division of the Labor Department
 - employment in the Civil Service
 - supported employment
 - sheltered workshops
 - day activity centres

E. Financial Aids

- a. Disability Allowance Scheme
 - Normal Disability Allowance
 - Higher Disability Allowance
- b. Public Assistance Scheme
- c. Samaritan Fund: assistance for traveling expenses
- d. Others:
 - Criminal and Law Enforcement Injuries Compensation Scheme
 - Traffic Accident Victims Assistance Scheme
 - Emergency Relief
 - Legal Aid
 - Tax Deduction

F. Voluntary Activities

- a. Hong Kong Sports Association for Mentally Handicapped
- b. Gateway Club
- c. Art with the Disabled Association(Hong Kong)

* A Working Party on the Training and Employment Opportunities for the People with Disabilities has been set up in 1994. A mid-term report will be published soon.

7. Philosophy on rehabilitation services for people with mental retardation and problems to solve when making the philosophy an actuality

Having a mentally retarded in a family is perceived as a bad-luck both by the family and outsiders as he/she is considered to be a burden of the parents and the society as a whole.

However, I believe that by giving people with mental retardation equal opportunities to enjoy and exercises basic civic rights and by promoting full participation by them are essential of integrating them into the social integration.

I therefore view that "community care" both by the mentally retarded and the society as a whole is the key to break the "common belief" and regain the status of them.

8. Community-based rehabilitation program provided for people with mental retardation in Hong Kong

Community-based rehabilitation is an innovative service making resources for rehabilitation available in the community.

In general, a variety of welfare services in the community are available. They are:

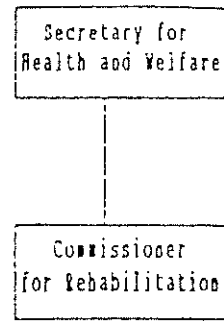
- a. day activity centre
- b. home help service
- c. home-based training program
- d. foster care for mildly mentally handicapped children
- e. small group home
- f. supervised small group home for mentally handicapped visually impaired persons
- g. supported housing
- h. social and recreational centre

Community-based rehabilitation in Hong Kong will depend on the willingness of public involvement. Hence, public education with special focus on active participation is very important to enhance and implement the concept of community-based rehabilitation.

9. Organizational Chart of Service Delivery Systems

Division of Responsibilities on Rehabilitation Policies and Services

Formulation of Policies



Provision of Services

Buildings and Lands Dept.	Education Dept.	Dept. of Health	Rehabilitation Division, Health and Welfare Branch	Labour Dept.	Social Welfare Dept.	Transport Dept.	Other govt. depts.
---------------------------	-----------------	-----------------	--	--------------	----------------------	-----------------	--------------------

Building access	Special education	Health education	C.R.R.	Selective placement	Sheltered workshop	Transport facilities	Legislation
	I/KG	Screening, assessment & counselling	Planning & co-ordination	Industrial safety	Residential services	Home-help services	Public education
					Community support services		Recreation
					I.C.C.C.		Road safety
					S.C.C.C.		
					D.A.C.		