

COUNTRY

REPORT

FIDI

SURAJ NARAYAN
HEAD TEACHER
SIGATOKA SCHOOL FOR SPECIAL EDUCATION

INTELLECTUAL DISABILITIES: COUNTRY REPORT: FIJI

NAME: MR. SURAJ NARAYAN

COUNTRY: FIJI

NAME OF ORGANISATION: FIJI CRIPPLED CHILDREN SOCIETY
SIGATOKA BRANCH

OUTLINE OF THE FUNCTION OF YOUR ORGANISATION

FIJI CRIPPLED CHILDREN SOCIETY, SIGATOKA BRANCH WAS FORMED IN EARLY SIXTIES LARGELY TO CATER FOR THE EDUCATIONAL AND MEDICAL NEEDS OF THE VICTIMS OF POLIOMYELITIS. LATER THE SERVICES WERE EXTENDED TO A WIDER CROSS SECTION OF CHILDREN WITH DISABILITIES - CHILDREN WITH SPECIAL NEEDS - BE THEY HEARING IMPAIRED, PHYSICALLY DISABLED OR INTELLECTUALLY RETARDED THROUGH DOWN SYNDROME OR OTHER CAUSES. THE URGE, PLIGHT AND THE NEED OF SOME FORM OF EDUCATION FOR THESE CHILDREN SAW THE ESTABLISHMENT OF A SPECIAL EDUCATION SCHOOL TO OFFER EDUCATION AND SURVIVAL TRAINING NEEDS OF DISABLED CHILDREN IDENTIFIED THROUGH THE SCREENING PROGRAMME IN THE PUBLIC HEALTH CENTRES . DURING THE MOTHER AND CHILD HEALTH CLINICS OR AT THE HOSPITALS MATERNITY UNIT DURING DELIVERY FOR CONGNITAL CASES. SOME CASES ARE PICKED UP INCIDENTALLY THROUGH INFORMATION FILTERED DOWN BY THE NEIGHBOURS OR CONCERNED VILLAGE OR SETTLEMENT PEOPLE.

THE SOCIETY'S MANAGEMENT COMMITTEE MEETS REGULARLY TO OVERSEE THE OVERALL ADMINISTRATION OF THE SCHOOL AND ASSIST THE MINISTRY OF EDUCATION APPOINTED. HEAD TEACHER TO KEEP THE SCHOOL FUNCTIONING AND OPERATING SMOOTHLY WITH IN THE GUIDELINES SET OUT BY THE MINISTRY OF EDUCATION (M.O.E). IT IS THE RESPONSIBILITY OF THE MANAGEMENT BOARD TO LIASE WITH THE MINISTRY OF

EDUCATION ON THE APPOINTMENT OF CIVIL SERVANT TRAINED TEACHERS.

(REMUNERATION OF SALARY TO THE TEACHERS IS BY THE GOVERNMENT). THE

EDUCATION OF HANDICAPPED CHILDREN IS A PARTNERSHIP BETWEEN THE CHARITABLE NON - GOVERNMENT ORGANISATION (THE SOCIETY) AND THE MINISTRY OF EDUCATION.

THE FINANCIAL ASPECTS OF THE INSTITUTION IS UNDER THE MANAGEMENT ARM OF THE SOCIETY. IT IS THE RESPONSIBILITY OF THE FIJI CRIPPLED CHILDREN SOCIETY, SIGATOKA BRANCH TO EQUIP THE SCHOOL AND RAISE FUNDS TO COVER THE MAJOR COSTS OF ADMINISTERING THE SCHOOL.

(I) MAINTANANCE/ADDITION OF THE SCHOOL BUILDING .

(II) MAINTANANCE OF SCHOOL BUS.

(III) PURCHASING OF SCHOOL EQUIPMENT - BENEFICIAL FOR THE EDUCATION OF THE CHILDREN WITH DISABILITIES AND SPECIAL NEEDS.

(IV) EMPLOYING AND PAYING WAGES OF AUXILLIARY STAFF.

(V) NEGOTIATION WITH OTHER GOVERNMENT MINISTRIES /AGENCIES FOR PROFESSIONAL INPUT IN THE SCHOOL PROGRAM TO IMPROVE THE DELIVERY SERVICES TO THE STUDENTS AND THEIR FAMILIES EG.

(a) MINISTRY OF HEALTH - PHYSIOTHERAPY/SPEECH & LANGUAGE DEVELOPMENT .

(b) MINISTRY OF SOCIAL WELFARE - ADVISE AND MONITOR THE SOCIAL ASPECT OF THE FAMILIES.

(c) FIJI NATIONAL COUNCIL FOR DISABLED PERSONS - FOR POLICY AND ADVICE ON INFRASTRUCTIVE DEVELOPMENT, LEGAL, EDUCATION, HOUSING AND PUBLIC UTILITIES TO CATER FOR THE NEEDS OF THE HANDICAPPED PEOPLE.

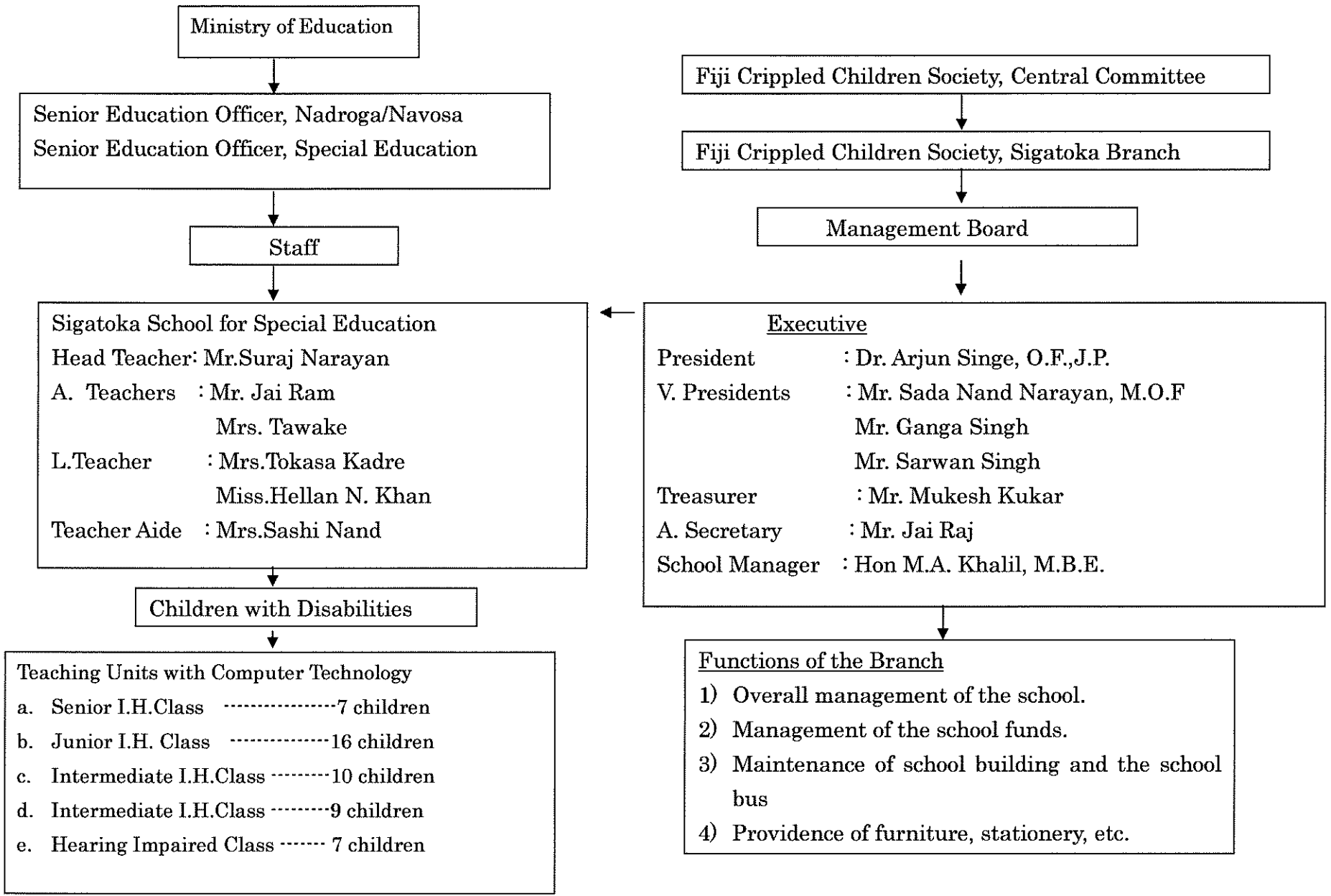
- (VI) NEGOTIATION WITH LOCAL AND INTERNATIONAL DONOR AGENCIES FOR GRANTS TO
- IMPROVE, EXTEND IMPLEMENT NEW APPROPRIATE MANAGEABLE PROGRAMMES.

ORGANISATION CHART: (SEE OTHER PAPER)

THE CURRENT SITUATION AND TRENDS IN REHABILITATION SERVICES. (PLEASE OUTLINE THE STATUS OF EDUCATIONAL, WELFARE/SOCIAL AND MEDICAL SYSTEMS AND SERVICES, FINANCIAL AIDS AND VOLUNTARY ACTIVITIES FOR PEOPLE WITH INTELLECTUAL DISABILITIES IN YOUR COUNTRY.

THE THREE FIJI SOCIETIES FOR INTELLECTUALLY HANDICAPPED (ONE FOR SUVA, ONE FOR LAUTOKA AND THE OTHER FOR NADI) ADMINISTER SCHOOLS FOR CHILDREN WITH INTELLECTUAL DISABILITIES. THIS IS IN CONJUNCTION WITH THE MINISTRY OF EDUCATION WHICH APPOINTS AND PAYS THE SALARY OF CIVIL SERVANTS TEACHERS TO THE SPECIAL EDUCATION SCHOOLS. SOME BRANCHES, APART FROM CATRING FOR THE EDUCATION OF THE HEARING IMPAIRED AND PHYSICALLY DISABLED CHILDREN, ALSO PROVIDES EDUCATION FOR INTELLECTUALLY DISABLED CHILDREN. THIS IS DUE TO NO SEPARATE INSTITUTION FOR THESE CHILDREN IN THESE AREAS AND ALSO TO INTERGRATE THE HEARING IMPAIRED/PHYSICALLY HANDICAPPED WITH CHILDREN WHO ARE INTELLECTUALLY DISABLED.

NEARLY ALL SPECIAL EDUCATION SCHOOLS ARE URBAN BASED AND PROVIDE A CURRICULUM BASED PROGRAMME. THE URBANISATION OF THESE SCHOOLS DOES POSE GREAT DIFFICULTIES ON THE EDUCATION OF HANDICAPPED CHILDREN FROM RURAL AND INTERIOR AREAS AND CHILDREN FROM OUTER AREAS (OUTER MARITIME PROVINCES)



Ministry of Education

Senior Education Officer, Nadroga/Navosa
Senior Education Officer, Special Education

Staff

Sigatoka School for Special Education
Head Teacher: Mr.Suraj Narayan
A. Teachers : Mr. Jai Ram
Mrs. Tawake
L.Teacher : Mrs.Tokasa Kadre
Miss.Hellan N. Khan
Teacher Aide : Mrs.Sashi Nand

Children with Disabilities

Teaching Units with Computer Technology

- a. Senior I.H.Class7 children
- b. Junior I.H. Class16 children
- c. Intermediate I.H.Class10 children
- d. Intermediate I.H.Class9 children
- e. Hearing Impaired Class 7 children

Fiji Crippled Children Society, Central Committee

Fiji Crippled Children Society, Sigatoka Branch

Management Board

Executive

President : Dr. Arjun Singe, O.F.,J.P.
V. Presidents : Mr. Sada Nand Narayan, M.O.F
Mr. Ganga Singh
Mr. Sarwan Singh
Treasurer : Mr. Mukesh Kukar
A. Secretary : Mr. Jai Raj
School Manager : Hon M.A. Khalil, M.B.E.

Functions of the Branch

- 1) Overall management of the school.
- 2) Management of the school funds.
- 3) Maintenance of school building and the school bus
- 4) Providence of furniture, stationery, etc.

THE TWO HOSTELS MANAGED BY SUVA AND LAUTOKA BRANCHES OF FIJI CRIPPLED CHILDREN SOCIETY DO NOT PROVIDE HOSTEL FACILITIES TO CHILDREN WITH INTELLECTUAL DISABILITIES. THERE ARE NO RESIDENTIAL INSTITUTION FOR SUCH CHILDREN. HENCE SUCH CHILDREN FROM RURAL AND OUTER AREAS ARE LEFT WITH NO FORMAL EDUCATION AND SURVIVAL SKILLS. THOSE WHO HAVE GAINED ACCESS TO EDUCATION ARE PROVIDED WITH A CURRICULUM WITH EMPHASIS ON SKILL DEVELOPMENT. THE MAINSTREAM PRIMARY SCHOOL CURRICULUM IS THE MAJOR BASIS OF THE SCHOOL PROGRAMME. THE AREAS COVERED IN THIS SPECIAL EDUCATION CURRICULUM ARE -:

ii) COGNITIVE DEVELOPMENT: PERCEPTUAL SKILLS, EARLY THINKING SKILLS, BASIC MATHS, FURTHER MATHS AND SCIENCE .

(ii) **GROSS MOTOR DEVELOPMENT:** PHYSICAL DEVELOPMENT OF BODY

(iii) FINE MOTOR DEVELOPMENT: COGNITIVE DEVELOPMENT , HAND EYE CO-ORDINATION AND PROBLEM SOLVING SKILLS.

(iv) COMMUNICATION SKILLS DEVELOPMENT: 1ST & 2ND LANGUAGE RECEPTIVE.
1ST & 2ND LANGUAGE EXPRESSIVE.

(v) DAILY LIVING SKILLS: (PERSONAL CARE, DOMESTIC SKILLS COMMUNITY SKILLS AND VOCATIONAL SKILLS.)

(vi) SOCIAL DEVELOPMENT: (DEVELOPMENT OF SKILLS RELATED TO APPROPRIATE SOCIAL BEHAVIOUR AND TO ENCOURAGE ACCEPTABLE SOCIAL INTERACTION AND RELATIONSHIPS.)

(vii) CREATIVE & EXPRESSIVE: (DEVELOPMENT OF SKILLS/ENCOURAGE PERSONAL CHARACTERISTICS TO EXPRESS THEMSELVES

EMOTIONALLY AND CREATIVELY

THERE IS AN EARLY INTERVENTION SERVICE DELIVERY FROM 0 - 8 YEARS, PRIMARY EDUCATION DELIVERY TO AGES 6 - 16 AND VOCATIONAL TRAINING FOR SCHOOL LEAVERS. THERE ARE PLANS IN THE PIPELINE FOR THE VOCATIONAL TRAINING CENTRE UNDER FIJI REHABILITATION COUNCIL 1999 PROGRAMME TO OFFER TRAINING IN THE FOLLOWING AREAS:-

- (a) WOODWORK, UPHOLSTERY & FURNITURE REPAIR WORK.
- (b) BATIK, TIE & DYE, SCREEN PRINTING.
- (c) HOME ECONOMICS, CERAMIC, NURSERY, HYDROPONIC.
- (d) PAPER MAKING, LEATHER WORK/CRAFT.
- (e) BOOK BINDING & OFFSET PRINTING, WEAVING.
- (f) SWITCH BOARD TECHNIQUE, COMPUTER TECHNOLOGY.
- (g) CROCHET AND INDIGENOUS CRAFT.
- (h) AUTOMOTIVE (PANEL BEATING ETC.)

THE MAJOR FACTOR IN THE IMPLEMENTATION OF THESE PROGRAMME WILL BE LARGELY DETERMINED BY THE AVAILABILITY OF MUCH NEEDED FUNDS AND THE ONUS IS ON PARENTS, CONCERNED MEMBERS OF THE PUBLIC AND NON - GOVERNMENT ORGANISATIONS TO SEEK PUBLIC SUPPORT THROUGH FUND RAISING AS NO TUITION FEES ARE REQUESTED OF PARENTS THROUGHOUT THE EDUCATION OF HANDICAPPED CHILDREN; EVEN TRANSPORTATION TO AND FROM SCHOOL IS FREE. THE SCHOOL MANAGEMENT BOARDS OFTEN TURNED TO INTERNATIONAL DONOR AGENCIES, PRIVATE ENTERPRISES, INDIVIDUALS AND SERVICE ORGANISATIONS TO FUND PROGRAMS. THE SCHOOL COMMITTEES PROVIDE SCHOOL BUSES TO TRANSPORT CHILDREN TO AND FROM SCHOOL. THERE ARE SOME AREAS EG. SIGATOKA, WHERE MAJORITY OF THE HANDICAPPED CHILDREN ARE PROVIDED FREE TRANSPORTATION BY REGULAR PUBLIC BUSES.

MEDICAL FACILITIES ARE AVAILABLE TO ALL HANDICAPPED CHILDREN. HOWEVER, SOPHISTICATED AND COMPLICATED CASES WHERE TREATMENT IS REQUIRED IS NOT AVAILABLE. SUCH CASES ARE REFERRED OFFSHORE EG. NEW ZEALAND AND AUSTRALIA. FOOTING MEDICAL BILLS FOR OFFSHORE TREATMENT POSES GREAT PROBLEM TO PEOPLE. NEVERTHELESS COMMUNITY ASSISTANCE IS GREATLY APPRECIATED. THE SUVA BASED ST. GILES HOSPITAL IS A GOVERNMENT RESIDENTIAL HOSPITAL - THE ONLY MENTAL HOSPITAL IN FIJI WHICH TREATS AND REHABILITATES VERY SEVERE CASES OF PEOPLE WITH INTELLECTUAL DISABILITIES.

VOLUNTARY ACTIVITIES FOR PEOPLE WITH INTELLECTUAL DISABILITIES.

VERY OFTEN PROVIDING BASIC NECESSITIES OF LIFE FALLS ON THE FAMILIES AS PEOPLE WITH INTELLECTUAL DISABILITIES FIND IT EXTREMELY DIFFICULT TO ENGAGE IN ANY WAGES/SALARY EARNING EMPLOYMENT. SOME ARE USEFULLY OCCUPIED IN FAMILY BUSINESSES WHILE RURAL POPULATION ASSIST ON FARMS ETC. MAJORITY ARE OVER PROTECTED AND CONFINED IN HOMES WITH NO USEFUL OCCUPATION, APART FROM ASSISTING IN HOUSEHOLD DUTIES.

PHILOSOPHY ON REHABILITATION SERVICES FOR PEOPLE WITH INTELLECTUAL DISABILITIES AND PROBLEMS TO SOLVE WHEN MAKING THE PHILOSOPHY ACTUAL.

WE VERY FIRMLY BELIEVE THAT EVERY HANDICAPPED PERSON IS ENTITLED TO A QUALITY OF LIFE AND THAT THIS LINE OF THINKING CAN ONLY BE REALIZED IF THE MULTIDISPLINARY TEAM APPROACH OF TEACHING IS ADOPTED IN THIS AREA. BY THIS I MEAN THAT ALL PROFESSIONALS HAVING AN IMPUT INTO A STUDENT'S EDUCATIONAL PROGRAMME SHOULD BE FOCUSSED ON THE SAME IDENTIFIED LONG TERM AND SHORT TERM GOALS, SO THAT COMMITMENT AND EFFORTS ARE CHANNELLED TOWARDS THE SAME OUTCOME

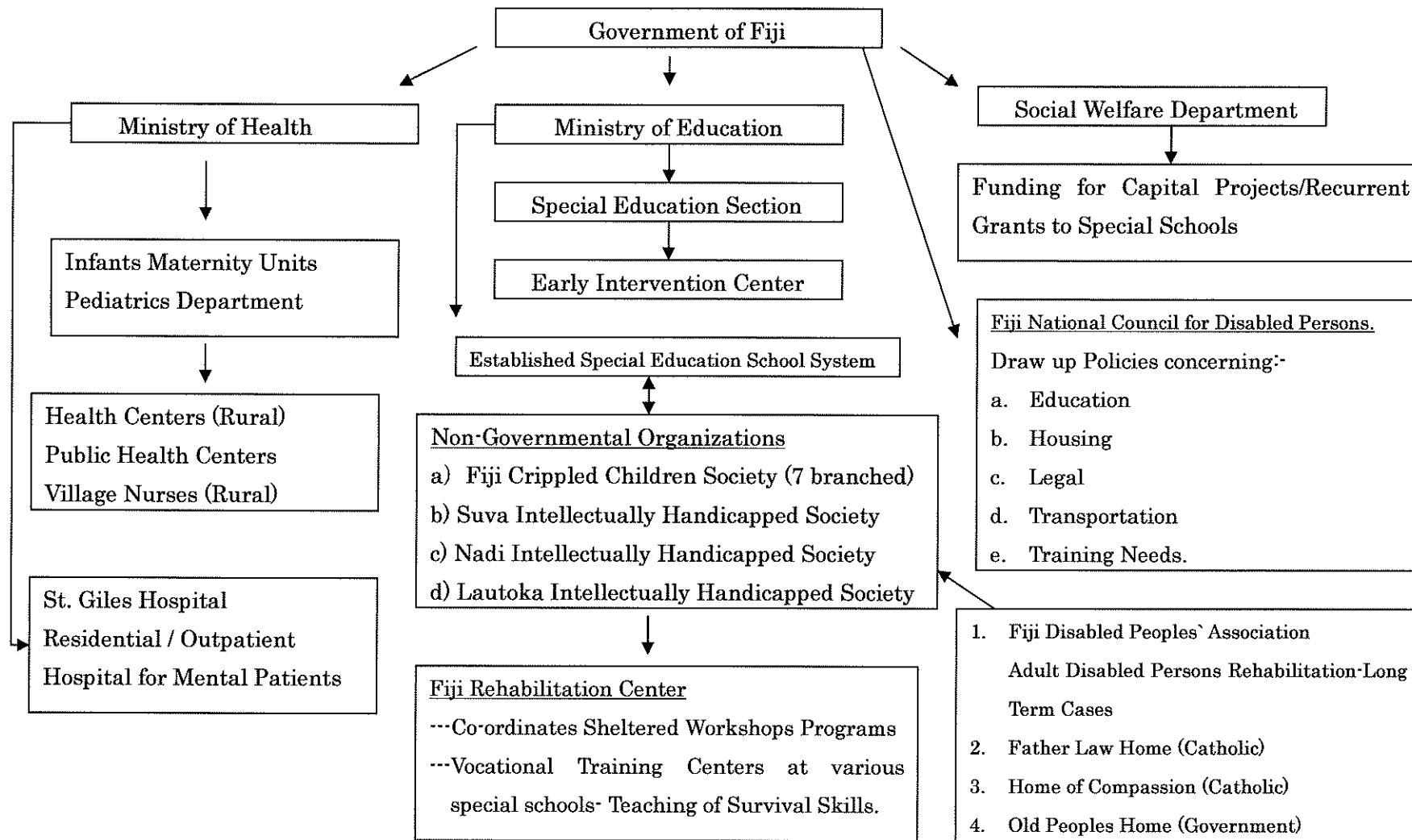
TO ENHANCE THE STUDENTS AND HIS/HER PARENTS QUALITY OF LIFE. WE ALSO VERY STRONGLY FEEL AND BELIEVE THAT PEOPLE WITH INTELLECTUAL DISABILITIES HAVE THE SAME FUNDAMENTAL RIGHTS, FREEDOMS, OPPORTUNITIES FOR EMPLOYMENT AND RESPONSIBILITIES AS THEIR NON - DISABLED PEERS, AND IN TERMS OF EDUCATION, ALL DISABLED STUDENTS HAVE THE RIGHT TO THE MOST APPROPRIATE EDUCATIONAL PROGRAMMES TO ADDRESS THEIR INDIVIDUAL NEEDS, DEVELOP THEIR HIDDEN POTENTIALS AND MAXIMISE THEIR OBVIOUS STRENGTHS. PERSONS WITH INTELLECTUAL DISABILITIES OFTEN NEED SPECIALISED SUPPORT SERVICES TO PROVIDE THEM WITH OPORTUNITIES TO ACHIEVE THEIR POTENTIAL AND TO BECOME CONTRIBUTING MEMBERS OF THE SOCIETY IN A RESPECTABLE, DIGNIFIED AND MEANINFUL WAY. CURRENTLY THE SPECIAL EDUCATION IS CONFINED ONLY TO PRIMARY LEVEL OF EDUCATION; HENCE NO PROVISION FOR HIGHER EDUCATION - EXCEPT FOR BILND STUDENTS THUS DEPRIVING PEOPLE WITH DISABILITIES TO ADVANCE AND DEVELOP SKILLS FOR EMPLOYMENT OR GET TRAINING TO CREATE THEIR OWN MICRO BUSINESSES.

COMMUNITY - BASED REHABILITATION PROGRAMME PROVIDED FOR PEOPLE WITH INTELLECTUAL DISABILITIES IN YOUR COUNTRY.

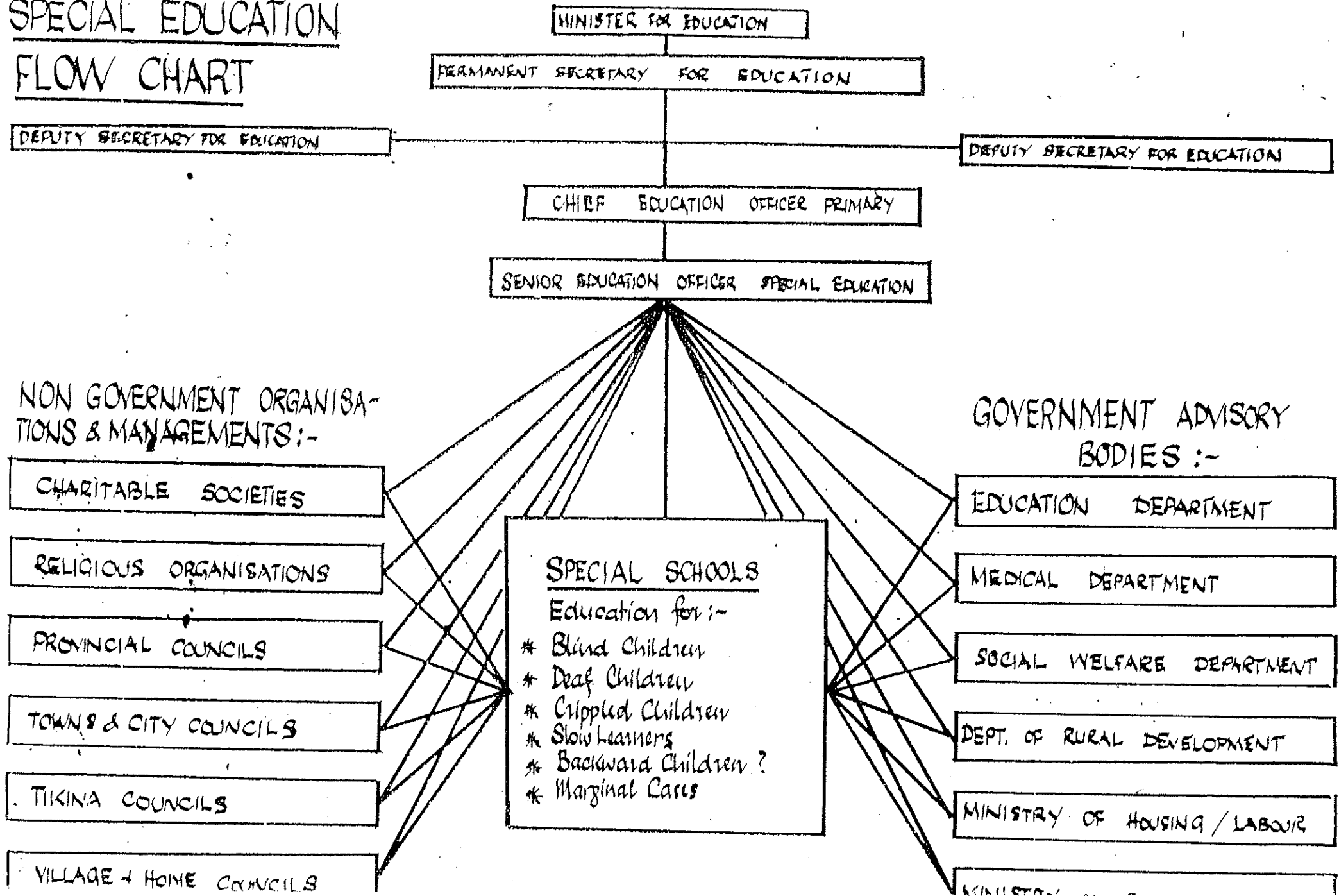
THE COMMUNITY BASED REHABILITATION PROGRAMMES ARE LARGELY PROVIDED AND CO - ORDINATED BY NON - GOVERNMENT ORGANISATIONS. THESE N.G.O'S ARE ASSISTED BY FIJI NATIONAL COUNCIL FOR DISABLED PERSONS - A STATUTORY ORGANISATION SET UP AND FUNDED BY THE GOVERNMENT. THE MAIN FUNCTION OF THE F.N.C.D.P IS TO LEGISLATE POLICIES THROUGH ITS VARIOUS COMMITTEES EG. EDUCATION, LEGAL, HOUSING, EMPLOYMENT.

- A. - THE COUNTER STROKE ASSOCIATION HAS A SUPPORTIVE COMMUNITY - BASED REHABILITATION PROGRAM FOR ADULTS WITH STROKE (HEMIPLEGIAS) IN CONJUNCTION WITH THE REHABILITATION CENTRE AT THE TAMAVUA HOSPITAL IN SUVA. THIS ENABLES THE ASSOCIATION TO DRAW THE MEDICAL SUPPORT STAFF TO OFFER CLIENTS COUNSELLING FOR THEMSELVES AND THEIR FAMILY MEMBERS.
- B. FIJI DISABLED PEOPLE'S ASSOCIATION IS ANOTHER N.G.O. ENGAGED IN A SUPPORTIVE AND REHABILITATIVE NATURE WITH A VIEW TO FURTHER THE COURSE OF THE DISABLED PEOPLE.
- C. SAVE THE CHILDREN - FIJI HAS, OVER THE PAST FEW YEARS, DEVELOPED A PROGRAMME WHERE COMMUNITY - BASED REHABILITATION (C.B.R.) PERSONELL ARE TRAINED FOR RURAL AREAS. THESE C.B.R'S HOME BASED COUNSELLING AND ASSISTANCE TO THE CLIENTS AS WELL AS THE FAMILY MEMBERS. THESE C.B.R'S REFER CASES TO SPEICAL SCHOOLS FOR FURTHER ASSESSMENTS AND POSSIBLE EDUCATION AMD REHABILITATION.
- D. THERE IS PROVISION FOR HOSPITAL BASED REHABILITATION AT ST. GILES HOSPITAL IN SUVA. THIS IS LONG TERM CASES. SOME ARE RELEASED UPON SUCCESSFUL REHABILITATION AND THE FAMILIES ARE ENCOURAGED TO ACCEPT THEIR FAMILY MEMBER BACK. SOME VERY SUCCESSFULLY INTERGRATE WITHIN THE COMMUNITY, WHILE SOME FAIL AND RETURN TO THE INSTITUTION FOR FURTHER REHABILITATION AND THERAPY.

Service Deliver System and Relevant Laws and Regulations



SPECIAL EDUCATION FLOW CHART



NON GOVERNMENT ORGANISATIONS & MANAGEMENTS :-

- CHARITABLE SOCIETIES
- RELIGIOUS ORGANISATIONS
- PROVINCIAL COUNCILS
- TOWNS & CITY COUNCILS
- TIKINA COUNCILS
- VILLAGE + HOME COUNCILS

GOVERNMENT ADVISORY BODIES :-

- EDUCATION DEPARTMENT
- MEDICAL DEPARTMENT
- SOCIAL WELFARE DEPARTMENT
- DEPT. OF RURAL DEVELOPMENT
- MINISTRY OF HOUSING / LABOUR
- MINISTRY

SPECIAL SCHOOLS
Education for:-

- * Blind Children
- * Deaf Children
- * Crippled Children
- * Slow Learners
- * Backward Children?
- * Marginal Cases