

## 9. Thailand

Mr. Udom Pejarasangharn. M. D.

## Intellectual Disabilities

(JFY 1999)

### Country Report

1. Name : Dr. Udom Pejarasangham. M.D.

2. Country : Thailand

3. Organization : Rajanukul Hospital,  
Department of Mental Health,  
Ministry of Public Health.

#### 4. Function of Rajanukul Hospital.

Rajanukul Hospital is the one in only two special hospital for intellectual disabilities in Thailand. The functions are as follow :-

4.1. To provide prevention and treatment for intellectual disabilities and related-disorders or problems by :-

- early stimulation for delayed development children,
- medical treatment & medical rehabilitation,
- educational rehabilitation,
- occupational rehabilitation and
- social rehabilitation.

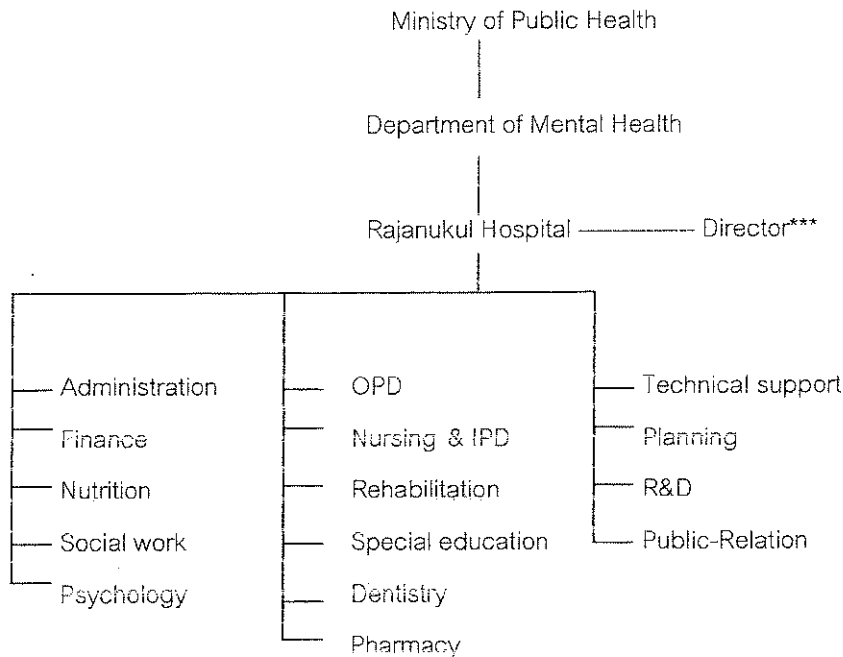
4.2. To provide the technical support to health service agencies (health post, community hospital, general & central hospital).

4.3. To be a training center for doctor, nurse, physiotherapist, teacher in special education and other professional which related to intellectual disabilities.

4.4. To be The National Information center for Intellectual Disabilities.

4.5. To be The R&D Center for Intellectual Disabilities.

### 5. Organization Chart .



\*\*\* I am the director of the hospital.

### 6. Current Situation and Trends in Rehabilitation Services.

There are two special hospitals which provide the comprehensive care to intellectual disability persons. The first one is in Bangkok (Rajanukul Hospital) and the second is in Chiang Mai. Because of the small amount of special hospital, our main problems are coverage and accessibility to services. We try to resolve these problems by training the staffs (Doctors, Nurse, others health officer) in community, general and central hospitals to have some knowledge and skill in intellectual disabilities. These staffs will provide services, medical & physical rehabilitation, to those who suffered from ID. However, this is in the beginning process, there are not more than 10 percent of hospitals that can provide these services.

In educational rehabilitation, there are many movements. The Ministry of Education advocated the policy of education for all. All primary & secondary schools have to admit the handicap child & arrange integrated education programme for them. In the past, we can admit only 9 percent of all handicap child to integrated education programme. But, by the policy "education for all", the situation will be improved.

In Thailand, there are laws and regulation for handicap persons. By these laws, ID can have free medical services, social welfare or financial aids from government and some non government agencies. After 7<sup>th</sup> FESPIC GAMES, there are many movement for all handicaps, the mains are Right & Equality. By now Thai society much more accept the handicaps than in the past, but we can not stress that all handicaps are protected and served by the law of Right & Equality.

### 7. Philosophy.

The goal of rehabilitation service is Independent Living.

The successful depend on participation of family and community. But the great problem is the family or community attitude to ID. Most of them look at ID like the useless living, it is a burden for family or society. If we can not overcome this attitude, we can not reach the Independent Living for ID.

### 8. CBR Programme for ID in Thailand.

Actually, we have no specific CBR center for ID. But we try to set up the developmental stimulating clinic in every hospitals (community, general & central) over the country. For NGO movement there are many CBR Programme but all of them are a small one that can serve only a small group of ID. For Rajanukul Hospital, we have two CBR Centers in Bangkok. These are the demonstrating CBR center which use for performing R&D, personnel training and the community service purposed.

### 9. Service Delivery System.

The main health provider in Thailand is The Office of Permanent Secretary (OPS), Ministry of Public Health. The Department of Mental Health is the technical department, our responsibility is to help the OPS to work effectively and to be the final agency to look after the complicated case. The flow of services are as below.

