

1. Indonesia

Mr. Adde Soeratno

INTELLECTUAL DISABILITIES COUNTRY REPORT

By Adde Soeratno

I. General Information

Republic of Indonesia is an archipelago country, which is located in tropical zone, consist of islands spread along equator from 93 degree to 141 degree East Longitude and from 6 degree to 141 degree East Longitude and between Asia Continent and Australia Continent and Pacific and Indian Ocean. It consist of 5 main islands and about 30 smaller archipelago as totaling 17,000 islands. The main islands are Java, Sumatra, Kalimantan, Sulawesi and Irian Jaya. The estimated areas of the Republic of Indonesia is 5,193,250 km², which consist of the land territory of 2,027,087 km² and a sea territory of 3,166,163 km² (Based on the International Law of the Sea Agreement).

It is estimated that 66 % of Indonesian population live in island of Java which its area itself only about 7 % of total land area of Indonesia. Consequently most of the rehabilitation problems for People With Disability will be in Java.

Life expectancy. Because the nutrition program has succeeded in the past year, the Indonesian old aid increasing their life expectancy from 60 years to 68 years. It because the international age included the Japanese government.

Infant mortality rate is low because the program of Family Planning Program included the under five year program also in succeeded.

Literary rate. Population 10 years of age has never attended school is 12.620.620 people (Result of 1990 Population Census). After a few year the total number reducing by the literate program (Kejar Paket A for Elementary School and Kejar Paket B for Secondary School). By the crisis the total number of illiterate increasing again and we could have not the exact data.

Education . The guidance to extraordinary school (SLB) set up in every district levels, through providing reference books for the teachers as well as the student curriculum book, and literary books along with educational aid devices and instrument. For extra ordinary school deviled into 4 category like the physical school, deaf school, blind school and mentally retarded school.

Unemployment rate. After the economic crisis the number of unemployment increasing because the lock out in some factory. We have no exact data but more than 30 million. It is the transition era to reformacy. Now, we hope that the condition of the economic sector will be better, after restructuralism.

II. Situation of People With Intellectual Disabilities.

In the third millennium was brought a better understanding and awareness concerning the role of the disabled, and has reached the objective of fulfilling some needs for the disabled persons in Indonesia, especially for Intellectual Disability.

Based on the Law No. 4/1997 about People With Disability, mentioned 3 groups of disabilities in Indonesia, there are :

1. the physically handicapped (orthopedic handicapped, hearing impairment and blind).
2. the mentally handicapped or intellectual disability
3. both physically and mentally handicapped.

The estimation the total PWDs in Indonesia nearly 3.11% from the total population 2 million or 6.752.411 people. Based on the ILO estimation that the total number of the Intellectual Disability is 12.8 % compared to the total number PWDs is 527,664.

Based on the classification system of Intellectual Disability from World Health Organization there are mild, moderate, severe, profound and unspecified. We could described :

1. Mild grade- individuals who can require practical skill and functional reading and arithmetic abilities with special education, and who can be guided towards social conformity.
2. Moderate grade - individuals who can learn simple communication, elementary health and safety habits, and simple manual skills, but do not program in functional reading or arithmetic.
3. Severe grade- individuals who can profit from systematic habit training.
4. Profound grade-individuals who may respond to skill training in the use of legs, hands and jaws. They can perform simple task under close supervision in a sheltered workshop.

Based on the Government Regulation No 43/1998 about the Promoting Effort for Social Welfare of Disabled in Indonesia, the ID has right to get the education in total rehabilitation (article 44). In the article 47 mentioned that the ID has the vocational training services like :

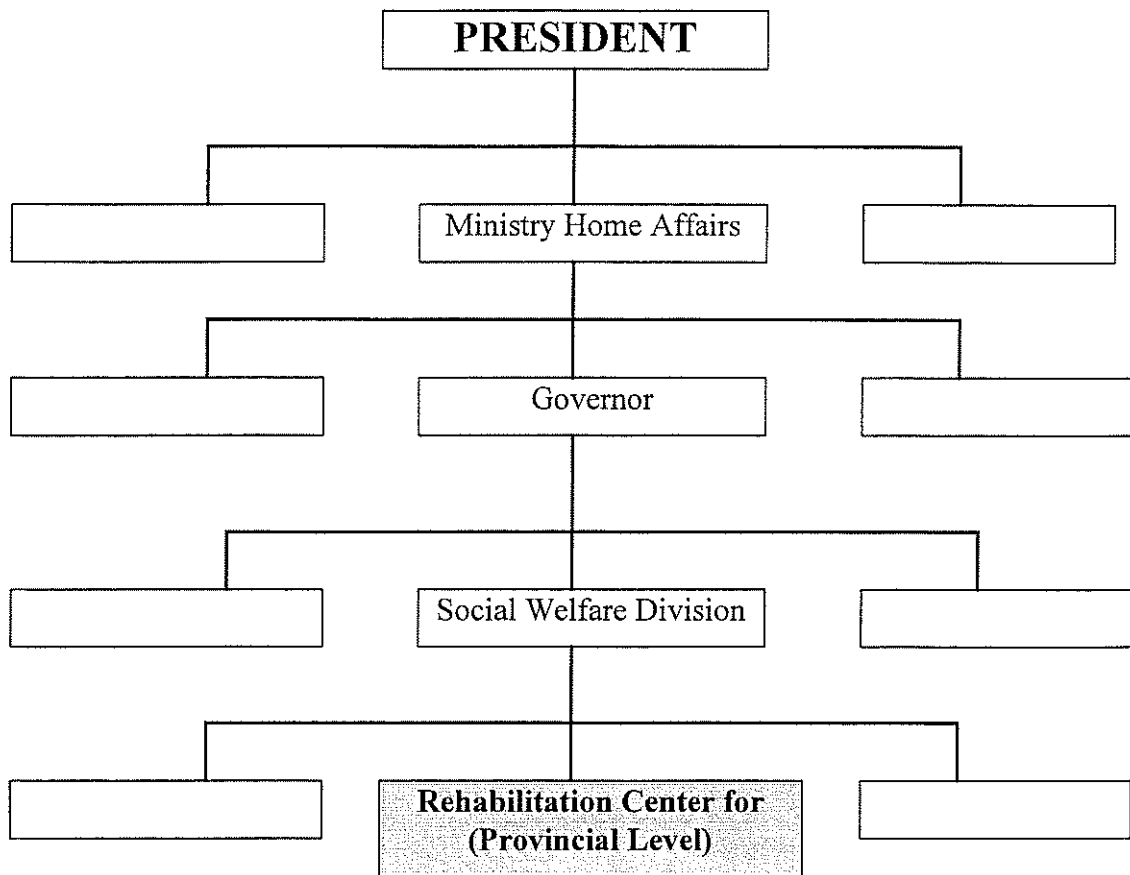
1. vocational assessment
2. vocational guidance
3. vocational training
4. placement
5. follow up

In the article 53, the aim of social assistance :

1. basic need of ID
2. economic productive to get earning money
3. for getting the bison's

Social assistance will be given in financial assistance, material, facilities services and information.

Flow chart of Service Delivery System



Law Concerning with Intellectual Disability

1. The Law No. 4 / 1997 about the People With Disability
2. Government Regulation No 43 / 1998 about the Promoting Effort for Social Welfare to People With Disability.

Community Based Rehabilitation Program:

The Role of NGOs in Indonesia mentioned in the Government Regulation No 43 / 1998 about the Promoting Effort for Social Welfare to People With Disability, Article 66 :

1. To give the suggestion to the Government for helping to make the regulations and policy for PWDs.
2. To provide the accessibility for PWDs
3. To provide the facilities and rehabilitation services to PWDs
4. Joint program between Government and NGOs in sharing experience among the expert
5. To support the financial and material for PWDs
6. To provide opportunity to the all aspect of life
7. To provide the job opportunity to PWDs

NGOs is a voleentury and professional to PWDs Indonesia cooperated with the Government. The strong organization who strong concern for helping the PWDs is Rehabilitation International. JICA, UNDP,ILO, UNIDO, TCDC, OXAM, CHESHIRE etc.

III. Outline of Our Organization

The Comprehensive rehabilitation program for mentally handicapped or intellectual disability is concerned with the development of PWDs, to acquire relevant/ social skills, positive work habits and attitudes the program provide activities which will develop their residual capacities in preparation for gainful employment in Sragen, Central Java, Indonesia has a Provincial Rehabilitation Central for Mentally Retarded we called Panti Rehabilitasi Cacat Mental Raharjo Located in Jalan KH. Agus Salim Phone (0271)

91155, Sragen, Indonesia, We have 140 Clients with categories mild (100) moderate (20) severe (20) There are some services like:

1. Social Adjustment Services:

Assists PWDs achieve adjustment to disability and work towards reintegration to family and community through :

1.1 Case work

1.2 Group work

1.3 Community involvement

2. Medical Services:

Helps the client by determining the capabilities & limitation with regards to daily activities and job performance to improve their condition.

3. Vocational Assessment and Guidance Services

Assists clients in the formulation of his goal through the evaluation of his mental ability, aptitude and skills and by determining his work experiences, vocational and occupational preferences.

4. Vocational Training services

Teaches the PWDs With employable skills and develops their positive values and trait
Major Vocational Courses:

4.1 Tailoring

4.2 Dressmaking / Craft

4.3 Toy making / wood working

4.4 Mini - Agriculture / Poultry

Requirement he has a reasonable good chance of becoming employed after vocational rehabilitation he has a substantial in the form of mental impairment, he is medically fit and he is of working age from 16-45 years once admitted for rehabilitation services, he live in dormitory for free of charge.

My position is head of rehabilitation center we have the responsible in the management of the center both personnel, financial and also the rehabilitation for PWDs especially in Intellectual disabled.

ORGANIZATION CHARGER

