

## 2. Indonesia

Mr. M. Zamhari

# THE PROCESS OF SERVICES ON SOCIAL REHABILITATION FOR PEOPLE WITH INTELECTUAL DISABILITIES IN INDONESIA

By : Mr. M. Zamhari , Indonesian

## I. GENERAL INFORMATION

Indonesian is an archipelago which consists of thousands of islands . There are more than 13.000 islands , and only less than 50 % are inhabited .

The biggest islands, in Indonesia are Kalimantan , Sumatera , Sulawesi , Irian Jaya and Java .

The contry proclaimed its independence on 17<sup>th</sup> of August 1945 . The date, the mounth and the year of the independence is symbolysed by the bird “ Golden Eagle “ , which has 17 feathers on ech wing , 8 feathers on the tail of the bird , and 45 feathers on the neck .

The symbol “ BHINEKA TUNGGAL IKA “ on the bird or unity in diversity means al though Indonesia consists of many differences such as , ethnics , languages , religious , customs , and many others , the are in unity .

The country has 9.8 millions square kilometres , 1.9 millions square kilometres of land area , and 7.9 million square kilometres of ocean .

Since 1951 , Indonesia has 26 provinces , but in 1976 East Timor joined to Indonesia , so there are 27 provinces .

However , in 1999 , after the general election of East Timor which was won by the pro Independence group , East Timor withdrew from Indonesia .

The 26 provinces are devided into 249 regencies , 65 municipalities , 4028 subdistricts and 67.925 villages .

The number of population in Indonesia is 204.4 millions people . The people who live in villages / rural areas is 163.52 millions , and those who live in cities / towns is 40.88 millions .

As a developing country , the average of life for the people is getting higher , for manusia is at the age of 58, and for women is at the age of 65 .

Indonesia is the fifth largest densely populated country in the world .

The birth rate is 5.7 % , the death rate of babies born is 2.34 % , and the death rate of mothers who give birth is 0.08 % , per year .

From the aspects of education , Indonesia still faces problems of illiteracy , it is about 1.6 % from total number of population .

To cope with the problem of education , the government has established school buildings , as follows :

- a. Elementary School = 151.064
- b. Secondary School = 21.157
- c. General / High School = 8.241
- d. Vocational High School = 4.006
- e. University and Academy = 1.391

It is fact that the graduated students ( out put ) become bigger and bigger in every year , and the social and economic condition of the Indonesian people is still under the rate of poverty , it's about 15 % of the total population .

Those conditions lead to the increase of the number of unemployment in Indonesia , which reaches 3.103.704 people , at the age of over 15 years old .

## II. THE CONDITION OF INTELECTUAL DISABILITIES

### A. GENERAL CONDITION

The condition of poor people ( 15 % ) in Indonesia is consideret to crate complexity problems, which has correlation with intelectual disabilities .

According to the data from the cebtre statistic board in Indonesia , the number af disabilities are as follows :

1. Physical Disabilities = 1.659.907 ( 0.85 % )
2. The Blind = 1.757.549 ( 0.90 % )
3. Dumb and Deaf = 605.378 ( 0.31 % )
4. Intelectual Disabilities = 781.133 ( 0.40 % )
5. Heprosy = 1.269.341 ( 0.65 % )

Basically the coueses of the disabilities , such as , intelectual disabilities are categorized into three factors , the are

1. Pre – Natal , caused by heredity , deseases , accident , lack of nutriment and the contaminated drugs / medicine .
2. Natal , caused by hypertension and the impacts of using aids for helping the births .
3. Pos – Natal , Caused by deseases , accident , lack of nutriment and the contaminated drugs / medicine .

Realizing that there are many people with intelectual disabilities in Indonesia , the government and non government foundations have established the central rehabilitations for them , and thre are also many local / regional rehabilitations in some provinces in Indonesia .

After getting rehabilitations , the people with intelectual disabilities who have skill and capabilities can work in companies / factories or in their owen home .

## B. THE PROCESS OF HANDLING THE INTELLECTUAL DISABILITIES

In handling the intellectual disabilities there are some stages that should be followed :

1. Early Approach , Involves :
  - a. Orientation and consultation
  - b. Identification
  - c. Motivasion
  - d. Selection
2. Recepting , Involves
  - a. Regrestation
  - b. Assesment
  - c. Placement on Programmes
3. Guaidance and vocational training , involves
  - a. Fisical and mental guidance
  - b. Social gudance
  - c. Vocational training
4. Re socialisation , involves
  - a. Guidance for readiness to the familly and sociaty
  - b. Guidance for social life
  - c. Guidance for using social assistance
5. Further guidance
  - a. Guidance for sociaties involment
  - b. Guidance for developing for the development of producting
  - c. Guidance for stabilization

All of the stages above are supported by rules of law in Indonesia such as rules of law the disabled no. 4.1997 .

Its in necessary to know that the care of the intelectual disabilities by the society is carried out by FNKCM / NGO with the head office in Jakarta .

### III. THE REHABILITATION CENTRE OF INTELECTUAL DISABILITIES “ KARTINI “ TEMANGGUNG , CENTRAL JAVA INDONESIA , AT GLANCE .

A. Location : Jl. Kartini No. 1-2 Temanggung , Central Java Indonesia  
Phone number : ( 0293 ) 91138 – 91623  
Post Code : 56217

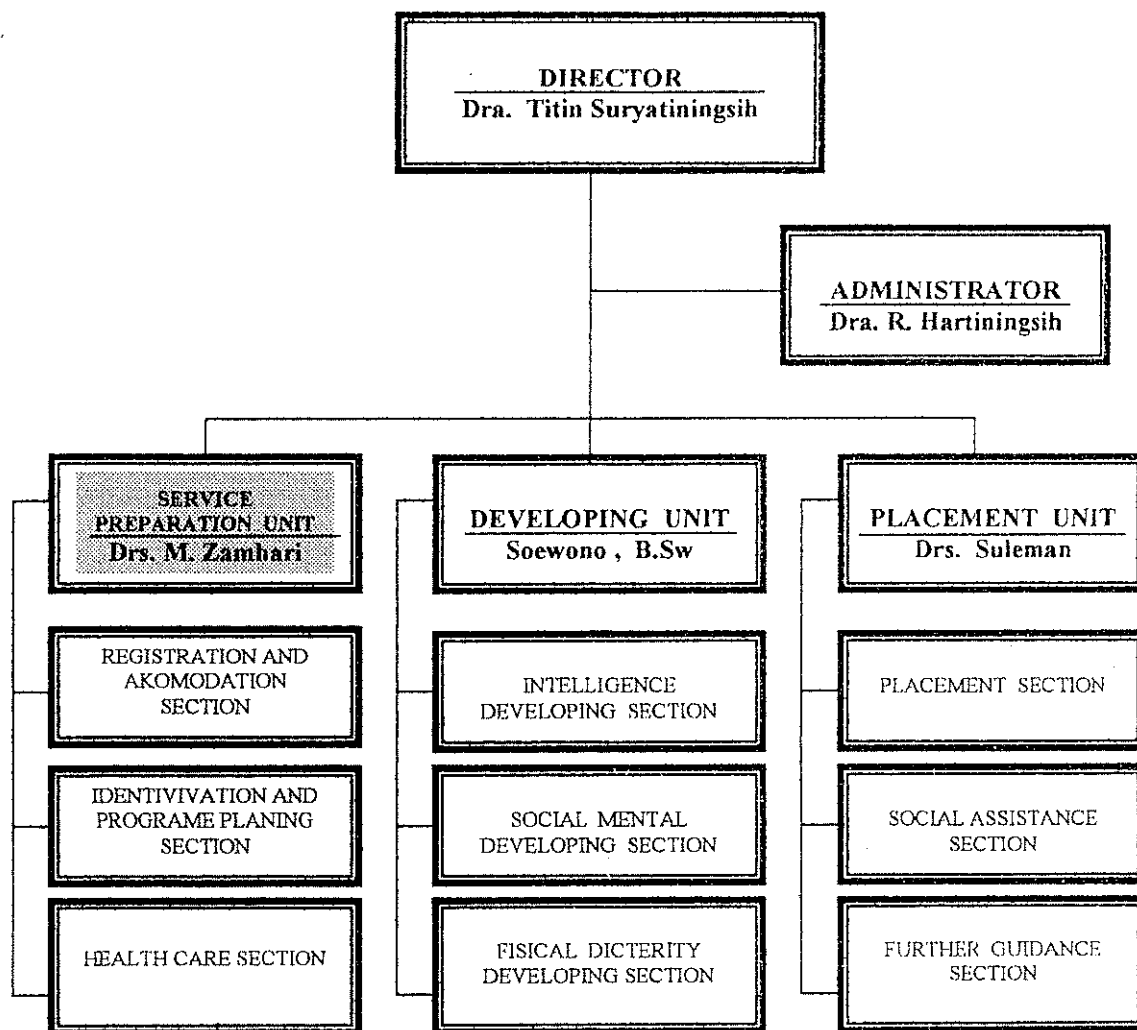
#### B. Mission

The task for caring and developing the intelectual disabilities especially : the Imbisil (trainable) and the Debil ( trainable and educable ) training them to be capable to participate in the community life to gain a properliving and survive .

#### C. Fuction

1. To carry out registration , accomodation , identification and service program
2. Determining diagnosis of the intelectual disabilities , social and health care
3. Developing physical , intelectual , mental and social ability
4. Basic , expertise and enterprising training
5. Performing placement into job opportunities replacement in the family and plection in job employment .
6. Giving further guidance and social protection
7. Programming , data collecting and reporting administration of the Reahabilitation Centre , and Public Relation .

#### D. The Structure Of The Organisation



**The Writer's job is on the unit services preforation with the main duties :**

1. Registration and Acomodation
2. Oservation and Assesment
3. Identifikation and Planing Programe
4. Healt Services
5. Special Therapy