

**GROUP TRAINING COURSE IN  
INTELLECTUAL DISABILITIES**

**(JFY 2000)**

**COURSE NO. : J – 00 – 0064**

**MAY 9 2000 – JULY 23 2000**

**COUNTRY REPORT**  
**(MALAYSIA)**

Submitted By :

Mdm. Tan Gwek Eng  
Assistant Director of Special Education  
Special Education Unit,  
School Management Division  
Terengganu Education Department  
20604 Kuala Terengganu

## COUNTRY REPORT (MALAYSIA)

### I) GENERAL INFORMATION:

1. **Name of Country :** MALAYSIA

Located in the heart of Southeast Asia. Comprises 14 states, of which two – Sabah dan Sarawak – are on Borneo Island. The others, on the Peninsula Malaysia are Perlis, Kedah, Pulau Pinang, Perak, Selangor, Negeri Sembilan, Malacca, Johor, Kelantan, Terengganu, Pahang and the Federal Territory.

2. **Area :**

Peninsula Malaysia	-	131,598 sq. km.
Sarawak	-	124,449 sq. km
Sabah	-	73,711 sq. km

---

329, 758 sq. km.

---

Comparative Area : slightly larger than New Mexico.

3. **Population :** 22.18 millions.(1998); 22.71 (1999); 23.26 (2000 est)

3.1 **Racial Compositions: (1998)**

Malays	10.48 m	47 %
Other Bumiputras or Indegenous Group	2.38 m	10.7%
Chinese	5.51 m	24.8%
Indians	1.56 m	7%
Others	0.704 m	3.2%
Non-Malaysian Citizen	1.55 m	7%

3.2 **Official Religion :** Islam  
**Official Language :** Malay

3.3 **Population Growth Rate :** 2.25 % (1999)

3.4 **Birth Rate :** 24.4 births / 1,000 population

3.5 **Death Rate :** 4.4 deaths / 1,000 population

4. **Life Expectancy :**

Total Population : 72.5 yrs. (1999)

Male : 70 yrs.

Female : 75 yrs.

5. **Infant Mortality Rate** : 7.9 deaths / 1,000 live births (1999)  
**Maternal Mortality Rate** : 28 deaths / 100,000 population  
(0.2 deaths / 1,000 pop.)
6. **Literacy Rate :**  
Age 15 and over ( 1995 est)
- Total Population : 83.5%  
Male : 89.1%  
Female : 78.1%
7. **Unemployment Rate :** 2.8% (1995 est)  
2.6% (1996)  
2.6% (1997)  
4.9% (1998)  
3.0 % (1999)
8. **Poverty Rate** : 50% (1970)  
15% (1990)
9. **Education** :
- (Compulsory)**
- Year 1 to Year 6 ( Age 6 + until 11+) – compulsory  
(Pprimary school level)
- Form 1 to Form 3 ( Age 12+ until 14 +)- compulsory  
(Lower Secondary)
- Form 4 to Form 5 ( Age 15+ until 16 +)- not compulsory  
(Upper Secondary)
- Lower 6 – Upper 6 ( Age 17 + until 18+)- not compulsory  
(Post Secondary & Colleges)
- University Studies  
(Higher Education)

(See Appendix A for Education Fact Sheet – Ministry of Education)

## II) SITUATION OF PEOPLE WITH INTELLECTUAL DISABILITIES

### 1. Early Intervention

The Mahathir Report and the Recommendations of the Cabinet Committee pertaining to the Education of Children with Special Needs formed the basis for policy direction for the translation and operationalisation for programs of children with special needs. The policy direction allows for administration and implementation which include children with special needs below 4 yrs. old.

Early intervention is organized to enhance the development of infants and young children who are at risk of delay either through organic impairment or social disadvantage. The delivery of appropriate early intervention services aims to provide each child, irrespective of the severity of his handicapping condition, with the skills needed to function with maximal independence in as near to a normal community setting as possible.

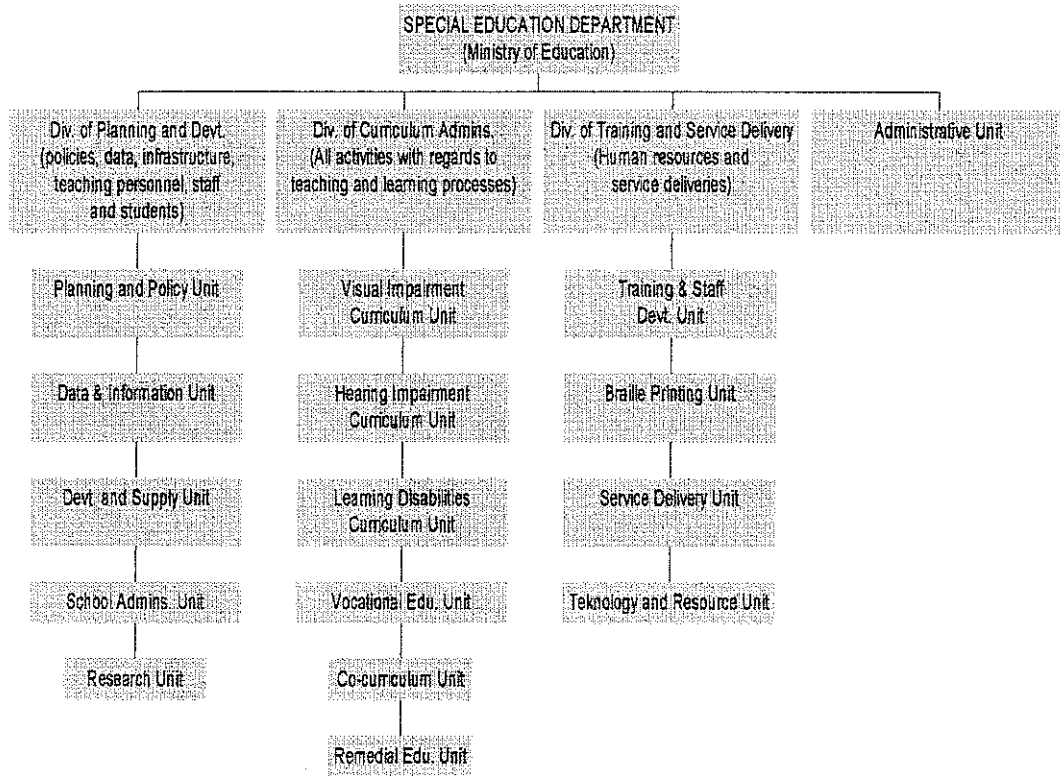
#### 1.1 Aims of Early Intervention Programmes

- to teach developmentally delayed children to achieve their maximum potential
- teach parents necessary skills for reinforcing what teacher/nurse has taught to child at home level
- to prepare developmentally delayed children for pre-school and formal schooling
- to create an awareness and acceptance of children with sp. Needs in parents and community at large
- instilling in parents and professionals the urgency of initiating intervention procedures at earliest age possible
- stimulating parents involvement and formation of Parents Support Group

## 2. **Laws concerned with I.D**

- 2.1 Inter-Ministerial Committee (1981) – comprising of the Ministry of Education, Health, Welfare Services & Labour, demarcated the functions of each Ministry in the education rehabilitation, vocational training and job placements of the handicapped.
- 2.2 The **Ministry of Education** was delegated the responsibility:
  - a) the education of hearing impairment
  - b) the education of visual impairment
  - c) the education of the educable intellectually disabled.
- 2.3 The **Department of Welfare Services** was delegated the responsibility of:
  - a) the education of the physically handicapped
  - b) the moderate, severe and profound intellectually disabled
  - c) the education of the spastics
- 2.4 The **Ministry of National Unity and Social Development** undertakes the registration of the population with special needs (above the schooling age of 19+) and provides financial assistance , launching grants and purchase of specialized equipment for the disadvantaged and the low socio-economic status group. It also implement programs for community-based rehabilitations and assist in job placement in government agencies/factories/private sectors as well as in special programs such as sheltered workshops and land schemes.
- 2.5 The **Ministry of Health** is assigned the responsibility of the early identification and screening of children born at risks. This function is undertaken with the assistance of its medical and para-medical personnel. Thus this function is viewed as being curative and potentially preventable with particular reference to children with special needs.
- 2.6 The policy decision and guidelines provided by the Minister of Education (8 Oct. 1987) regarding the provision of educational services for the programs for Learning Disabilities through-out Malaysia include children who are classified as Intellectually Disabled and behaviour disordered. The term “Learning Disabilities” was preferred because it does not carry the stigma of the handicapping classification.
- 2.7 Children with autistic characteristics which is recognized as a developmental disorder was included under the Ministry of Education’s provision of educational programs in May 29 1993.

3) MINISTRY OF EDUCATION  
 ORGANIZATIONAL CHART OF  
 SPECIAL EDUCATION DEPARTMENT  
 (ACCORDING TO FUNCTIONS)



3.1 **EDUCATION ACT 1996**  
**[Education (Special Education) Regulations 1997]**

**PART I (PRELIMINARY)**

Education (Special Education) Regulations 1997 shall come into force on 1 January 1998.

In these Regulations, unless the context otherwise requires:

- “pupils with special needs” means pupils with visual or hearing impairment or with learning disabilities.
- “special education programme” means
  - a programme which is provided in special schools for pupils with visual impairment or hearing impairment.
  - an integrated programme in regular schools for pupils with visual impairment or hearing impairment or with learning disabilities; and
  - an inclusive education programme for pupils with special needs and who are able to attend normal classes together with normal pupils.

**PART II (SPECIAL EDUCATION)**

For government and government-aided schools, pupils with special needs who are educable \* are eligible to attend the special education programme except for the following pupils:

- physically handicapped pupils with the mental ability to learn like normal pupils; and
- pupils with multiple disabilities or with profound physical handicap or with severe mental retardation.

\* A pupil with special needs is educable if he is able to manage himself without help and is confirmed by a panel consisting of a medical practitioner, an officer from the Ministry of Education and an officer from the Department of Welfare, as capable of undergoing the national educational programme.

In implementing the special education curriculum, teachers may modify the teaching or learning methods or techniques, the time for and sequence of activities, the subjects and the teaching aids in order to achieve the objectives and aims of special education.

Make 30 December 1997  
[KP(PUU)S10075/07/1/Jld.II;PN(pu2)569]

DATO' SRI MOHD NAJIB BIN TUN HAJI ABDUL RAZAK  
Minister of Education

### **3.2 Special Education for the Visually Impaired**

Blind Students – taught Braille

Low Vision - exposed to suitable equipments and large prints

Currently - there are 5 primary and 1 secondary special schools

- 390 students in Special Schools

- 236 students in 20 Integrated programmes

### **3.3 Special Education for the Hearing Impaired**

Students are taught Malaysian Sign Language

(BMKT – Bahasa Melayu Kod Tangan)

Currently - there are 25 primary schools and 2 secondary special schools

- 2412 students in Hearing Impaired Special Schools

- 1600 students in 66 Integrated programmes

- 

### **3.4 Integrated / Inclusive Programmes (Special Education for Intellectual Disabilities)**

1988 – Pilot programme initiated for students with Intellectual Disabilities at primary school level ( Learning Difficulties –LD)\*

1995 – Introduction of ID programmes at Secondary Level

\* LD – inclusive of children categorized as Down’s Syndrome, ADD/ADHD, Microcephaly, Autistic, Behavioural Disorder, Dyslexic and others with mild mental retardation.



### 3.5 Enrolment of ID students in Integrated Programmes

	<u>SCHOOLS</u>	<u>CLASSES</u>	<u>STUDENTS</u>	<u>TEACHERS</u>
<b>PRIMARY</b>	291	796	5733	1257
<b>SECONDARY</b>	108	200	1490	328
<b><u>TOTAL</u></b>	<b><u>399</u></b>	<b><u>996</u></b>	<b><u>7223</u></b>	<b><u>1585</u></b>

### 3.6. Primary and Secondary School Curriculum for ID / LD

- Communication skills
- Social and Environmental skills
- Self-help and functional skills
- Creative and Recreational skills
- Moral / Religious and Social Values

#### 4. Vocational Training

The **Ministry of Education** provides students with hearing impairments the choice to pursue academic education or vocational training during their secondary schooling.

Sheltered workshops and other skill training are being administered by the **Department of Social and Welfare Services**.

Vocational training courses include electrical, electronic, automotive, construction, air conditioning, carpentry, hotel and catering, domestic, hair dressing, dress making, farming, etc.

#### 5. Facilities for the Disabled in Malaysia

##### 5.1 Sports

The Malaysian Paralympic Council - established to encourage sports and recreational activities amongst the disabled. With cooperation of NGO sponsor, the disabled are able to participate in various fields of sports and recreation. The Malaysia Paralympic Games / ASEAN invitation is held every two years. Incentive schemes for disabled sportsmen/women and financial rewards for champion athletes in international games are provided.

##### 5.2 Arts and Cultural Activities

A cultural group for the disabled has been formed to encourage them to be involved in various arts and cultural activities. A fund has been launched to facilitate the group to carry out activities and training.

##### 5.3 Access to public buildings

A committee has been formed to ensure that the disabled have easy access when utilizing public amenities. Access for the disabled to facilities in and outside public buildings has been incorporated in the amendments to the Uniform Building By-Laws 1984.

##### 5.4 Taxation Relief

- Double tax exemption to employers who employ and train disabled workers.
- Extra tax relief to parents with disabled children.
- Tax rebate for purchasing special equipments.
- Personal tax relief of RM 5,000.
- Tax relief of RM 5,000 for the purchase of basic orthopaedic aid.

### 5.5 Contribution to programs for the Disabled.

The Department of Social Welfare Malaysia encourages active participation and contribution of the private / corporate sectors to play major and positive role in the welfare of the disabled and to fulfill the government's hope of creating a caring culture in facing the challenges of Vision 2020 and in line with the National Social Welfare Policy.

## 6. Institutions under Ministry of Welfare Services

6.1	Taman Sinar Harapan (for the Intellectually Disabled)	5 centres in Malaysia
6.2	Cheras Rehabilitation Centre (for the Physically Disabled)	1 centre
6.3	Bangi Industril Training and Rehabilitation Centre for the Disabled (presently in operation for day trainees only)	1 centre
6.4	Bukit Tunku Day Centre (for ex-mental patient)	1 centre
6.5	Community Based Rehabilitation Centre (for Intellectually Disabled)	196 centres

### Services provided :

- care, protection and rehabilitation
- facilities to fulfill physical, social and spiritual needs
- health and safety
- education, guidance and vocational training
- readjustment in the society
- production activities and others related to local community

## 7 Non Governmental Organization (NGO)

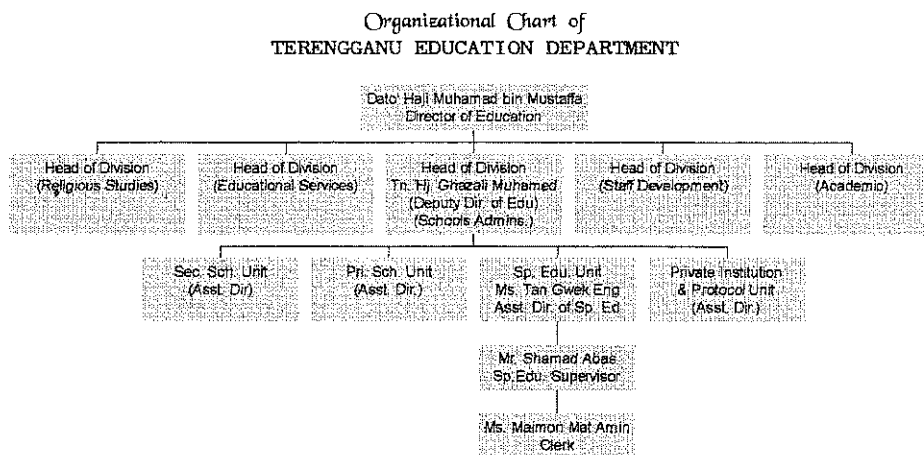
There are about 68 NGOs throughout Malaysia encompassing all categories of disabilities. Listed below are a few NGOs with their addresses.

- |      |   |  |
|------|---|--|
| 7.1  | Semangat Maju Sheltered Workshop<br>(Intellectually Disabled)<br>Tel: 05-5470186                          | 152 Jalan Kuala Kangsar,<br>Batu 3, 30010 Ipoh, Perak.                         |
| 7.2  | Cahaya Hostel<br>(Intellectually Disabled)<br>Tel : 03-2380736  | Infant Jesus Convent,<br>Jalan Bukit Nanas, 50250 Kuala Lumpur.                |
| 7.3  | Seri Sarawak Workshop<br>(all category)<br>Tel : 082-613669   | Batu 12 ½, Jalan Kuching<br>Serian, P.O. Box 945, 93718<br>Kuching, Sarawak.   |
| 7.4  | Bethany Home<br>(all category)<br>Tel: 05-641 1276<br>Fax: 05-641 2633                                    | Simpang Empat, 36400 hutan<br>Melintang, Perak.                                |
| 7.5  | Day Break Centre<br>(all category)<br>Tel : 05-255 8951<br>(3 centres)                                    | 64, Jalan Bandar Timah,<br>30000 Ipoh, Perak.                                  |
| 7.6  | Kiwanis Down's Syndrome<br>Foundation<br>Tel : 03-757 1179<br>Fax: 03-755 9862<br>(5 centres in Malaysia) | 59, Jalan Gasing,<br>46000 Petaling Jaya,<br>Selangor                          |
| 7.7  | Rehabilitation Council for the<br>Disabled<br>Tel: 09-748 1715<br>Fax : 09-744 8112                       | Wisma Insaniyah Tg. Anis,<br>Jalan Bayam, 15200 Kota Bharu,<br>Kelantan        |
| 7.8  | National Society for the Deaf<br>Malaysia<br>Tel: 03-292 5285   | 601-A, Bangunan Loke Yew,<br>Jalan Mahkamah Persekutuan,<br>50050 Kuala Lumpur |
| 7.9  | Penang Cheshire Home<br>(Physical Disabilities)<br>Tel: 04-228 3319                                       | 409 Lebuhr Babington,<br>10450 Pulau Pinang                                    |
| 7.10 | Johor Intellectually Disabled<br>Society<br>Tel: 07-2247243<br>Fax: 07-224 0962                           | Lot 17882, Jalan Gertak Merah,<br>80000 Johor Bahru, Johor                     |

- 7.11 Sarawak Society for the Visually Impaired  
Tel: 082-424046  
Fax : 082-232566  
Jalan Ong Tiang Swee  
P.O. Box 515  
63200 Kuching, Sarawak
- 7.12 Sabah Society of the Deaf  
Tel : 088-213911  
Fax : 088- 316200  
C/o Bukit Lima  
P.O.Box 400  
96007 Sibul, Sarawak
- 7.13 Sabah Society for the Visually Impaired.  
P.P.M. 401, Elopura,  
90000 Sandakan, Sabah
- 7.14 Johor Spastic Society  
Tel: 07-223 5452  
Fax: 07 -223 4029  
138, Jalan Dato Menteri  
80100 Johor Bahru, Johor
- 7.15 Penang Spastic Society  
Tel; 04-657 0160  
Fax: 04-656 3066  
425, Jalan Masjid Negeri  
11600 Pulau Pinang
- 7.16 Terengganu Society of the Deaf  
94 Jalan Batas Baru,  
20300 Kuala Terengganu
- 7.17 Selangor & Federal Territory Spastic Society  
Tel: 03-758 23932  
Fax: 03- 756 7511  
14 Lorong Utara 'A'  
P.O. Box 48  
46700 Petaling Jaya  
Selangor
- 7.18 Selangor and Federal Territory Society for the Intellectually Disabled  
Tel: 03-774 6703  
Fax: 03 -777 9886  
2 Jalan 21/5, Sea Park  
46300 Petaling Jaya, Selangor
- 7.19 Malaysia Society of the Physically Disabled  
Tel: 03-9303202  
Fax: 03-9303203  
220, Jalan Midah Besar, Taman Midah, Cheras,  
56000 Kuala Lumpur
- 7.20 Negeri Sembilan Society for Children with Special Needs  
Tel: 06-761 6538  
4599 Jalan Dato' Abdullah,  
70200 Seremban,  
Negeri Sembilan
- 7.21 Sabah Cheshire Welfare Home  
Tel: 088-222202  
Fax: 088-222202  
Km 5, Jalan Tuaran, Likas,  
88100 Kota Kinabalu  
Sabah
- 7.22 Perak Society for the Intellectually Disabled  
Tel: 05--5470186  
Sekolah Semangat Maju  
Lot 61106 Lorong Tawas 29  
Kampung Tawas,  
30010 Ipoh, Perak

- |      |   |  |
|------|---|--|
| 7.23 | Kota Bharu Spastic Centre<br>Tel: 09-747 9082<br>Fax: 09-744 8112                     | Wisma Insaniyah Tg. Anis<br>Jalan Bayam, 15200 Kelantan.                               |
| 7.24 | Harapan Bakti Day Care Centre<br>Tel : 04-866 9506                                    | Jalan Nipah, 11000 Balik Pulau,<br>Pulau Pinang.                                       |
| 7.25 | Gurney Training Centre for the<br>Visually Impaired<br>Tel: 03-274 1661               | 193, Jalan Sultan Abdul Samad<br>50470 Kuala Lumpur                                    |
| 7.26 | Selangor Cheshire Welfare Home<br>Tel: 03-618 7118<br>Fax: 03-616 3573                | Km 12, Jalan Ipoh<br>68100 Batu Caves, Selangor  |
| 7.27 | Penang St Nicholas Home<br>(Visual Impairment)<br>Tel: 04-365 911<br>Fax: 04-229 0800 | 4 Bagan Jermal Road,<br>10990 Pulau Pinang   |
| 7.28 | Taman Harapan<br>(Visual Impairment)<br>Tel : 09-2972303                              | Pusat Latihan Pertanian Bagi<br>Orang Buta,<br>Taman Harapan<br>28000 Temerloh, Pahang |
| 7.29 | Tasputra Perkim<br>(Physically Disabled)<br>Tel: 03-4516100<br>Fax : 03-4518619       | 3498, Jalan Ampang Hilir 5,<br>Ampang,<br>55000 Kuala Lumpur                           |

### III) OUTLINE OF YOUR ORGANISATION



42

#### 2. **Function**

Special Education Unit provides 4 types of programs for children with special needs ranging from 6 to 19 yrs. old. The programs are:

- 2.1 Special School and Integrated Classes for the Hearing Impaired (Primary and Secondary School Level)
- 2.2 Integrated Classes for the Visually Impaired ( Primary Level only)
- 2.3 Integrated programs for the Learning Disabled (Primary and Secondary School level)
- 2.4 Total and partial inclusion programs for high achiever students with special needs (Primary and Secondary School Level)

**3. Applicants' Responsibilities**

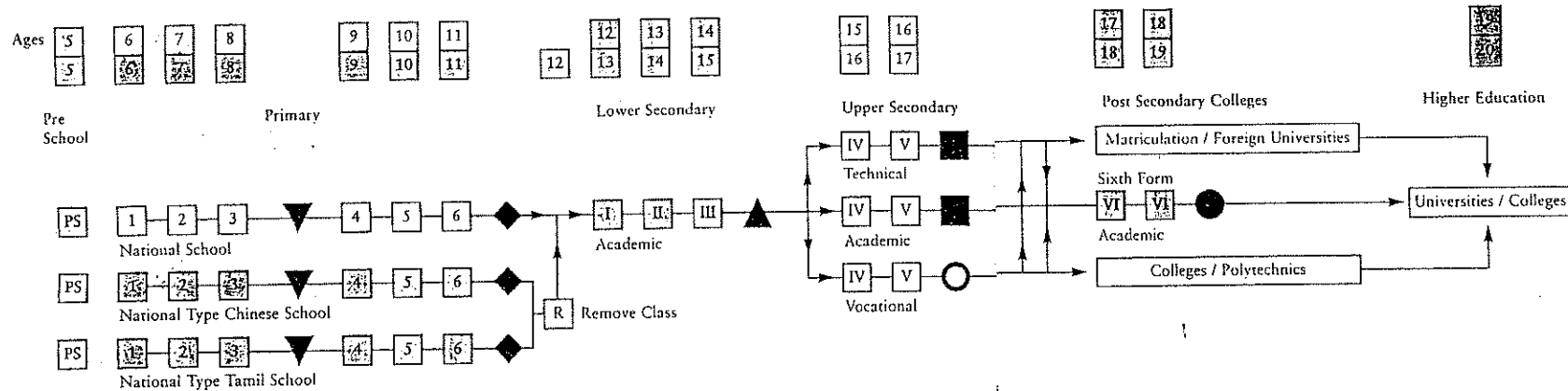
- 3.1 Responsible for planning, organizing and facilitating courses for Special Education teachers in Terengganu State to generate enthusiasm and motivation amongst the them as well as keeping them abreast with latest advancement in special educational field.
- 3.2 Ensuring that Special Education programmes and policies proposed by Ministry and department of education are implemented appropriately at school leve for the benefit of special needs students.
- 3.3 Assessing, registering and placements of special needs students on needs based.
- 3.4 To liaise and coordinate with the Welfare and Social Services Department as well as Non Governmental Organizations with regards to improving services delivery and Special Education programs implemented at State level.
- 3.5 Developing and implementing programs and activities suitable for students with special needs.
- 3.6 To give occasional speeches and lectures to teachers, parents, school administrators and students to instill awareness and compassion for the disadvantaged groups.



# Education Fact Sheet

## APPENDIX A

### The National Education System



#### Assessment in the National Education System

- Continuous School Based Assessment at all levels.
- Common Public Examinations

- ▼ Level One Assessment (PTS)
- ◆ Primary School Achievement Test (UPSR)
- ▲ Lower Secondary Assessment (PMR)
- Malaysia Certificate of Education (SPM)
- Malaysia Certificate of Education (Vocational) (SPMV)
- Malaysia Higher School Certificate (STPM)

#### PRIMARY LEVEL

##### National Schools

- Bahasa Malaysia as the medium of instruction.
- English is a compulsory subject.
- Mandarin, Tamil and indigenous languages are made available.
- Islamic/Moral Education.

##### National-type Schools

- Mandarin or Tamil as medium of instruction.
- Bahasa Malaysia and English are compulsory subjects.
- Islamic/Moral Education.

##### Curriculum Guidelines by the Ministry of Education focus on:

- Mastery of the 3Rs
- Values across the curriculum
- Thinking skills
- Pre-vocational skills
- Basic science concepts
- Art and recreation
- Co-curricular activities

#### SECONDARY LEVEL

##### Academic Schools

- Offer general education and courses in the arts and science streams
- Vocational and technical subjects are incorporated into the curriculum

##### National Religious Schools

- Offer general education, academic subjects
- Compulsory courses in:
  - Arabic Language (Advanced)
  - Islamic Tasawwur
  - Al-Quran and As-Sunnah Education
  - Islamic Syari'ah Education

##### Technical Schools

- Offer general education and technical and vocational based subjects
- Prepare students for entry into technological, vocational and science related courses at the diploma and degree levels

##### Vocational Schools

- Offer general education and basic vocational skills
- Courses are in two streams
  - vocational education stream
  - and skills training stream.

#### POST-SECONDARY LEVEL

##### Matriculation Programmes

- One to two year programme
- Meets requirements for entry to local universities
- Conducted by colleges and some local universities

##### Sijil Tinggi Persekolahan Malaysia (STPM)/A Levels

- Two year programme
- Offer academic, technical and religious subjects
- Conducted in selected schools and colleges

##### Certificate Programme

- One to two year programme
- Training for a vocation
- Offered by polytechnics and colleges

##### Diploma Programmes

- Two to four year programme
- Training for a vocation or further study
- Offered by polytechnics and colleges

#### For further information, please contact:

Secretary-General, Ministry of Education, Malaysia  
Level 7, Block J, Damansara Town Centre, 50604 Kuala Lumpur.  
Tel: 03-255 6827  
Fax: 03-254 3107  
<http://www.moe.gov.my>

Director-General of Education Malaysia, Ministry of Education  
Level 7, Block J, Damansara Town Centre, 50604 Kuala Lumpur.  
Tel: 03-255 6832  
Fax: 03-253 5150  
<http://www.moe.gov.my>

Director, Educational Planning & Research Division, Ministry of Education, Malaysia  
Levels 2, 3 & 5 Block J, Damansara Town Centre, 50604 Kuala Lumpur.  
Tel: 03-258 6848  
Fax: 03-255 4960  
<http://www.moe.gov.my>