

**ANNEX II**

**Intellectual Disabilities**

*( JFY 2001 )*

**Course No. : J - 01 - 00640**

**COUNTRY REPORT**

*Miss Suwattana Sripuenpol*

**Child Mental Health Center  
Department of Mental Health  
Ministry of Public Health**



Table 1 number and percentage of disabled persons by type of disability , whole kingdom.

Type of disability	number ( in thousands )	percentage
intellectually disabled	149.3	14.6
In hearing or communication	177.2	17.3
In seeing	107.5	10.5
In body or movement	402.7	39.4
In mental or behavior (psychosis)	57.0	5.5
multiple disabilities	67.3	6.6
others	63.1	6.1
total	1024.1	100.0

Other interesting studies related to statistics of I.D. were reported in "Health Status of Thai People" (Janpen Chuprapawan : Ministry of Public Health, 2000) as follow :

Department of Mental Health (DMH)'s report on data collecting from psychiatric units in Thailand in the year 1994 , that mental retardation were ranked in the sixth from seven major psychiatric disorders (13.2 per 100,000). In the year 1999 , DMH surveyed mental health status of Thai people in provincial level and found children with delayed development 0.7% , and in the same year DMH found that there were mental retarded persons 1.3 % from epidemic survey of mental disorders ( both studies done with population 15 years of age and above).

Nittaya Kochapakdee, et.al.,( 1998 ) surveyed intelligence of Thai elementary school children 3846 cases and found 44.1 % of these children who had I.Q. below 90 ,among these those who had I.Q. below 70 were 8.5%.

Report on survey of in-school and pre-school disabled persons ( 0-19 years old ) by Institute for Population and Social Research , Mahidol University 1998 founded 16,818 I.D. people or 0.096% of all 0-19 years old population which were the largest group of all the disabled persons who had one type of disability.

However these statistics of I.D. persons in Thailand may varied from definition each study used, sources of data and also different research methodology; but still represent useful informations to use in planning for prevention and providing services for I.D. people.

*Diagnosis of I.D.* : Ministry of Public Health formally uses the ICD10 Classification of Mental Health and Behavioural Disorders as diagnostic guidelines , and I.D. is diagnosed as follows :

The individual has a reduced level of intellectual functioning resulting in diminished ability to adapt to the daily demands of the normal social environment. Associated mental or physical disorders have a major influence on the clinical picture and the use made of any skills. The diagnostic category chosen should therefore be based on global assessments of ability and not on any single area of specific impairment or skill. The I.Q.

levels are provided as a guideline and should be determined from an appropriate standardized and individually administered intelligence tests.

The diagnostic categories from the ICD 10 are as follow :

F70 Mild mental retardation ( IQ 50-69 )

F71 Moderate mental retardation ( IQ 35-49 )

F72 Severe mental retardation ( IQ 20-34 )

F73 Profound mental retardation ( IQ below 20 )

F79 Unspecified mental retardation

(2) Early intervention (E.I.) Early intervention program in Thailand was first started at Rajanukul hospital in 1981. Developmentally delayed infants and children under 4 years of age would be evaluated developmentally and intellectual functionings and adaptive skills. Then parents or caretakers would be provided counseling and education to help them identify strengths and weaknesses of their children, after that EI program for each child would be set up. By demonstrating and training parents (caretakers) to teach their children, parents will gain experiences and understanding to make their own at home. The program is provided once a week and each child will be evaluated every 3 months to follow up the progress.

Other organizations under Department of Mental Health that provide EI service such as Yuwapasart Waithayopatum hospital, Northern Child Development Center – Chiangmai and Nakorn Ratchasima psychiatric hospital in Korat.

Now E.I. are widely used in medical services such as well baby clinics in large general hospitals i.e. Ramathibodi hospital, Chulalongkorn hospital, some private general hospitals and also some large general hospitals in big cities where there are staffs such as nurses and psychologists who are trained to use EI program.

(3) Education : National Statistical Office (1999) reported in "The Status of Thai Disabled Persons" that there were intellectually disabled persons who did not receive education more than those who received education. It was reported in the Health and Welfare survey (1996) that there were 20.2% of intellectually disabled who need government assistance in providing special education.

Educational system in Thailand provides educational services for ID in two systems :

3.1 *Special education schools for I.D.* : Provide education for I.D. children who were classified as mild mental retardation and slow learner ( Borderline M.R.).

3.2 *Inclusive schools* : provide education for children with special needs in the same class as children who are in the mainstream education with the purpose of promoting educational and social integration.

Major governmental organizations which take responsibilities to provide special education schools and inclusive schools are as follow :

(a) Department of General Education

(b) Office of the National Primary Education

(c) Office of Education , Bangkok Metropolitan Administration

Department of General Education are the major sources for special education schools and inclusive schools , there are approximately 70 schools under Division of Education for Disabled Persons and Division of Welfare Education in 52 provinces.

As the result of the National Education Act B.E. 2542 which extends primary education to 12 years and states the equality of the rights to all children regardless any disabilities that one may have, then there are more trends toward providing special education and inclusive learning for disabled children in the future.

(4) Vocational training : National Statistical Office ( 1999) reported that 13.2 % of I.D. persons need skill training assistance.

There are vocational training programs that run by Ministry of Public Health and Ministry of Labor and Social Welfare.

*Ministry of Public Health* : Rajanukul hospital provides vocational training to prepare I.D. youths ( 16 years of age and up) who have adequate adaptive skills to work in simple tasks such as houseworks , office works and handicrafts.

Bangpoon Vocational Rehabilitation Center for young men aged 18 years onwards provides training as Rajanukul hospital with additional program on simple agricultural tasks.

In the year 2001 , DMH plans to settle small shops in psychiatric hospitals through out the country to sell products from mentally disabled persons. Therefore mentally disabled patients will earn some money for their living while training in rehabilitation centers or hospital shelters.

*Ministry of Labor and Social Welfare* : DPW provides 13 vocational training courses in 8 centers through out the country for disabled people which includes I.D. persons.

(5) Employment : Employment among I.D. persons tend to be very low, only 14.2 were employed. National Statistical Office (1999 ) reported that I.D. persons, like most of other disabled persons, did not work . It was reported that 85.5% of I.D. persons had no employment and most of them tend to help in house chores. And 8.7% of I.D. persons need government assistance in providing them for suitable jobs.

(6) Financial assistance : The same report from National statistical Office showed that 4.0 % of persons need government assistance in loan for earning a living.

Financial assistance for I.D. people comes from sources such as

6.1 Non governmental organizations

6.2 Governmental organizations : Medical services under Ministry of Public Health and other governmental medical services provide financial assistance through assisting cards such as Medical Welfare Card for People and Identification card for disabled persons , so they will received financial help whenever they come to contact with medical services.

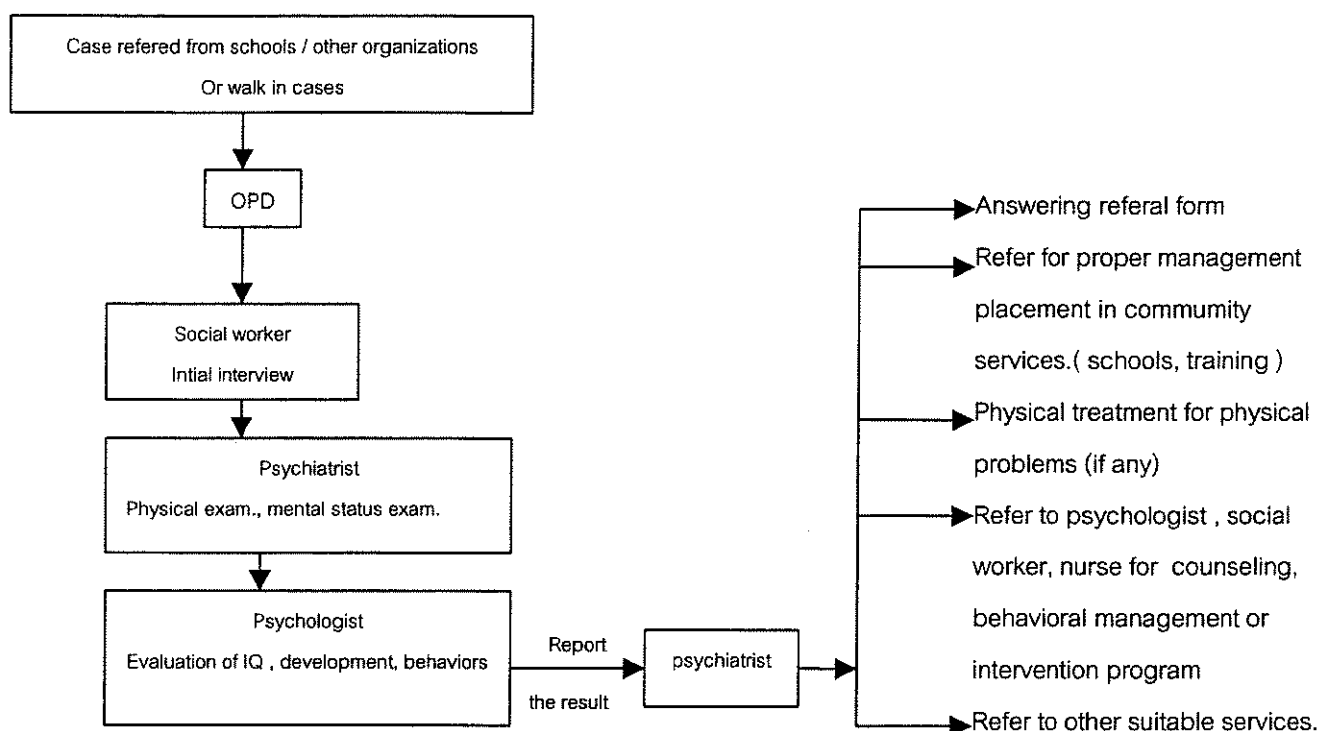
Another resource comes from Department of Public Welfare (DPW) which provides assistance through :

- (a) Registration of people with disabilities
- (b) Subsistent allowance for people with disabilities

I.D. persons who are unemployed or impoverished can receive subsistent allowance 500 bhts. per month after registering with DPW.

## 2. Flow Chart of Service Delivery System

Service delivery system may varies from one medical service to the others. In a child mental health clinic, delivery system will be as follow :



## 3. Laws concerned with I.D.

There are two major laws concerned with I.D. persons :

- (a) The 1991 Rehabilitation of Disabled Persons Act
- (b) The 1999 National ducational Act

## 4. Community-based rehabilitation programs (CBR)

CBR in Thailand by governmental organizations first runned by Ministry of Public Health to help improved disabled people's quality of life in their communities.

Department of Mental Health by Rajanukul hospital started CBR for I.D. persons by conducting " Outreach Program" in cooperation with some public health centers in communities by demonstration of early intervention , giving consultation and education in topics such as mental retardation and delayed development to families in communities.

In the year 2001 , Rajanukul hospital starts a new CBR program at Klong 2 community , Pratum Thani province. This new program is hold upon request from the community to help strengthen their own community, but it is just in the first phase of preparing the community by educating and promoting positive attitudes toward I.D. people.

5. Governmental agencies concerned with I.D.

- (1) Office of the Prime Minister
  - (a) The Office of National Education Commission : Proposing policy and Education planning .
  - (b) The National Youth Bureau : Proposing Youth Policy and planning, research.
- (2) Ministry of Public Health : is responsible for medical services.
  - (a) Department of Mental Health : organizations under DMH which provide services for I.D. and developmental problems.
    - Northern Child Development Center (Chiang Mai)
    - Yuwaprasart Waithayopatum Child Psychiatric Hospital (Samut Prakarn)
    - Nakhon Ratchasima Psychiatric Hospital (Korat)
    - Somdet Chao-praya Hospital (Bangkok)
    - Child Mental Health Center (Bangkok)
    - Rajanukul Hospital (Bangkok)
  - (b) Queen Sirikit National Institute of Child Health.
- (3) Bangkok Metropolitan Administration : provides services such as education and social welfare services in the area of Bangkok metropolitan : Health Support Division , Office of Education , Social Work Division
- (4) Ministry of Labor and Social Welfare : provides cares, services for disabled people.
  - Department of Public Welfare , Office of the Committee on Rehabilitation of Disabled persons : provides welfare and services for people with disabilities , and coordinates with other organizations.
  - Home of Mentally Handicapped Children.
- (5) Ministry of Education : is responsible for providing suitable education.
  - (a) Department of General Education : Special education schools and Inclusive schools under Division of Education for the Disabled and Division of Welfare Education.
  - (b) Office of the National Primary Education Commission.
  - (c) Special Education Center, Rajabhat Suan Dusit Institute

6. Non Governmental Organizations. (NGOs) \*

- (1) Number of Organizations : 15

---

\* Source : Division of Youth Policy and Planning, National Youth Bureau, Lists of Organizations Relating in Children and Youth Development, 2000 : January 2001.

## (2) Name, Address and Function

1. Foundation for Children : 95/24 Moo 6 Soi Kiat Ruam Mit, Budha Monthol sai 4, Sam Phran, Nakorn Pathom 73220. Tel. (662) 814-1481-7 Fax. (662) 814-0369 Email : [children@ffc.or.th](mailto:children@ffc.or.th)  
Function : Provides services, education and vocational training , and scholarship.
2. Foundation for Handicapped Children : 546 Lad Prao 47, Bang Kapi, Bangkok 10310  
Tel. (662) 539-9958  
Function : Provides help in rehabilitation, treatment both physically and mentally, counseling for parents, and training caretakers and related personnels.
- \*\*3. The Foundation for the Welfare of the Mentally Retarded of Thailand. :  
4739 Din Daeng Rd., Bangkok 10400 Tel. (662) 245-3954 Fax (662) 246-8329  
Function : Promoting training services, educational services and Social welfare services for I.D. persons.
4. Friends for All Children Foundation : 25 Soi Ruam Ru-dee 1, Ploen-Jit Pathumwan, Bangkok 10330 Tel. (662) 252-6560 Fax. (662) 650-7811 Email : [ffac@loxinfo.co.th](mailto:ffac@loxinfo.co.th)  
Function : Promoting welfare services for disadvantage children including those who have problems physically and mentally.
- \*\*5. Sataban Saeng Sawang Foundation : 850/34 Sukhumwit 71, Wattana, Bangkok 10110 Tel. (662) 381-5362-3 Fax (662) 771-2399  
Function : Special education services and treatment services for children , and traning for parents and school personnels.
6. Christian Core Foundation for Children with Disabilities : 123/86 River Home Village Soi 8, Pak-Kred, Nonthaburi 11120 Tel. (662) 584-6966 Fax. (662) 584-6966  
Email: [ecdbkk@ksc.th.com](mailto:ecdbkk@ksc.th.com)  
Function : Provides social welfare services, education and social services for handicapped children and their families.
- \*\*7. Project L.I.F.E. Foundation : 2027/73-74 Soi Cha-Roen Krung 77, Wat Phra-ya Krai, Bangkok 10120 Tel.(662) 212-6060 Fax. (662) 212-6062 Email: [projlife@loxinfo.co.th](mailto:projlife@loxinfo.co.th)  
Function : Promoting social welfare services for disadvantaged children include physically and mental retarded children.
8. St. Gerard Rehabilitation Center Khon Kaen : 164/23 Moo 16 Mali Wan Rd., Muang , Khon Kaen 40000 Tel. (043) 237-981 Fax. (043) 236-597 Email: [shdckk@loxinfo.co.th](mailto:shdckk@loxinfo.co.th)  
Function: Provides help to develop quality of life for disabled children, rehabilitation for the disabled in Institutes and in communities



- \*\*9. Association for the Retarded of Thailand : 18 Soi Savat Amnuay Wej , Phadiphat Rd., Bangkok 10400  
Tel. (662) 271-4724 Fax. (662) 628-2714  
Function: Promoting coordinations among organization for I.D. persons,  
promoting vocational rehabilitation, education and social rehabilitation for the I.D.
10. Center for Rehabilitation of the Disabled, Surat Thani Catholic Foundation : 48/2 Moo 1 Dhewa Buri Rd.,  
Muang, Nakorn Sri Thammarat 80130 Tel. (075) 343-089  
Function : Provides rehabilitation physically and mentally, promoting families of the disabled children to  
live together by setting activities that help families earn for living.
11. Redemtorist Vocational School for the Disabled : PO. Box 1 Muang Pattaya, Chon Buri 20260 Tel. (038)  
716-247-9 Fax. (038) 716-543 Email: [rvsd@rvsd.ac.th](mailto:rvsd@rvsd.ac.th)  
Function: provides vocational training for disadvantaged youth including the disabled.
12. Community Based Rehabilitation Programme for the Disabled : Community Based Rehabilitation  
Programme-Loei Province . Chum Sai Rd., Gud Pong, muang, Loei 42000 Tel. (042) 814-645  
function: Provides CBR programe and coordinating with other related organizations in the area.
13. National Council for Child and Youth Development : 618/1 Nikom Mak-kasan Rd., Rajthevi, Bangkok  
10400 Tel. (662) 245-7219 Fax. 245-7219 Email: [NCYD@samart.co.th](mailto:NCYD@samart.co.th)  
Function : Center for coordinating with NGOs in Policy and Planning, and Programs for Children  
and Youth development. Promotion network for protection of disabled children's insist .
- \*\*14. Duang Prateep Foundation : 34 Lock 6 Ard Narong Rd., Klong Toey Bangkok 10110 Tel. (662)  
671-4045 Fax. (662) 349-5254 Email: [dprf@internet.ksc.net.th](mailto:dprf@internet.ksc.net.th)  
Function: Provides education services for impoverish children who live in overcrowded areas  
include children who are developmental delay.
15. Organizational Network for the Disabled : Foundation for the Disabled 78/11 Tiwanon Rd., Pak-kred,  
Nonthaburi 11120 Tel. (662)583-8434 Fax. (662) 583-8434  
Function : Promoting and facilitating network organizations in working for the disabled, proposing data  
and problems among the disabled to the public and proposing strategies to solve the problems to  
national level organizations.

Note : \*\* NGOs with specific purpose in helping I.D. persons or with special education program for developmental delayed  
/ mental retarded children.

Others with general purpose of providing help and support to disabled persons which include I.D. persons.

#### 7. Activities of International Organizations

Some activities of the international organizations in relation with NGOs and Ministry of Public Health  
are as follow :

- \*\*9. Association for the Retarded of Thailand : 18 Soi Savat Amnuay Wej , Phadiphat Rd., Bangkok 10400  
Tel. (662) 271-4724 Fax. (662) 628-2714  
Function: Promoting coordinations among organization for I.D. persons,  
promoting vocational rehabilitation, education and social rehabilitation for the I.D.
10. Center for Rehabilitation of the Disabled, Surat Thani Catholic Foundation : 48/2 Moo 1 Dhewa Buri Rd.,  
Muang, Nakorn Sri Thammarat 80130 Tel. (075) 343-089  
Function : Provides rehabilitation physically and mentally, promoting families of the disabled children to  
live together by setting activities that help families earn for living.
11. Redemptorist Vocational School for the Disabled : PO. Box 1 Muang Pattaya, Chon Buri 20260 Tel. (038)  
716-247-9 Fax. (038) 716-543 Email: [rvsd@rvsd.ac.th](mailto:rvsd@rvsd.ac.th)  
Function: provides vocational training for disadvantaged youth including the disabled.
12. Community Based Rehabilitation Programme for the Disabled : Community Based Rehabilitation  
Programme-Loei Province . Chum Sai Rd., Gud Pong, muang, Loei 42000 Tel. (042) 814-645  
function: Provides CBR programe and coordinating with other related organizations in the area.
13. National Council for Child and Youth Development : 618/1 Nikom Mak-kasan Rd., Rajthevi, Bangkok  
10400 Tel. (662) 245-7219 Fax. 245-7219 Email: [NCYD@samarat.co.th](mailto:NCYD@samarat.co.th)  
Function : Center for coordinating with NGOs in Policy and Planning, and Programs for Children  
and Youth development. Promotion network for protection of disabled children's insist .
- \*\*14. Duang Prateep Foundation : 34 Lock 6 Ard Narong Rd., Klong Toey Bangkok 10110 Tel. (662)  
671-4045 Fax. (662) 349-5254 Email: [dprf@internet.ksc.net.th](mailto:dprf@internet.ksc.net.th)  
Function: Provides education services for impoverish children who live in overcrowded areas  
include children who are developmental delay.
15. Organizational Network for the Disabled : Foundation for the Disabled 78/11 Tiwanon Rd., Pak-kred,  
Nonthaburi 11120 Tel. (662)583-8434 Fax. (662) 583-8434  
Function : Promoting and facilitating network organizations in working for the disabled, proposing data  
and problems among the disabled to the public and proposing strategies to solve the problems to  
national level organizations.

Note : \*\* NGOs with specific purpose in helping I.D. persons or with special education program for developmental delayed  
/ mental retarded children.

Others with general purpose of providing help and support to disabled persons which include I.D. persons.

#### 7. Activities of International Organizations

Some activities of the international organizations in relation with NGOs and Ministry of Public Health  
are as follow :

- Japan International Cooperation Agency grants scholarship for I.D. training program to both NGOs and Gos.
- Institute Cardiff , University of Wales : Cooperation program for Rajanukul hospital in developing technical, experience and training for staffs to become trainers in the area of taking I.D. children.
- University of Macquarie , Australia : Cooperation program in early intervention training course for DMH personnels.

### III Outline of Child Mental Health Center

1. **Function** : Child Mental Health Center ( CMHC) is a governmental organization under the administration of Department of Mental Health (DMH) established since 1953 , and this year the organization will be promoted to be " Institute of Child and Adolescent Mental Health".

#### *Responsibilities of CMHC*

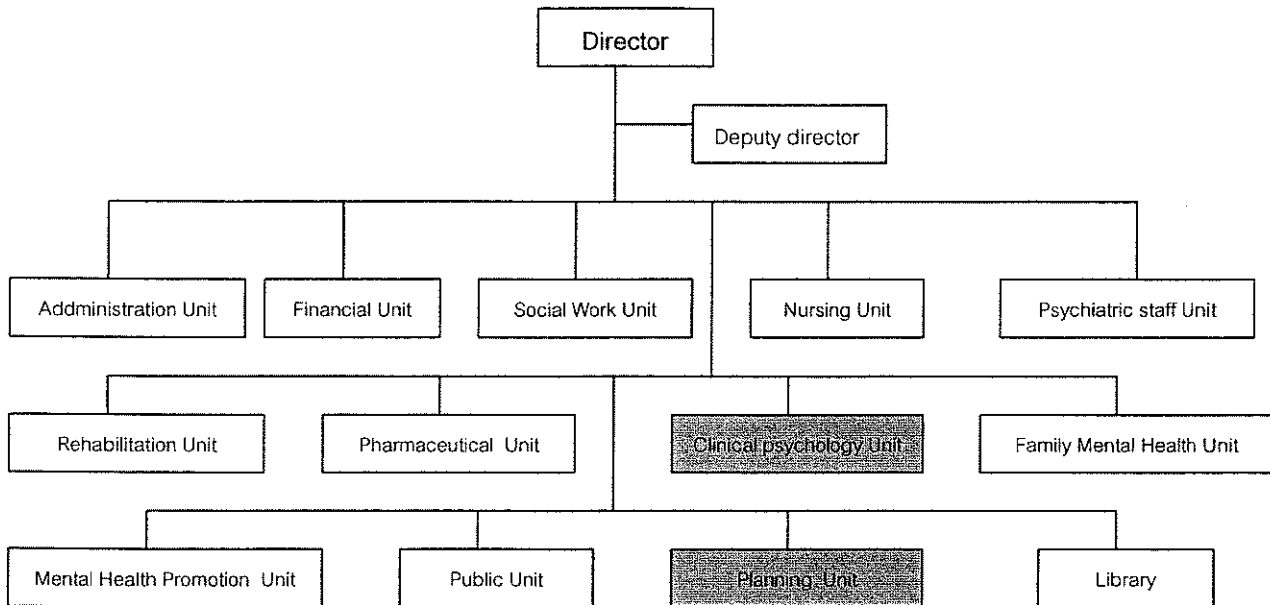
1. To develop complete services focusing on promotion, prevention , treatment and rehabilitation for children and adolescents with psychiatric and mental health problems.
2. To develop model of child mental health services and facilitate to set up service system including promote , support and transfer knowledges in child psychiatry , child and adolescent mental health to other related governmental organization.
3. To develop research projects on child and adolescent mental health , family mental health and school mental health in order to be significant information center in these fields.
4. Center for teaching and training for professional staffs in child psychiatry , clinical psychology , social work , psychiatric nursing , and child and adolescent mental health .

On the occasion that CMHC is promoted to be Institute of Child and Adolescent Mental Health, a major responsibility in the upcoming year required from DMH, is to help setting up child and adolescent unit in every psychiatric hospitals under DMH . So DMH could widely spread child and adolescent mental health services to make more coverage to rural areas, especially services for major problems usually find in children and adolescents such as developmental problems, mental retardation and learning problems.

#### *Services* : - Out patient service

- Day care service for normal children and children with developmental disorders.
- Mental health promotion and prevention through mental health education and training for parents , and school mental health program for teachers and school administrators.
- telephone counseling

## 2. Organization chart



\* My responsibilities are in Clinical psychology unit and Planning unit

## 3. My responsibilities :

As a psychologist staff

1. To provide psychological assessment both testing and non testing such as intelligent tests , personality tests , interviewing , and play technique.
2. To provide psychological treatments from either individual and group treatments including individual counseling, group counseling for parents and children with learning difficulties , mental retardation and developmental problems.
3. To coordinate with schools , resources and other services for proper management and cooperation .
4. Chief of the project " Group activities to enhance self esteem for children with learning difficulties" a pilot project for elementary school children aims to be use in primary school by teachers.
5. A staff in school mental health project : a project to develop mental health education course for teachers and develop manuals for mental health in school.
6. Lecturer in " Parental School" a course for parents to understand adolescent development.
7. To advise students in clinical psychology practicum in psychological assessments, basic counseling and guidance for children and parents.

As chief of Planning unit :

1. To develop an annual organization plan , services and activities by coordinating with each unit , monitoring and following up the results.
  2. To provide related data on services , activities from monitoring and following up results of organization's plan to administrators ,analyse the results and propose organization action plan.
  3. To coordinate with other divisions within DMH and other related agencies by providing and communicating any pertinent report of planning enforcement.
-