



***A Country Report of Nepal***  
***For Training Course on Intellectual Disability In***  
***Communiticity Activity 2008***

***Mohan Prasad Maraseni***

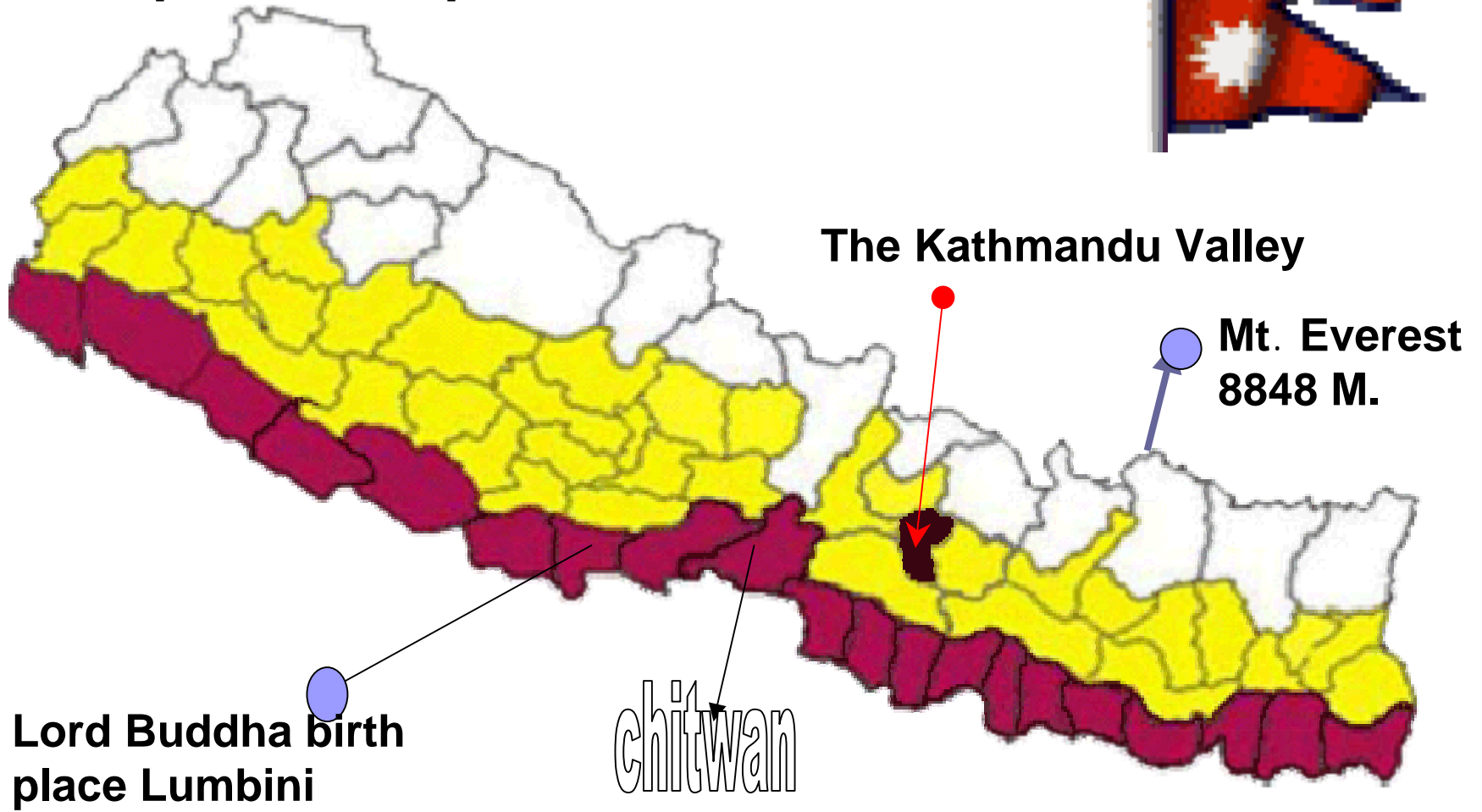
***Planning, Monitoring and Administrative Officer***

***Office of The District Development Committee, Chitwan***

***Ministry of Local Development,***

***Government of Nepal***

# Map of Nepal



# Country Profile



- Name of Country : Nepal
- Area - 147,181 Sq.km.
- Location – South Asia (East, West and South is India and North is Tibet, China. It's Land locked country.)
- 885 km long and 193 km wide (average)
- Altitude - 70 - 8848 m. from sea level.
- 75 Districts, 58 Municipalities & 3915 VDCs (village development committees)
- Capital – Kathmandu, 1330m altitude, 351 sq. km area, valley
- Annual rainfall - 1600 mm (variable)

# Country Profile con....



- Population 23.15 Millions(Population censues 2001)
  - Male :1563921 (49.95%)
  - Female :1587502 (50.05%)
- Population 26.4 Millions (estimation population of 2007)
- Population growth rate 2.25%
- Density of population 157 nos./sq Km.
- Urban Population 14%(growth rate 7%)
- Population of Below Poverty Level : 30.8%
- Ethnic group: More then 100 groups.
- National language: Nepali
- Religion: Hindus(80.62%)
  - Second largest religion: Buddhism(10.74%)
- Historical Place: Lord Buddha Birth place Lumbini.

*Source :Central Bureau of Statistics*

# Country Profile



**Life expectancy** :60.4 Average in year

Male :60.1 year

Female :60.7 year

**Infant mortality rate** : 76.2 persons in 1000 live birth

**Maternal Mortality rate** : 539 per 100000 live birth

**Literacy rate** : 65.5%

**Unemployment Rate** 3.8%( above 15 year population)

Political system : Monarchism/Multiparti Democracy

# Country Profile



Disable people in nepal

- 8 % Disable

Type Of Disable

- Physical disable
- Deaf (less hearing)
- Dumb (no hearing / no speaking)
- Blindness
- Mental slowness

# Destination of Tourism



Nepal occupying only 0.1% of the landmass of the Earth is home to:

- 8 of the world's highest peaks out of 14 including Mt. Everest and Kanchanjanga.
- 2% of the flowering plants in the world
- 8% of the world population of Birds more than 848 species
- 4% of mammals on Earth
- 11% of the world's families of Butterflies more than 500 species
- 600 indigenous Plant families
- 319 species of exotic Orchids
- 10 UNESCO Natural world heritage sites and 7 within 12 Kilometer area
- 20% protected of total land area



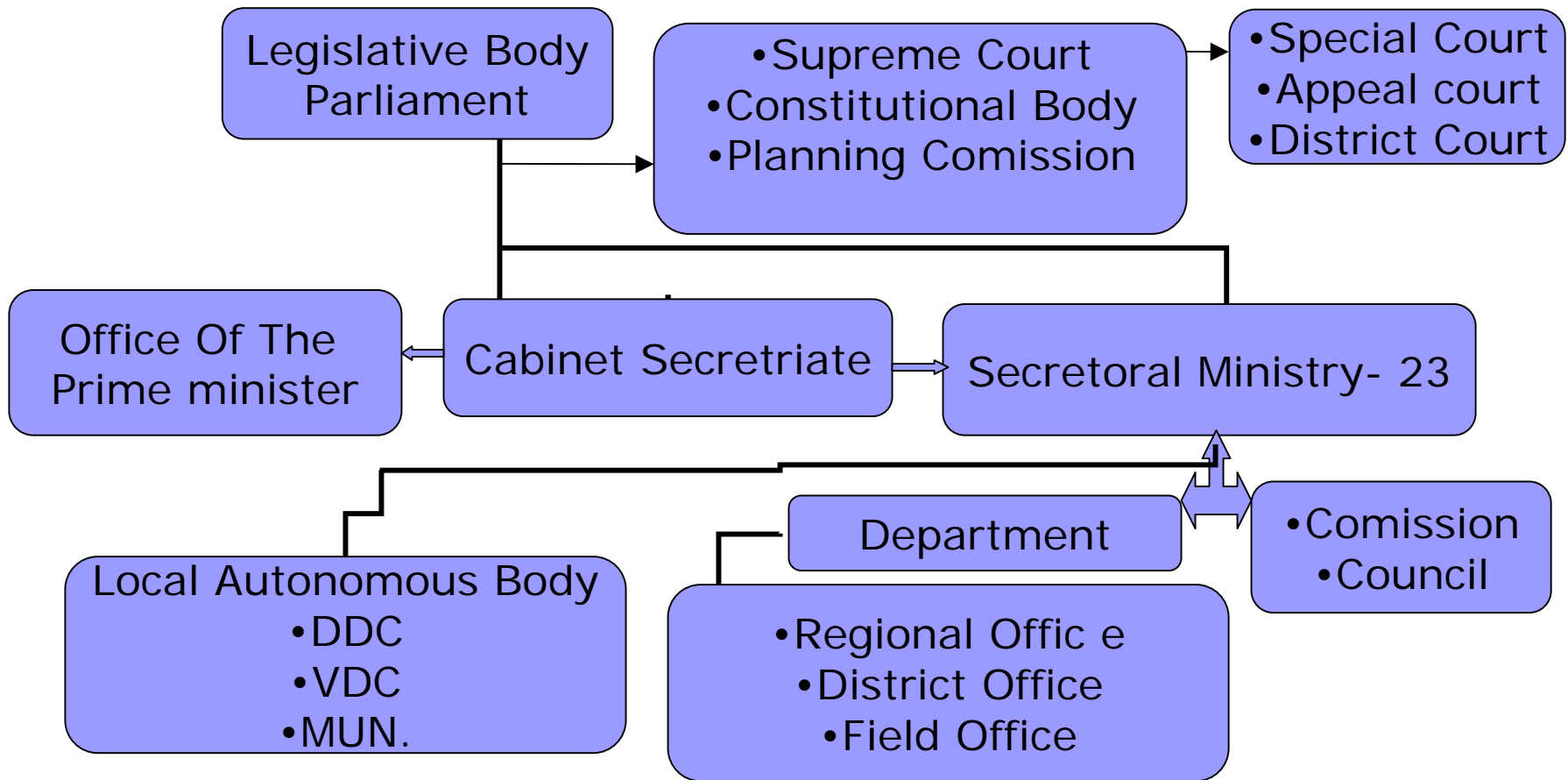
# Macroeconomic condition

- ***Aegro Base economics***
- ***Perspective of economics Development :***
  - Tourism*
  - Hydropower*
  - herbal plant*
- ***GDP Growth rate and Per capita income (based on 2000/01 prices) :***

Fiscal Year	GDP Growth rate	Per capita income US\$
2006/07	2.3	383P



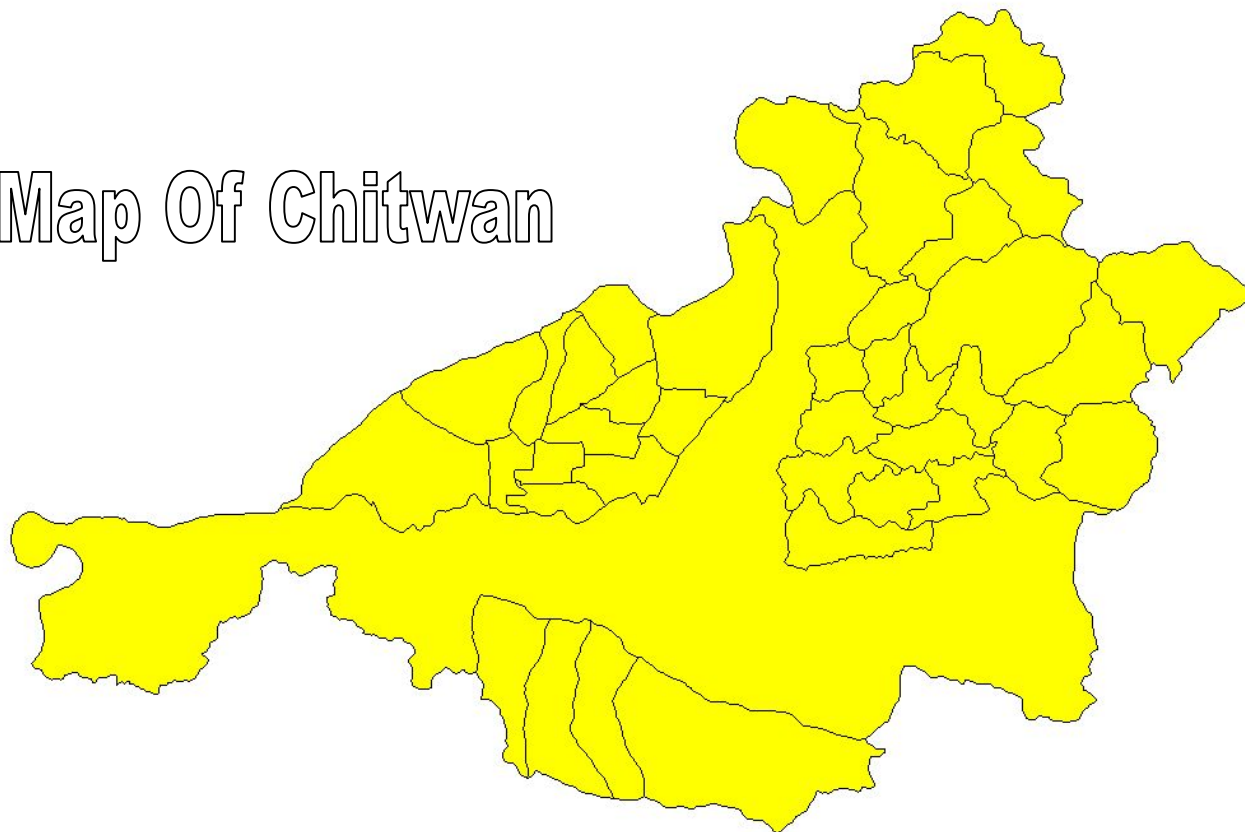
# Organization Structure In Nepal



# District Profile



Map Of Chitwan



# District Profile



- Area - 2238.39 sq. Km.
- Location – Central Region
- 2 Municipalities & 36 VDCs (village development committees)
- Population 468699.
  - male :239036(51%)
  - Female :229662(49%)
- Teaching Institution :512 (governmental)
- literacy rate : 71.1%.
- Cast and Ethnic Group :more than 13
- Disable people in chitwan : 9437

# District Profile



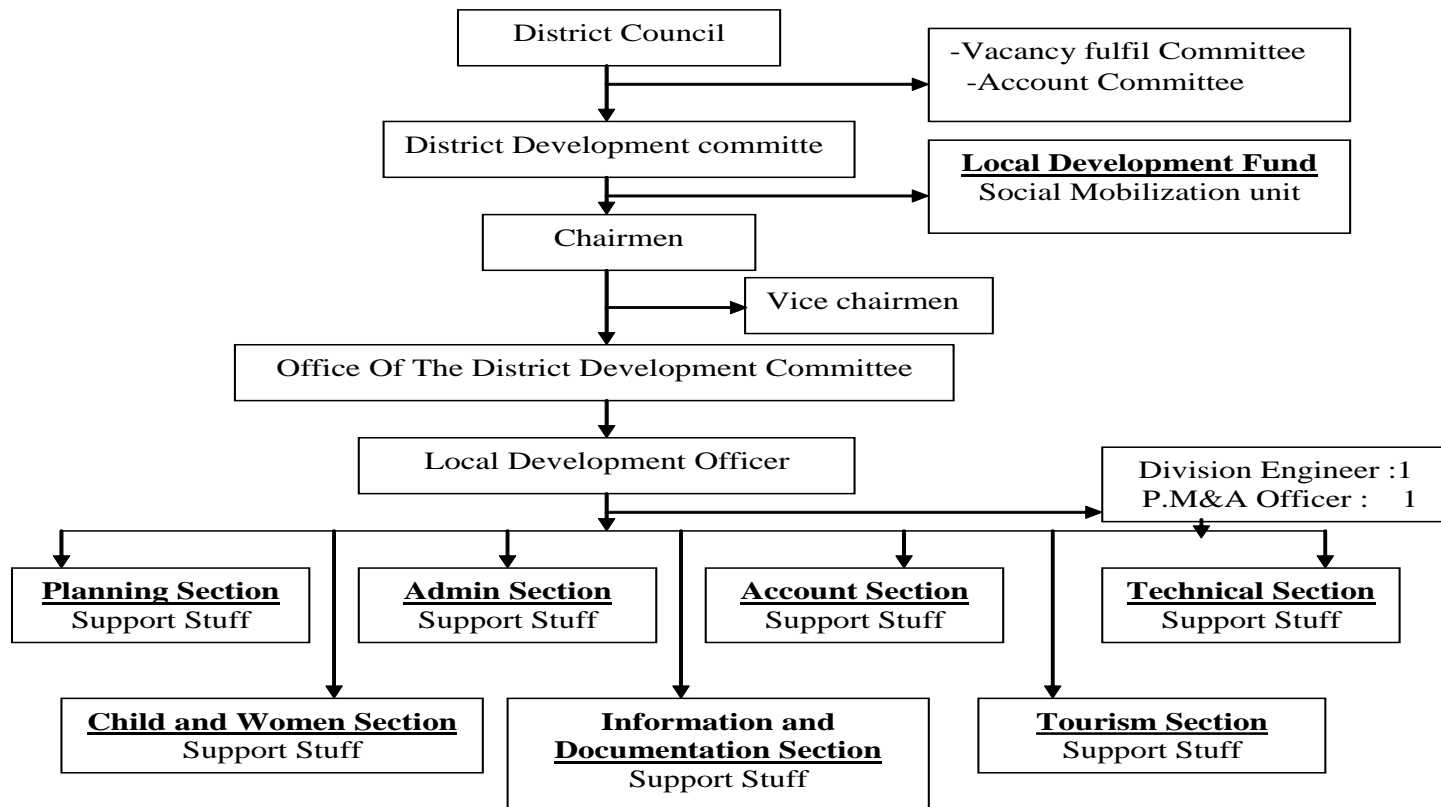
## Organizational Outline / Office of the District Development Committee Chitwan

Decentralization has been accepted as a main means of enhancing good governance; a process of administrative, political, social, economic and development works, and a strategy for promoting peoples participation and people's empowerment in Nepal. The government has made the provision of promoting more and more participation of the people in the country's governance system by adopting the autonomous system of governance. Moreover, provision has been made for the formation of local bodies based on decentralization and devolution to make services and facilities available to the people at the local level and for the institutional development of democracy from the local level. Similarly, it has been spelled out that to enhance the capacity of the local bodies for making balanced, justifiable and equitable resource allocation and mobilization and the distribution of the outcomes of development . While allocating and mobilizing revenues, special attention have given to the overall upliftment of backward groups and communities in terms of social and economic aspects.

# Outline of Organization



## Organizational Structure



# Vision And Strategy Of DDC- Chitwan



## Vision

The District Development Committee had been made 5 year periodic plan in 2000 AD. The term of the plan have already passed. yet to be made another periodic plan due to the political instability . The first five year plan had made long term vision as "***Beautiful, Prosperous and Equitable Chitwan***". likewise, this plan had set some guiding principle as district development aspect .

- sustainable development,
- participatory planning and working system,
- gender balance,
- good governance ,
- decentralization and human right.

The vision, mission and guiding principle are still active . DDC Chitwan has been followup and applying these vision, as a working strategy on development perspective .



## Strategy

- The role of DDC has to be establish as a policy maker, coordinator and facilitator .
- The component of the good governance system ( transparency, accountability, responsibility, working efficiency , rule of law and participatory approach) has to be use and integrated to the planning, implementation and service providing system.
- To emphasis the empowerment or advancement of women,Dalits, indigenous ethnic tribes, those who belong to a class which is economically , socially or culturally bacaward, or children, disabled of those who are physically or mentally incapacitated, through social mobilization.
- The concerning body has to be made capable providing knowledge, skill, entrepenureship for the use and mobilization of local resource .
-



- The monitoring system has to be made institutionalise, strength and regularity in planning and implementation process.
- To emphasis the formation Community base organization, cooperative, women and child group under village development programme and has to be given special attention for the institutional and capacity development of local NGOs and CBOs.
- The policy has to be adopted participatory planning and implementation process and to emphasis the use of labour based technique.



# Major programme , covered areas and targated population of DDC



## Regular work Defined By LSGA :

- Agriculture,
- rural drinking water and habitation development,
- hydropower development,
- infrastcture development,
- land reforms and land management ,
- ***development of women and disable and helpless people,***
- forest and environment,
- education and sports,
- wages of labour,
- irrigation and soil erosion and river control,
- information and communication,
- language and culture,
- cottage industry, health service and tourism.



## Targated Programme :

- poverty alleviation programme,
  - skill/ capacity development,
  - technology transfer,
  - to provide seed/capital money,
  - material support,
- income generation through entrepreneur development
- social and welfare programme ( Decentralized Action for child and women, Local Development Fund/village development programme) programme focus area are as, to upliftment and empowerment of women, children, dalit, disable person, down trodden , socially and economically backward community. advocacy of women and child right, women and child nutrition, schooling, health, drinking water and sanitation, minimize domestic crime, paralegal and social inclusion etc. such targated program at least 30% targated population have benifated throughout the district.

# Role and Responsibility of Planning, Monitoring and Administrative Officer :



- To help and assist the DDC, Line agency, and supporting staff for planning process regarding with participatory and inclusive method .
- To prepare the district development plan (pereodic & Yearly) as per the basis of national prioarity and to submit it with local development officer .
- To recomend the problem solving plan having supervision, monitoring and eveluation approved plan and programme.
- To prepare the resource management plan(man,money and materials) and submit for approved .
- To collect the Village/ Urban level statistics and keep it up dated.
- To help the DDC, Line agency, Local NGO and User Committee for the implementation of approved plan.
- To carrying on necessary role, to collect the people participation and implementation of project and programme.

Cont..



- Supervision and evaluation of the supporting staff and to recommend the reward and punishment.
- ongoing and final monitor / supervision of Development work / programme regularly.
- drafting the various guidelines and by-laws submit to it on DDC/ Council for approved .
- to perform as focal person of the Decentralization action for child and women and Participatory District Development Programme under supporting UNICEF & UNDP respectively
- to carry such other function under the direction of Local Development Officer.

# Legal Provision about Disable Issue



## **Constitutional provision :**

- making of special provision by law for the protection, empowerment or advancement of women, Dalits, indigenous ethnic tribes, madhesi or farmers, labours or those who belong to a class which is economically , socially or culturally backward, or children, the aged, disabled or those who are physically or mentally incapacitated.
- Women, labourers, the aged, disabled as well as incapacitated and helpless citizen shall have the right to social security as provided for in law.
- Helpless, orphaned or mentally retarded children, children who are victims of conflict or displaced and street children at risk shall have the right to receive special privileges from the state to ensure their secure future.

Cont.....



- To make arrangement for appropriate relief, recognition and rehabilitation for the families of those who died and for persons disabled and made helpless through injury caused during the course of the armed conflict.
- To enable madhesi, dalits, indigenous ethnic groups, women, labourers, farmers, the physically impaired, disadvantaged class and disadvantaged region to participate in all organs of the state structure on the basis of proportional inclusion.
- The state shall pursue a policy of making special provision for social security for the protection and welfare of single women, orphans, children, the helpless, the aged, disabled, incapacitated persons and tribes on the verge of extinction.
- State shall pursue a policy of making special provision on the basis of positive discrimination for the minorities, landless, squatters bonded labour, persons with disability, backward communities and sections, and the victims of conflict, including women dalits, indigenous tribes, madhesis and muslim.

Cont....



## Laws and Regulation :

- **Disable protection or welfare act 2039** : this act has assured the following objective about the favour of disable .(Right to equal, arrangement of education and training, arrangement of health and medical remedy, arrangement of employment and other benefit.)
- **Education Act 2028** : this act has assured the following objective about the favour of disable .(provision of special education, scholarship management)
- **Local self Government act 2055** : this act has assured the following objective about the favour of disable .(protection, capacity enhancement, conducting livelihood programme, documentation etc,)
- **Child Act 2048** this act has assured the following objective about the favour of disable child.(establishment of childcare and slow minded center)
- **Vehicle or Transportation Management Act 2049** : this act has assured the following objective about the favour of disable .(to keep reserve the seat , not to refuse to take passenger, penalty and compensation for a broken limb.)
- **Social welfare Act 2039** : this act has assured the following objective about the favour of disable .(to conduct the special and targeted programme for disable)

# planning approach and prospective about disabilities



Interim plan FY 2064/65-2066/067 :

## Long Term Vision

- The long term vision is to protect and promote the fundamental rights of all kinds of physically disabled people, and to help them develop their inherent talents so that they all become able citizens.

## Objective

- To create persons with disability-friendly environment, free of obstacles, and enabling them to access to all possible facilities for a just, dignified and independent livelihood.

## Strategies

- Build legal, institutional, physical and economic infrastructure.
- Empower persons with disability economically, socially and politically.
- Promote coordination and collaboration among government, non-government and development partners.
- Implement programs focused to the rights and needs of persons with disability.

Cont.....



# Implementation, Monitoring, and Evaluation Of Disable Related Programme



Empowerment of persons with disability related activities are being carried out by a unit of Ministry of Women, Children and Social Welfare (MOWCSW) at centre level. At the district level, the DDC and the Empowerment Of Persons with Disability Development Committee (EHPDC) will implement the programs. Women Development Office will monitor and evaluate the programs.

# National Policy and Work Plan 2006, about disabilities



## Focus area of the work plan is:

- to formulate the national level coordination committee and extended it district level.
- to formulate and change the act and regulation accordingly to time being.
- to develop strong communication mechanism and keep continue research work about disabilities.
- awerness and advocacy.
- training and employment,
- access : public place, property
- communication: to increase accessibility of communication system.
- transportation : reserve, special discount
- sports,religious and recreament activity, cont....



- education, quality education for disable child.
- to conduct preventing measure ,
- access remedical service to remote and village area ,
- rehabilitation, empowerment and poverty alevation.
- to provide the supporting materials.
- selfreliance and motivated institution
- women and disability
- international and regional cooperation.

## Support organization about disability in Chitwan(Government)



- Office of The District Development Committee,
- District Administration Office/ Child welfare Committee.
- District Education Office,
- Women Development Office (Focal Point of Gov. in District),
- Municipal Office,
- Village Development Committee,
- Government Hospital,

## Support organization about disability in Chitwan(Non-Government)

More than 400 Local NGOs are registered in chitwan District, in which only five local NGOs are conduct by disable people and these are active then other about disability issue.

# Training and Annual Budget



## Training :

Disable people are getting various training and skill development programme, but very few persons become use in practice.

## Budget :

The central Government allocate the budget around Rs.20.5 million across the country for development programme and livelihood allowance. the DDC allocate anually around Rs.1million for enhancement programme.

## Means of subsistence ( Livelihood allowances)



The Central Government allocate the budget for disable people as Livelihood allowances. Olny 100 disable persons in each district have got 200 Rupees at monthly. A very few District Development committee also provided such allowance its own resources.

## Support organization about disability in Nepal (LNGO/INGO)



- Association for the Welfare of the Mentally Retarded
- Disabled Peoples' International
- Handicap International
- Helen Keller International
- Hilton/Perkins Program
- Independent Living Institute
- International Council for Education of People with Visual Impairment
- International Diabetes Federation
- National Federation of the Disabled Nepal
- Nepal Association for Welfare of the Blind
- Nepal Disabled Association
- Nepal Disabled Service Association
- Nepal Disabled Women Association

cont.....



- *The Nepal Disabled Women Association (NDWA) envisages empowered women with disabilities who are educated, socially secure, economically productive, are politically aware, and happily living with their family in a barrier free environment.*
- Nepal Disabled Women Society
- Nepal National Federation of the Deaf and Hard of Hearing
- People with Disability Nepal
- Rehabilitation International
- Sahara Griha
- Special Olympics, Int.
- United Nations Educational, Scientific, and Cultural Organization
- WHO Disability and Rehabilitation Programme
- World Blind Union
- World Federation for Mental Health
- World Federation of the Deaf



# Situation of persons with Intellectual Disabilities in Chitwan



**Education : teaching and learning institution under the control of government**

Type of Disability : Deaf ( less hearing)

School in operation : 3

Name Of School :

Number of Student

Boy      Girl      Total

1.Chitwan Higher Secondary School, Bharatpur chitwan

7      5      12

2.National Lower Secondary School Torikhet Chitwan

5      5      10

3. National Lower Secondary School Bajrahatti Chitwan

4      4      8



### **Type of Disability : slow minded**

School in operation : 3

Name Of School :

- 1.Narayani Higher Secondary School, Bharatpur chitwan
- 2.National Primari School Basyauli Chitwan
3. National Primary School Simrahani Chitwan

#### Number of Student

Boy	Girl	Total
6	7	13
7	4	11
5	4	9

### **Type of Disability : blind**

School in operation : 2

Name Of School :

- 1.Jhuwani Scondary School, Jhuwani chitwan
- 2.Narayani Higher Secondary Bharatpur Chitwan

#### Number of Student

Boy	Girl	Total
11	10	21
6	7	13



## **teaching and learning institution under the control of Private Sector (Special Education)**

### **Type of Disability : slow minded**

School in operation : 4

Name Of School :

1. Balkumari School, Bharatpur chitwan
2. Dhanauji School Dhanauji Chitwan
3. Tadi School Tadi Chitwan
4. Shreepur School Shreepur Chitwan

### Number of Student

Boy	Girl	Total
14	16	30
9	3	12
8	7	15
13	12	25

### **Disable Teacher and College Level Student in Chitwan( as much as received data)**

#### **Teacher**

- |                      |                 |
|----------------------|-----------------|
| 1. Balaram Marathha  | Secondary level |
| 2. Keshav Raj Poudel | „ „             |
| 3. Madhav Bhuttarai  | „ „             |



## Disable Student in Chitwan(Higher Class)

S.N.	Name of Student	Class
1.	Ramesh Chapagai	12
2.	Bikas Chapagai	MA
3.	BishnuMaya Dawadi	BA
4.	Surya Dawadi	BA
5.	MaitiDevi Harigan	11
6.	ChandraBati Poudel	MA
7.	RupaDevi Poudel	B .ED
8.	SamJana Ruwali	BA
9.	Bijaya Ghimire	11
10.	Puja Gautam	11
11.	Biddhiya Poudel	11
12.	Rama Chapagai	11

All of them are enjoyment scholarship on behalf of government.

# Suggestion



- Laws and policies related to the persons with disability reviewed and revisions made to eliminate discriminatory provisions contrary to human rights and empowerment.
- Roads, transportation, public places, government buildings, hospitals and schools will be made persons with disability-friendly to international standards by ensuring that all them are physically accessible to persons with disability.
- To empower persons with disability, institutional arrangements from the center to district levels.
- To strengthened the links, collaboration, cooperation and coordination among government agencies and NGOs .
- In all sector policies and programs, a policy of mainstreaming issued of rights, privileges and stakes should be focused.
- Reservation in the post of civil service, teacher, college, bank , company and all other government agency .

cont.....



- Special education program to be extended to access of persons with disability.
- Model resources and empowerment centers to be opened for persons with disability.
- To be conduct targeted programs for the empowerment of persons with disability.
- Special programs to be conduct for rehabilitation of persons with disability .
- Awareness about rights, privileges and needs of persons with disability to be raised and information flow to be made easily accessible.
- to collect the dis integrated data and documentation it.
- to strengthen the capacity of concern agency .
- to provide social respect and dignity.

I appreciate your queries





Thank you for your patience



# Elephant Polo



# Elephant Race



# Chepang dance



# One horn Rhino

