

ACTION PLAN

IMPROVEMENT OF CARE SERVICES FOR
CHILDREN WITH INTELLECTUAL
DISABILITIES AND MULTIPLE
DISABILITIES

Republic of Zambia

Ministry of Education

University Teaching Hospital Special School

PRESENTED BY
FRED M. MWALE

October 2003

Japan

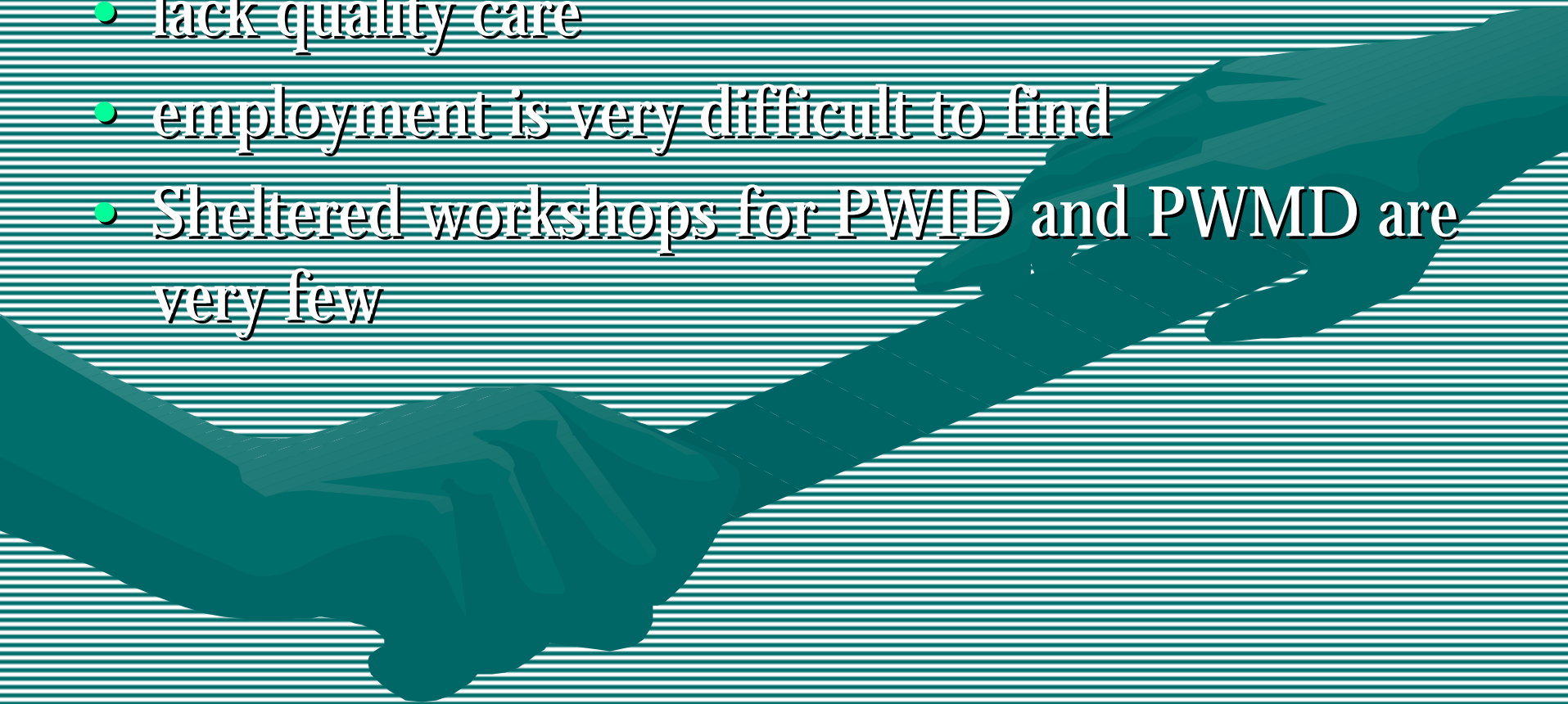
BACKGROUND

University teaching Hospital Special school was established in 1992. The school is located within the National hospital. It caters for the Intellectually Disabled, Physically Disabled, Multiply Disabled Emotionally Disturbed and Hearing Impaired. It has 6 Dept

NEEDS

Needs of Children

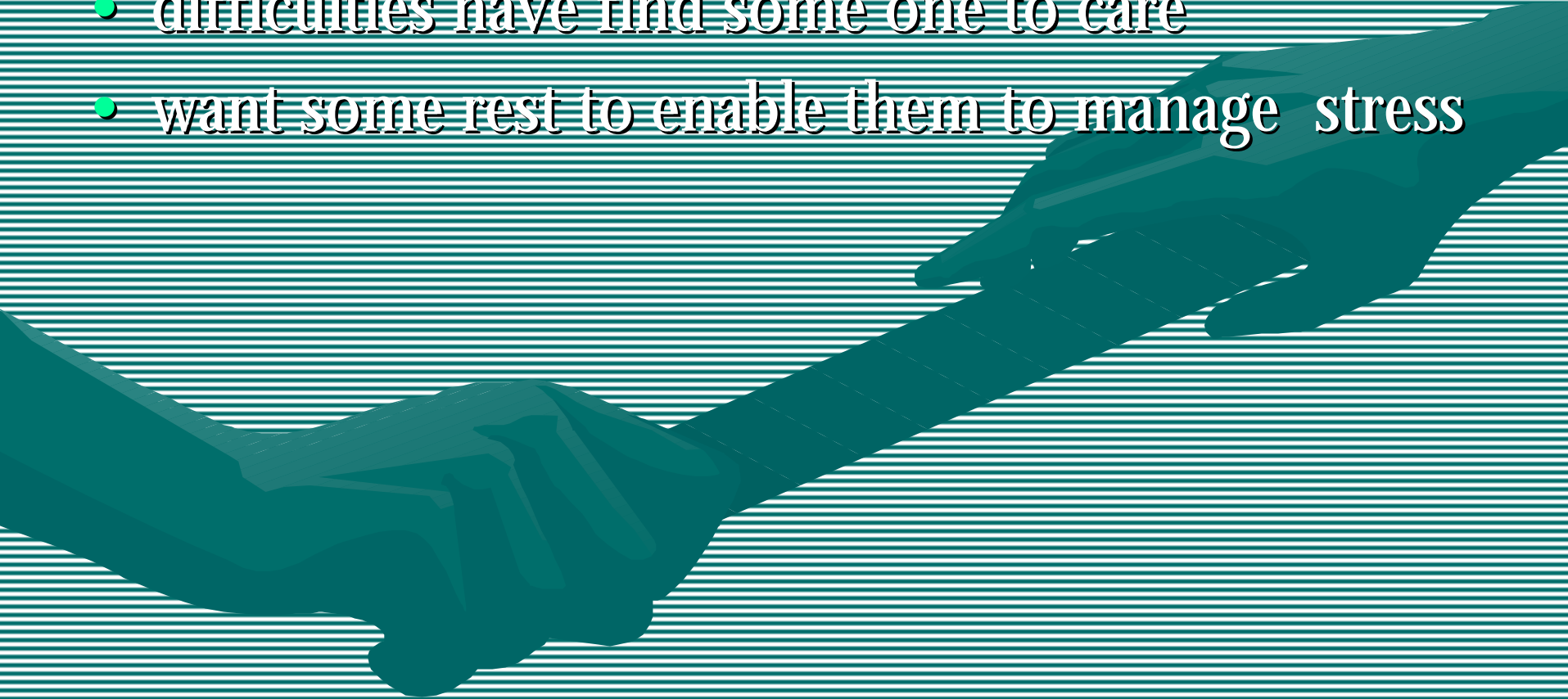
- lack quality care
- employment is very difficult to find
- Sheltered workshops for PWID and PWMD are very few



NEEDS

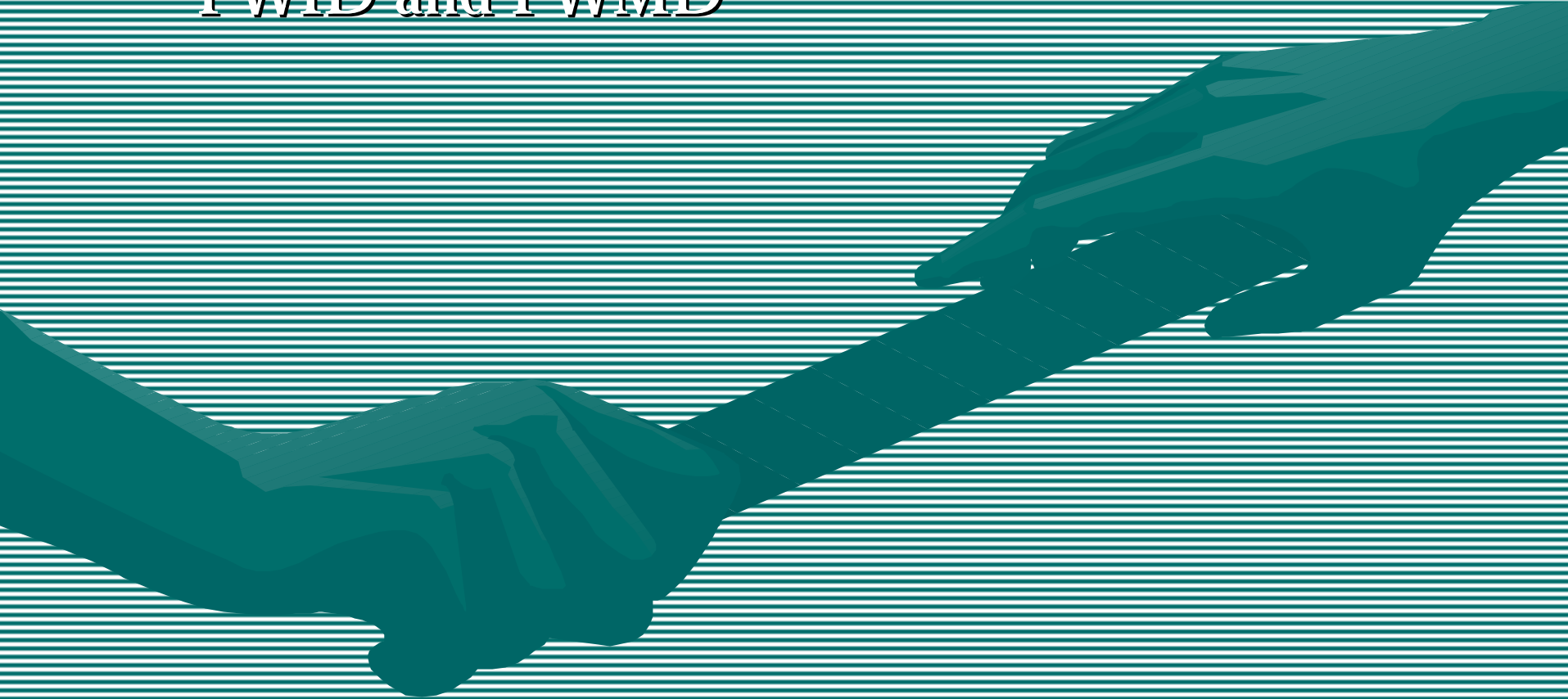
Needs of Parent

- difficulties have find some one to care
- want some rest to enable them to manage stress



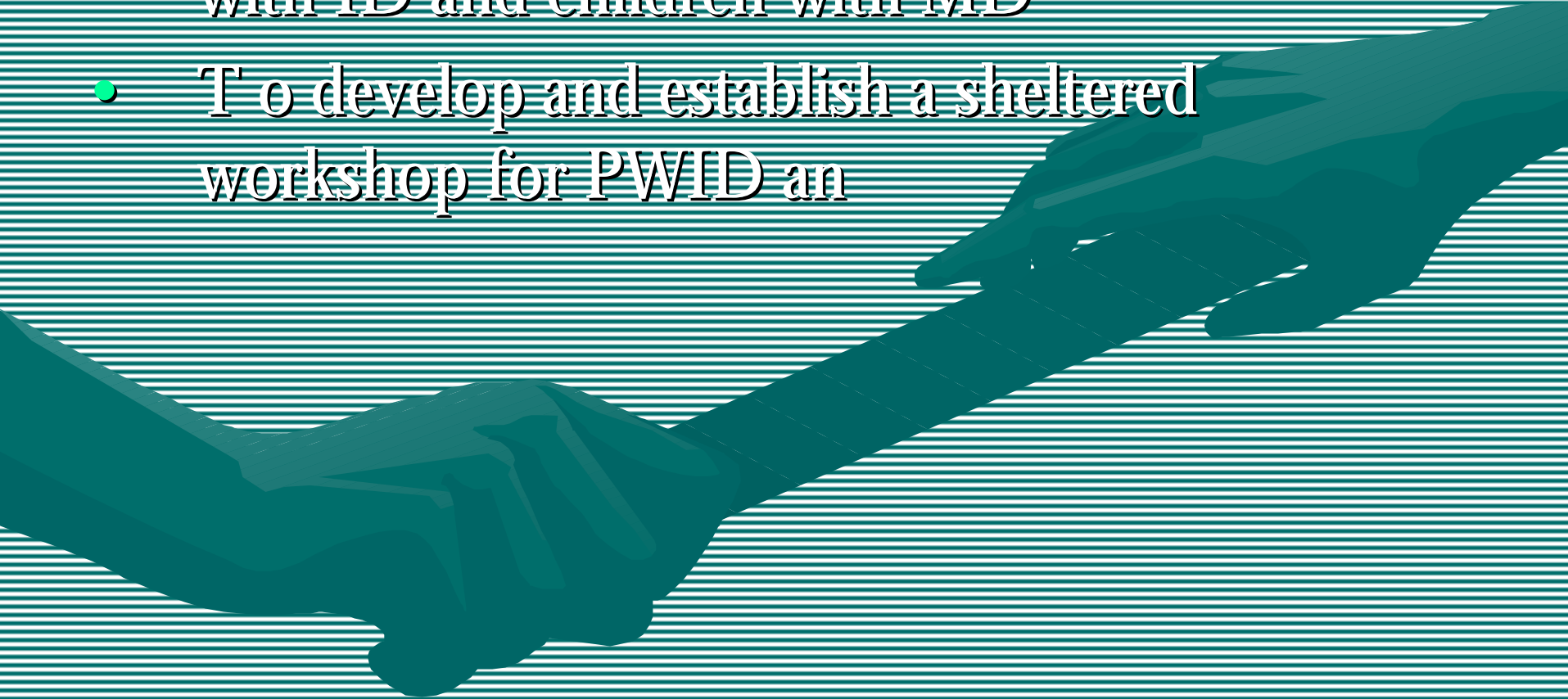
GOAL

- To improve the quality of care services for PWID and PWMD



OBJECTIVES

- To provide Respite care services for children with ID and children with MD
- To develop and establish a sheltered workshop for PWID an



METHOD

Description of Project

two strategic approaches to improve the QOL of PWID & PWMD

- Family support by providing Respite Care Service (RCS)
- Improvement of the QOL of PWID & PWMD by:
- -providing quality care management through the RCS
- -empowering them by providing employment through the sheltered workshop which is income generating with PWID & PWMD holding some shares

Period for setting the project:

- 2 years; Jan 2004-Dec 2005



Resources

- PTA of the school
- JICA volunteer expert for workshop & RCS.
- Collaborating organisations.
- Facilities for Workshop & RCS.
- Equipment for Workshop & RCS.
- Raw materials for workshop



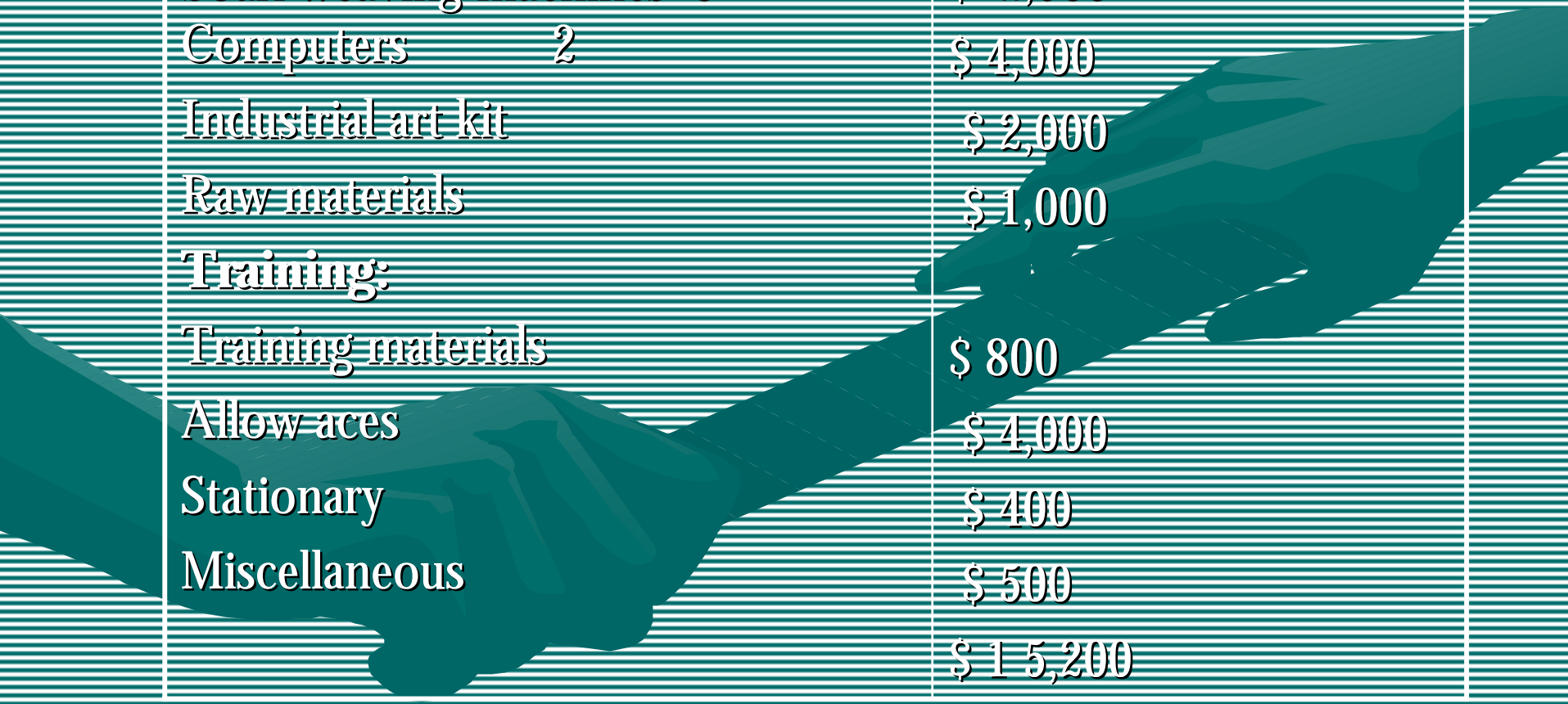
Sustainability

- The workshop & RCS projects will become self sustained when it becomes fully operational



BUDGET.

Tentative Budget



Equipment:	Cost
Soari weaving machines 3	\$ 2,500
Computers 2	\$ 4,000
Industrial art kit	\$ 2,000
Raw materials	\$ 1,000
Training:	
Training materials	\$ 800
Allow aces	\$ 4,000
Stationary	\$ 400
Miscellaneous	\$ 500
	\$ 15,200

MONITORING

- Monitoring will be done through analysis of monthly reports & inspection reports.



EVALUATION

- The success of the project will be measured by comparing the objectives with the objectively verifiable indicators.

