

# ACTION PLAN



**RECREATIONAL OPPORTUNITIES FOR CHILDREN  
WITH INTELLECTUAL DISABILITIES INTEGRATED  
WITH NON DISABLED CHILDREN.**



Presented by: Zoya Crandon August 06 2010

## BACKGROUND OF THE PROGRAM

- ❖ **Guyana located in south America**
- ❖ **Guyana has an area of 214,969 sq km (83,000 sq mi), about the size of Idaho.**
- ❖ **The estimated population is over 751000. New Amsterdam is situated at the east bank and at the mouth of the Berbice River, and is the capital city of East Berbice Corentyne region.**
- ❖ **New Amsterdam has a population of 35,039 and it is the main port for exporting bauxite.**
- ❖ **Economic activities consist of agriculture, aquaculture, industries and commerce.**

## **Background cont**

- ❖ One public hospital and one public psychiatric hospital**
- ❖ Several banks and business places, one market, several supermarkets.**
- ❖ In addition there are 9 secondary schools, 17 primary, 25 nursery schools.**

# **Background cont.**

**Major area of concern that prevents social integration among CWID in New Amsterdam are as follows:**

- ❖ Negative attitudes or behaviors as a result of their disability.**
- ❖ Most household in New Amsterdam consist of single parent families.**
- ❖ family income then creates difficulties meeting additional costs of disability**
- ❖ Main care givers faces stress, anxiety and additional financial concerns.**
- ❖ Unable to develop peer group or opportunity for casual social interaction with peers.**

# **Background cont.**

**❖ Social participation often occurs within a limited context of family .**

**❖ Children's source of fun and leisure activity is at the schools.**

**❖ No other institution clubs or group offers leisure for children with intellectual disability.**

**❖ Children with Id are left alone at home with other siblings while parent works.**

**Target area:** New Amsterdam



**Target population:** children with and without intellectual disability (35 children )15 non-disabled,20 ID

**Period:** 3yrs

# **Long term goal**

**❖ To have an integrated society in New Amsterdam**

## **Short term goal**

**❖ To foster social integration that will leads to independence among children with and without disability.**

# Strategy



**FORMULATE CHILDREN'S CLUB**



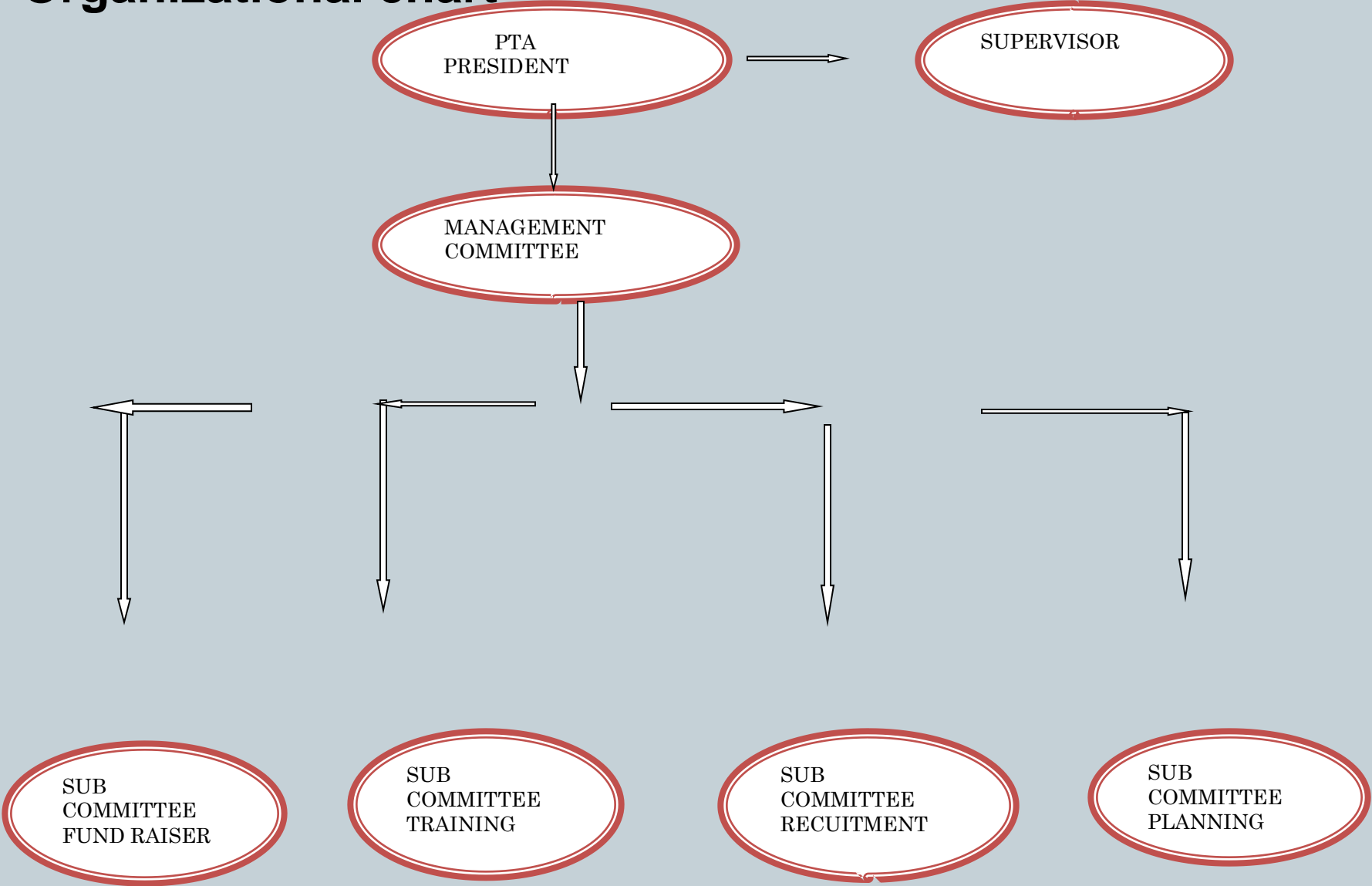
# Activities

❖ Discuss project outline with the NASNS PTA committee

❖ Train Volunteer

❖ Design Program for club

# Organizational chart



## TENTATIVE SCHEDULE OF ACTIVITIES

Strategy	To formulate children's club	Month	Killer Assumption
Activity Outline project	<ul style="list-style-type: none"> <li>❖ Discussion with parent- teacher Association.</li> <li>❖ Forming a management committee.</li> <li>❖ Consult with other interest group.</li> </ul>	9 10 11	
Activity Train volunteer	<ul style="list-style-type: none"> <li>❖ Advertise- for volunteer.</li> <li>❖ Schedule interview for prospective volunteer.</li> <li>❖ Make selection of volunteers</li> <li>❖ Prepare materials.</li> <li>❖ Train volunteers.</li> </ul>	9 10  10 11 11	
	<ul style="list-style-type: none"> <li>❖ Solicit donation from business .</li> <li>❖ Fund raising activities</li> </ul>	12 11-12	Businesses will not give donations, however to overcome this the group will conduct their own fundraisers in order to access equipment. Also Buy smaller materials first.

		m on th	Killer assumption
Activity (3 Design program of children club	<ul style="list-style-type: none"> <li>❖ Advertise for children.</li> <li>❖ Enroll and orientate children.</li> <li>❖ Launching children's club in New Amsterdam.</li> <li>❖ Allocate group leaders to supervise children according to needs.</li> <li>❖ Instigating and motivating children to participate in activities.</li> </ul>	01 01 02  02-  02-	Parents will not send their children to the club, however to overcome this assumption the club will start with the CWID and their sibling from the NASNS..
Organisati on in charge	NASNS PTA and Management committee.		
Budget .	\$500,000 GY dollars.		

# Monitoring

To monitor this project the committee will meet twice every month to report the progress.

.

# Documentation

Documentation will be done by:

**Volunteers-** will document daily schedule changes that occur during the activities.

**Management committee-** will document the structure of the club, challenges gains (benefits)

# **Evaluation**

- ❖ Both children with and without disability
- ❖ Volunteers

## **What is to be measured**

- ❖ The effectiveness of the project
- The level at which the children was and is functioning.

# Tools to be used

- ❖ Pre and post test.
- ❖ Interview schedule
- ❖ KJ methods

# Special thanks

- JICA TEAM