

INTELLECTUAL & DEVELOPMENTAL DISABILITIES IN COMMUNITY ACTIVITIES

ACTION PLAN - 2017



S.P.S.R. VICTOR.
DISTRICT SOCIAL SERVICE OFFICER
DEPARTMENT OF SOCIAL SERVICES
SRI LANKA

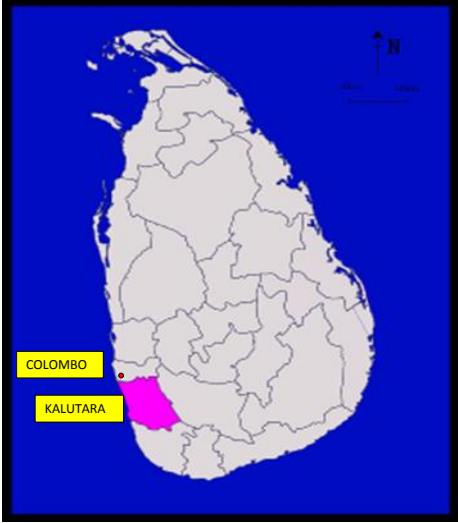


EMPLOYMENT OPPORTUNITIES FOR PWID_s



BACKGROUND

KALUTARA DISTRICT



BACKGROUND CONT'D

DIVISIONAL SECRETARIETS IN KALUTARA DISTRICT



BACK GROUND CONT'D

SITUATION OF THE DISTRICT

NO	DISCRIPTION	AMOUNT
01	POPULATION	1121949
02	AREA (KM ²)	1607
03	POPULATION DENSITY (KM ²)	771
04	NO. OF DIVISIONAL SECRETARIETS	14
05	NO. OF GRAMA NILADHARI DIVISIONS	762
06	VILLAGES	2514
07	GOVERNMENT HOSPITALS	21
08	PRIVATE HOSPITALS	05
09	SCHOOLS	403
10	SPECIAL NEED SCHOOLS	02
11	SUPPORT ORGANIZATIONS	09
12	NO OF PWDs	97118
13	NO OF PWIDs	2205

BACK GROUND CONT'D

- Total population in Kalutara district - 1,121,949.
- PWD population 97118 (8%)
- PWID population 2205
- Government Assistance:- livelihood assistance, housing assistance , self employment assistance, health facilities, education support, and assistive devices.
- Opportunity to inclusive and special need education and vocational training.
- CBR program is formulated in every division and 20 social service officers are manipulating the program in division level. This program is directed by the department of social services.
- Self-help groups are formulated in every division, and also its district level organization.
- Social service officers are well-trained and they have a good experience.
- Though PWIDs got vocational training, most of them are not working. Because of their parents or guardians do not wants to get them a job or self employment. Because they are afraid to let them go far by using public transportation system. Also they do not have success experience.

BACK GROUND CONT'D

- Low concerned with PWD & PWID :-
 1. Protection of the rights of PWD & PWIDs.
 2. National policy on disability for Sri Lanka.
 3. Public Administration circular for 3% of job opportunities for PWDs.
 4. Legal aid commission.
- No any special program related to PWIDs
- No established employment system for PWIDs.
- Most of PWIDs are from poor families.
- Lack of funds.
- In villages there so many small scale industries and small scale business premises like super markets, hotels, reception halls.
- NGOs also working with PWDs and PWIDs.

PERIOD OF THE PROJECT

01.06.2017 TO 31.12.2020

SHORT TERM PERIOD :- From 01.06.2017 to 31.12.2020

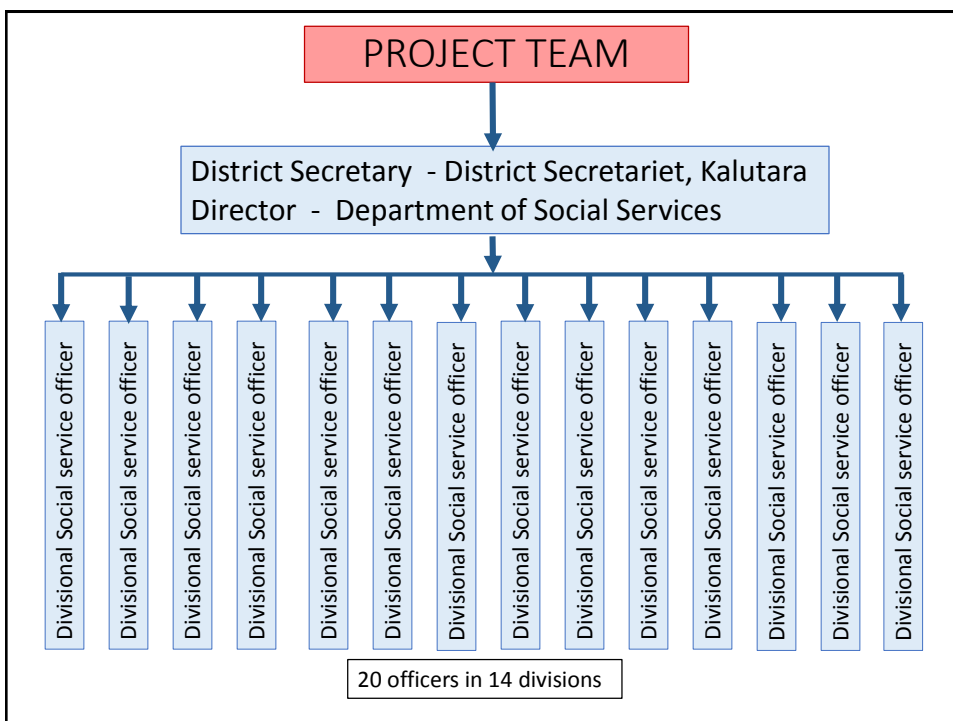
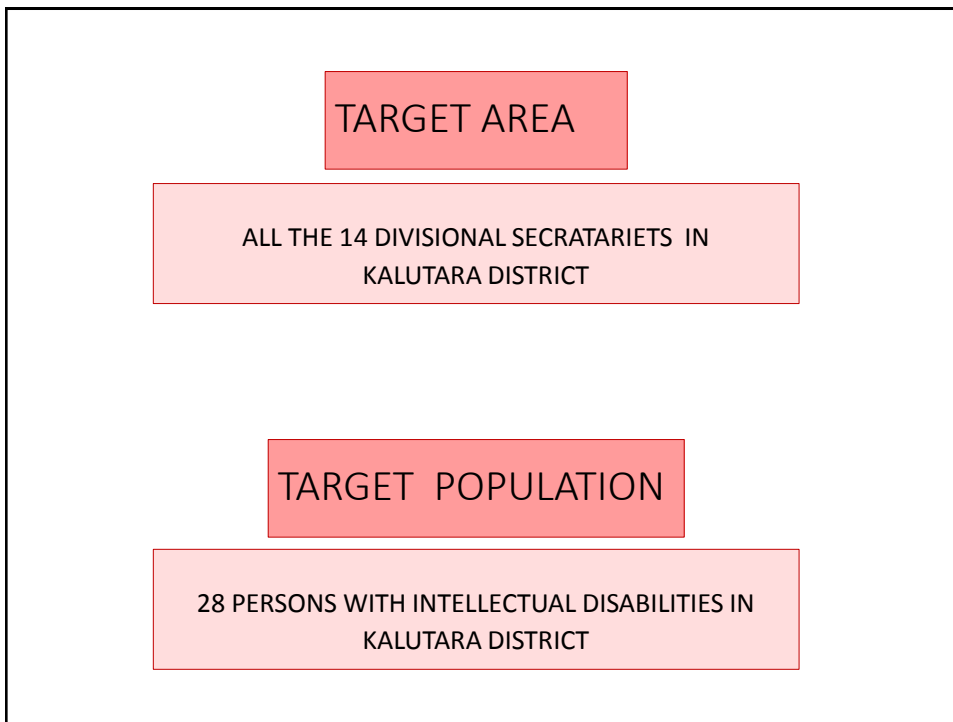
LONG TERM PERIOD :- From 01.06.2017 to 31.12.2030

LONG TERM OBJECTIVE

75% PWID IN KALUTARA DISTRICT IS A EMPLOYEE IN 2030

SHORT TERM OBJECTIVE

28 PWIDS who are selected from 2 by each 14 divisions get job opportunity in 2020



STRATEGY

JOB PLACEMENT OF 28 PWIDs (02 PWID in each division)

Activity 01 :-

Activity	Two days awareness program about the project to the 20 social service officers in 14 divisions.
Time line	01.06.2017 – 30.06.2017
Person in charge	Director of social services, District secretary, District social service officer
Budget	175 \$
Killer Assumption	Lack of funds
Way to solve	By NGO support

Activity 02 :-

Activity	Select 28 PWIDs – 02 PWID from each division
Time line	01.07.2017 - 31.08.2017
Person in charge	Divisional Secretaries, Social service officers
Budget	25 \$
Killer Assumption	Parents will not allow PWIDs to get a job.
Way to solve	Awareness them

Activity 03 :-

Activity	One day program with community to Find places which can get job opportunities – 14 programs
Time line	01.09.2017 - 31.12.2017
Person in charge	Divisional secretary, District social service officer and Social service officers
Budget	1200 \$
Killer Assumption	They do not have experience working with PWIDs. It may cause to refuse
Way to solve	Awareness them

Activity 04 :-

Activity	Discussion with job owners
Time line	01.01.2018 - 31.01.2018
Person in charge	District secretary, District social service officer and Social service officers
Budget	100 \$
Killer Assumption	They will may be confuse to how to deal with PWIDs.
Way to solve	Awareness them

Activity 05 :-

Activity	Job placement
Time line	01.02.2017 - 31.05.2017
Person in charge	Divisional secretaries, District social service officer and Social service officers.
Budget	0
Killer Assumption	After few times employee, as well as employer may be refuse.
Way to solve	Involve to the problem and find a better way.

TOTAL BUDGET

ACTIVITY		AMOUNT
Activity 01	Two days awareness program about the project to the 20 social service officers in 14 divisions.	175 \$
Activity 02	Select 28 PWIDs – 02 PWID from each division	25 \$
Activity 03	One day program with community to Find places which can get job opportunities – 14 programs	1200 \$
Activity 04	Discussion with job owners	100 \$
Activity 05	Job placement	0
Total amount		1500 \$

MONITORING

Monitoring by :-

1. District secretary
 2. District social service officer
- } In district level
3. Divisional secretaries
 4. Social service officers
- } In divisional level

Monitoring Methods :-

1. Follow up by Social service officers :-
 - In first two years – once a month
 - After two years – By quatar
2. Field observations
3. Progress meetings with officers, parents, and employers

EVALUATION

1. No. of PWID employees
2. Before and after design.

Evaluation will be done by :-

1. Divisional secretaries
2. District social service officer
3. Social service officers.

DOCUMENTATION

- Updated data on PWID
- Activity schedules
- List of support organizations
- Maps
- Fomats
- Progress reports.

THANK YOU