



# Start to work for PWIDs

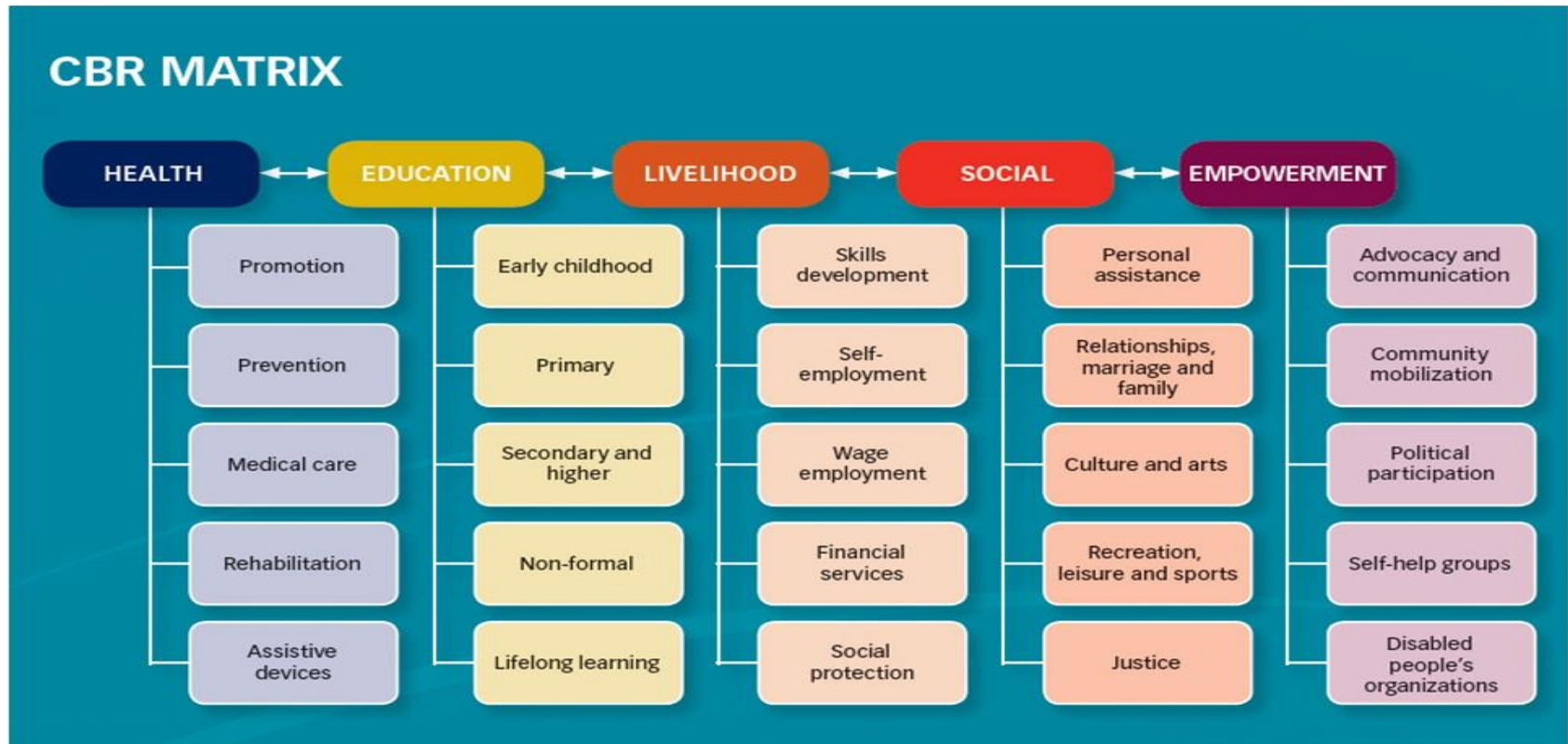
Prepared by Angella Naru Farobo  
**Solomon Islands**

# Background

- Solomon Islands has the total population of 667,044 and consisted of nine (9) Provinces and one of the Province is Guadalcanal.
- In Guadalcanal Province the total population is 144,592 and it consists of 8 constituencies. From constituencies we have 35 wards which the population for each is 500 to 1000 people.
- Within Guadalcanal I already registered 200 PWDs and identified 10 PWIDs with multiple disabilities but no data of PWIDs without physical disabilities.

# Cont Background

- Guadalcanal has 2 Vocational Training centres which was run by church groups.
- In Solomon Islands we have 2 DPOs and 1 special education located in the city.
- CBR in Solomon Islands we focus mainly on the CBR Matrix



## Cont. Background

- CBR work for only Person with Physical Disabilities, aged and small children and not working for PWIDs.
- No education for CWDs and CWIDs.
- In Solomon Islands the UNCRPD was already Signed but not yet ratified.

# Long term goal

- By 2030
- Children with physical and Intellectual and also person with intellectual disabilities were included in the society.

# Short term goal

- By 2020
- Education will be conducted for 10 children with physical and Intellectual disabilities.
- There will be 20 PWIDs becomes farmer.

# Target Area

- In Guadalcanal Province

(3 wards which is total population of 12,000 in 1 constituency)

# Target Population

- CWDs, CWIDs and PWIDs  
(10 child with multiple or physical disabilities and 20 PWIDs)



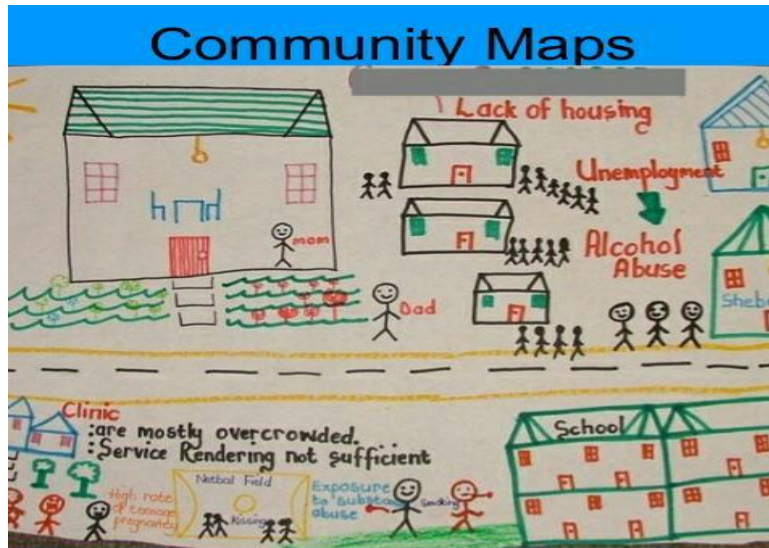
# Project Period

- July 2018 to August 2020

# Strategy 1: Survey

## Activities

1. Conduct PLA (social map) with children and youths to find children with physical, intellectual disabilities and person with intellectual disabilities.



2. Make assessment to find 10 children with physical and intellectual disabilities and 20 PWIDs.

## **Strategy 2: Train 20 PWIDs as farmer**

### **Activities**

1. Train the parents of the PWIDs on how to train their PWID on how to help with them in their farm
2. Educate family member on the abilities of the PWIDs. Train them to involve him to help out in the farm.

# **Strategy 3: Education for children with physical and intellectual disabilities**

## **Activities**

- Educate youths to become a teacher.
- Negotiate with church committee to use their facility for the children.
- Conduct a class at the community church hall for 2 days in a week.

# Budget (Resource)

- **Conduct Survey**

  - Stationeries USD \$200

  - Transportations USD \$500

- **Organizing Community activities (school) and family training**

  - Transportation USD \$500

# Responsible Org/ Person

- Guadalcanal Provincial Health Services, CBR Division.
- CBR field officers, Parents, Family members, Volunteers, Village children and youths.



# Risks and Solutions

- |  |   |
|--|---|
| <ul style="list-style-type: none"><li>• Family member will be reluctant to train the PWIDs</li><li>• Parents will not performed according to the activity demonstrated and accordingly.</li><li>• Volunteers don't know about disability and how to teach the PWIDs.</li></ul> | <ul style="list-style-type: none"><li>• Explain their abilities to family members and train with them.</li><li>• Do Training with the PWIDs and their family members.</li><li>• Send them to train from the Special Education Centre in the city to equipped with limited knowledge</li></ul> |
|--|---|



# Monitoring

- CBR Field Officers to visited the communities to check on the volunteers, parents and family members once every 3 months.

# Evaluation

Before and After Method

## Indicators

1. Number of children with physical and intellectual disabilities which were attending in Education.
2. Number of PWIDs which are working in the farm with family members.
3. Create Data for PWIDs.

# Documentation

- Make a checklist record book and Table.
- In every visit record all the assessments of the community and plan for next visit.
- Hand in logical report at end of every month to the International CBR Coordinator, Provincial Director of health services and to the CBR Provincial Coordinator.

Thank you very much...

